

**INSTRUMENT APPROACH  
CHART (IAC)**

**CAMPINAS / Viracopos, INTL (SBKP)**

**AD ELEV: 2170'**

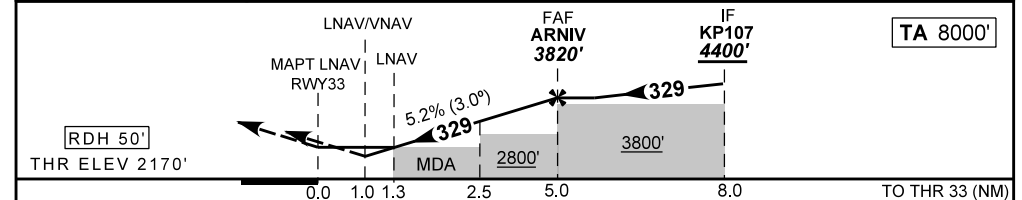
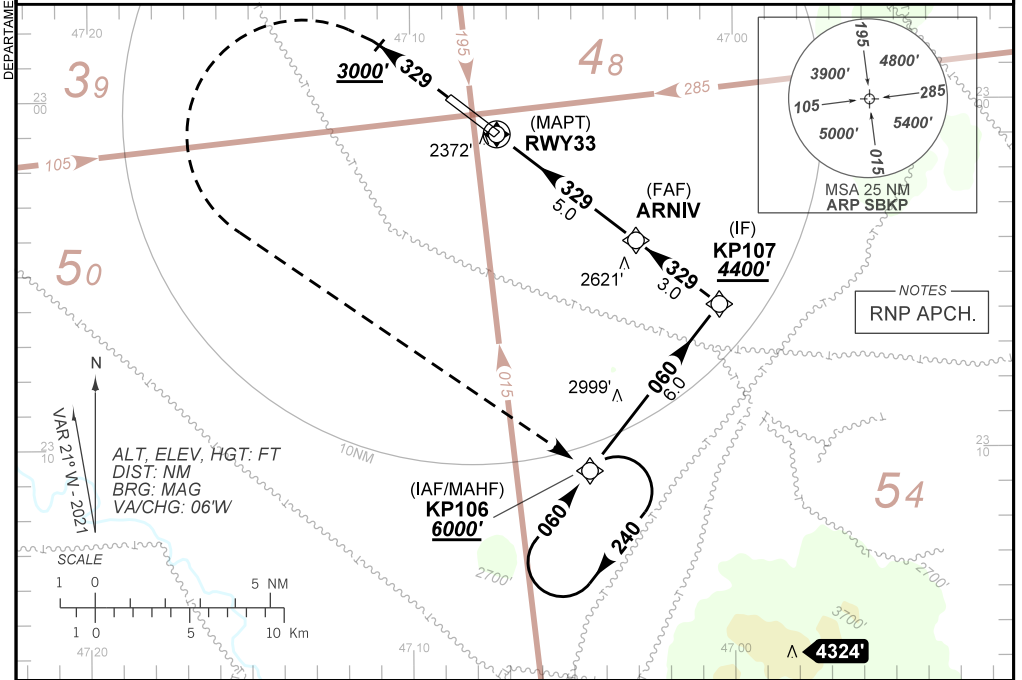
**RNP X RWY 33**

D-ATIS <b>127.825</b>	APP SÃO PAULO <b>119.05 119.15 119.25 119.60 119.80 120.05 120.25 120.85 121.40 122.75 123.25 124.15</b>	TWR CAMPINAS <b>118.25</b>	GNDC CAMPINAS <b>121.90</b>
--------------------------	---	-------------------------------	--------------------------------

TEMP LNAV / VNAV <b>MIN -10° C/MAX 50° C</b>	FINAL CRS <b>329°</b>	FAF: <b>3820'</b>	LNAV / VNAV DA / (OCH): <b>2533' / (363')</b>	LNAV MDA / (OCH): <b>2620' / (450')</b>
---	--------------------------	----------------------	--	--

APCH Perdida: Subir para **6000'**. Manter rumo **329** até cruzar **3000'**. Após, curvar à ESQUERDA direto KP106 para espera.  
Missed APCH: Climb to **6000'**. Maintain course **329** until passing **3000'**. After, turn LEFT direct to KP106 for holding.

RMK: NIL.



RWY33	1.0	1.3	2.5	3.0	4.0	ARNIV	Ground Speed (KT)	090	110	130	150	170	190
ALT	2533	2620	3016	3175	3494	3820	FPM	500	600	700	800	900	1050
(HGT)	363	450	846	1005	1324	1642	FAF-MAPT	NA					

STRAIGHT-IN	CAT	A	B	C	D	E	
	DA / (OCH)	2533' / (363')					NA
LNAV/VNAV	ALS/NO ALS/ RVR ALS (m)	NIL / 1700 / NIL					
	MDA / (OCH)	2620' / (450')					
LNAV	ALS/NO ALS/ RVR ALS (m)	NIL / 1700 / NIL			NIL / 2100 / NIL		
	MDA / (OCH)	NA					
CIRCLING	MDA / (OCH)	NA					
	VIS (m)	NA					

CHANGES: D-ATIS:

DEPARTAMENTO DE CONTROLE DO ESPAÇO AÉREO