

INSTRUMENT APPROACH
CHART (IAC)

CABO FRIO / Cabo Frio (SBCB)

AD ELEV: 23'

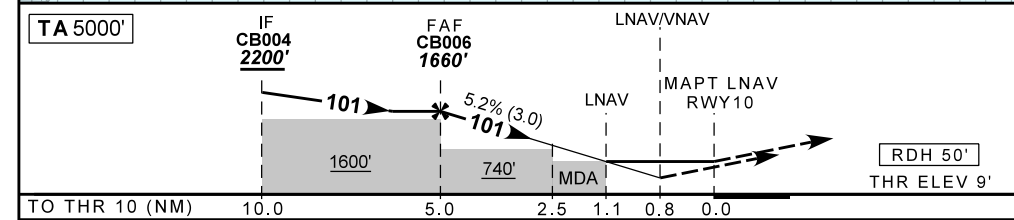
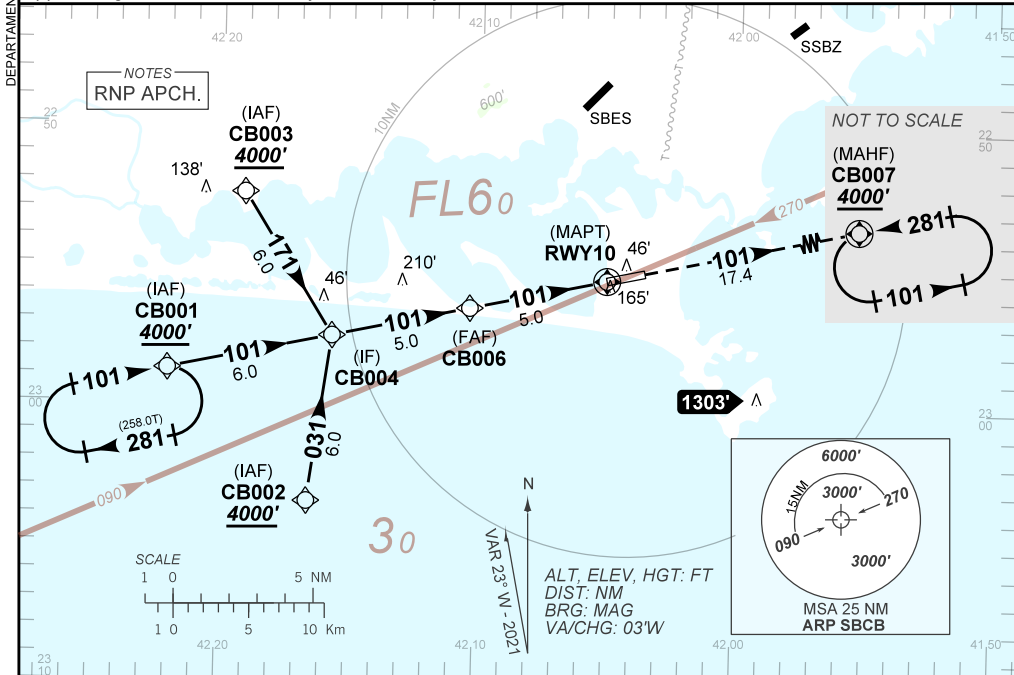
RNP Z RWY 10

D-ATIS NIL	APP ALDEIA 119.45 120.30	AFIS CABO FRIO 132.15	GNDC NIL
---------------	-----------------------------	--------------------------	-------------

TEMP LNAV/VNAV MIN 0° MAX 46°	FINAL CRS 101°	FAF: 1660'	LNAV/VNAV DA / (OCH): 326' / (317')	LNAV MDA / (OCH): 420' / (411')
----------------------------------	-------------------	---------------	--	------------------------------------

APCH Perdida: Subir para **4000'**, gradiente MNM 4%. Manter rumo **101** até CB007 para espera.
Missed APCH: Climb to **4000'** MNM gradient 4%. Mantain course **101** until CB007 for holding.

RMK: 1) Gradiente de 2.5% livra obstáculos, entretanto necessário gradiente de 4% para chegar a 4000 pés no MAHF. Para APCH Perdida com gradiente abaixo de 4%, autorização do APP Aldeia requerida.
2.5% gradient possible by obstacle clearance, but 4% reaches 4000 feet holding altitude at MAHF. Missed approach gradient below 4% only authorized by APP Aldeia.



TO THR 10 (NM)	10.0	5.0	2.5	1.1	0.8	0.0
	CB004	4.0	3.0	2.0	1.1	RWY10
	1660	1333	1015	696	420	ALT
	1651	1324	1006	687	411	(HGT)

STRAIGHT-IN	CAT	A	B	C	D	E
	DA / (OCH)	326' / (317')				
LNAV/VNAV	ALS/NO ALS/ RVR ALS (m)	800 / 1400 / NIL				
	MDA / (OCH)	420' / (411')				
LNAV	ALS/NO ALS/ RVR ALS (m)	800 / 1600 / NIL		1200 / 1900 / NIL		
	MDA / (OCH)	NA				
CIRCLING	MDA / (OCH)	NA				
	VIS (m)	NA				

AIRAC AMDT 2101A1 28 JAN 21

SBCB_IAC_00D 1/1
IAC RNP Z RWY 10

CHANGES: DEC. FREQ. IDENT. LAYOUT.

DEPARTAMENTO DE CONTROLE DO ESPAÇO AÉREO