

**INSTRUMENT APPROACH
CHART (IAC)**

CALDAS NOVAS / Caldas Novas (SBCN)

AD ELEV: 2307'

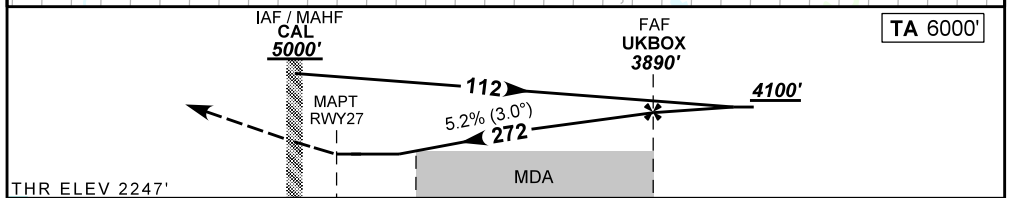
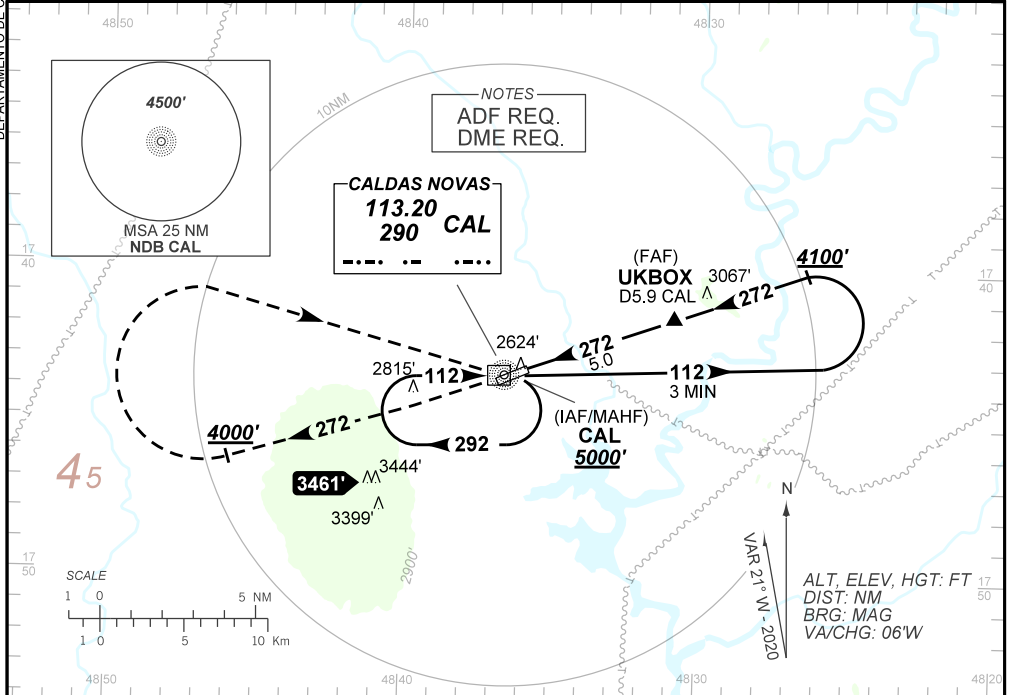
NDB Z RWY 27

ATIS NIL	APP NIL	AFIS CALDAS 130.05	GNDC NIL
-------------	------------	-----------------------	-------------

NDB CAL 290 kHz	FINAL CRS 272°	FAF: 3890'	N/A	NDB MDA / (OCH): 3050' / (810')
--------------------	-------------------	---------------	-----	------------------------------------

APCH Perdida: Subir para **5000'**. Manter QDR **272** do NDB CAL até **4000'**. Após, curvar à DIREITA direto NDB CAL para espera.
Missed APCH: Climb to **5000'**. Maintain **272** QDR CAL NDB until **4000'**. After, turn RIGHT direct to CAL NDB for holding.

DEPARTAMENTO DE CONTROLE DO ESPAÇO AEREO



0.0	0.9	2.4	3.3	5.0	5.9	TO THR 27 (NM)	TO CAL (DME)
-----	-----	-----	-----	-----	-----	----------------	--------------

RWY27	2.4	3.0	4.0	UKBOX		Ground Speed (KT)	090	110	130	150	170	190
ALT	3050	3252	3571	3890		FPM	500	600	700	800	900	NA
(HGT)	810	1005	1324	1643		FAF-MAPT	NA					

STRAIGHT-IN	CAT	A	B	C	D	E
NDB	MDA / (OCH)	3050' / (810')				
	ALS/NO ALS/ RVR ALS (m)	NIL / 1600 / NIL	NIL / 2000 / NIL	NIL / 3800 / NIL		
CIRCLING	MDA / (OCH)	3110' / (810')			NA	
	VIS (m)	1600	2000			

CHANGES: LAYOUT, THR ELEV.