

**INSTRUMENT APPROACH CHART (IAC)** **GUARANTÁ DO NORTE / Campo de Provas Brig. Veloso (CPBV), MIL (SBCC)**

**AD ELEV: 1777'**

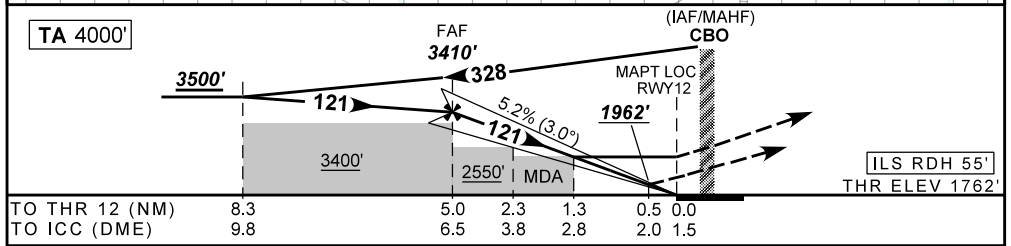
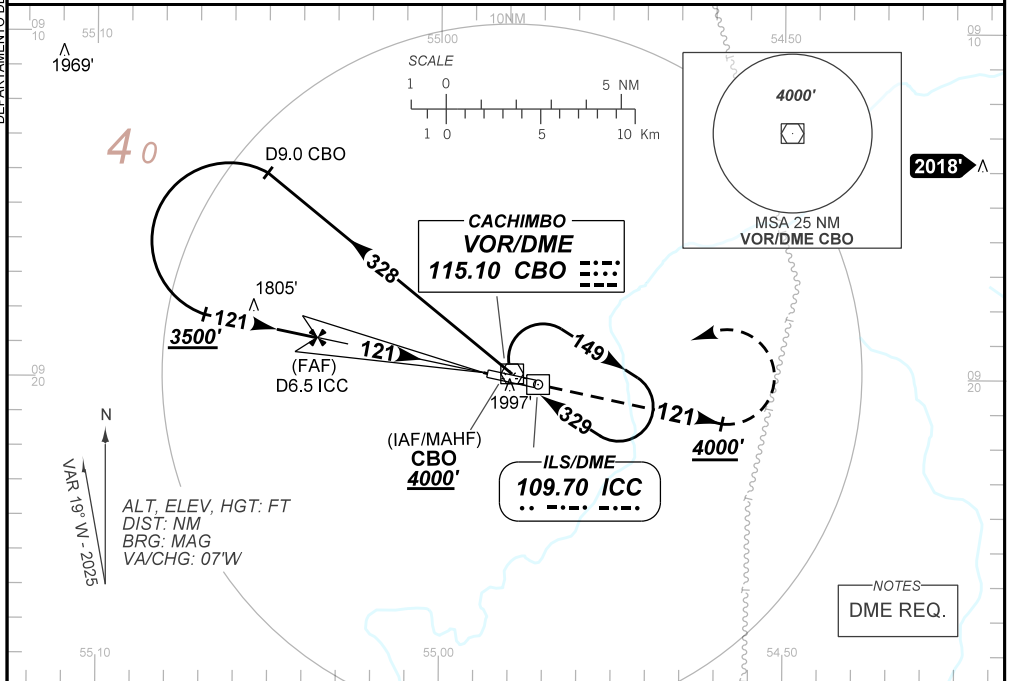
**ILS Z or LOC Z RWY 12**

ATIS <b>NIL</b>	APP <b>NIL</b>	AFIS CACHIMBO <b>125.90</b>	TWR <b>NIL</b>	GNDC <b>NIL</b>
ILS/DME ICC <b>109.70 MHz</b>	FINAL CRS <b>121°</b>	FAF: <b>3410'</b>	CAT I DA / (OCH): <b>1962' / (200')</b>	LOC MDA / (OCH): <b>2220' / (460')</b>

APCH Perdida: Subir para **4000'**, proa **121**. Após, curvar à ESQUERDA direto VOR CBO para espera.

Missed APCH: Climb to **4000'**, heading **121**. After, turn LEFT direct CBO VOR for holding.

DEPARTAMENTO DE CONTROLE DO ESPAÇO AÉREO



TO THR 12 (NM)	8.3	5.0	2.3	1.3	0.5	0.0
TO ICC (DME)	9.8	6.5	3.8	2.8	2.0	1.5

	FAF	4.0	3.0	2.3	1.3	RWY 12	Ground Speed (KT)	090	110	130	150	170	190
		3410	3091	2772	2550	2220	FPM	500	600	700	800	900	N/A
		1648	1329	1010	788	460	FAF-MAPT	NA					

STRAIGHT-IN	CAT	A	B	C	D	E
CAT I	DA / (OCH)	1962' / (200')				NA
	ALS/NO ALS/ RVR ALS (m)	NIL / 1200 / NIL				
LOC	MDA / (OCH)	2220' / (460')				
	ALS/NO ALS/ RVR ALS (m)	NIL / 1600 / NIL		NIL / 2100 / NIL		
CIRCLING	MDA / (OCH)	NA				
	VIS (m)	NA				

CHANGES: PROC. VAR.