

**INSTRUMENT APPROACH  
CHART (IAC)**

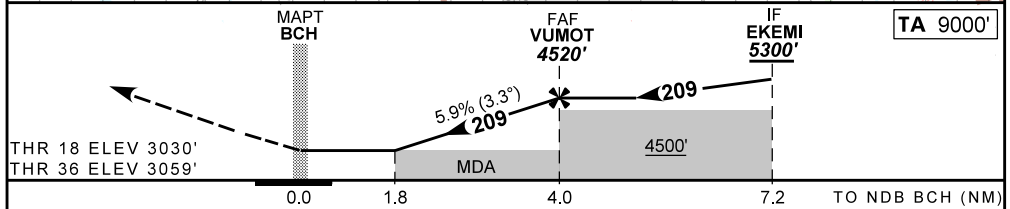
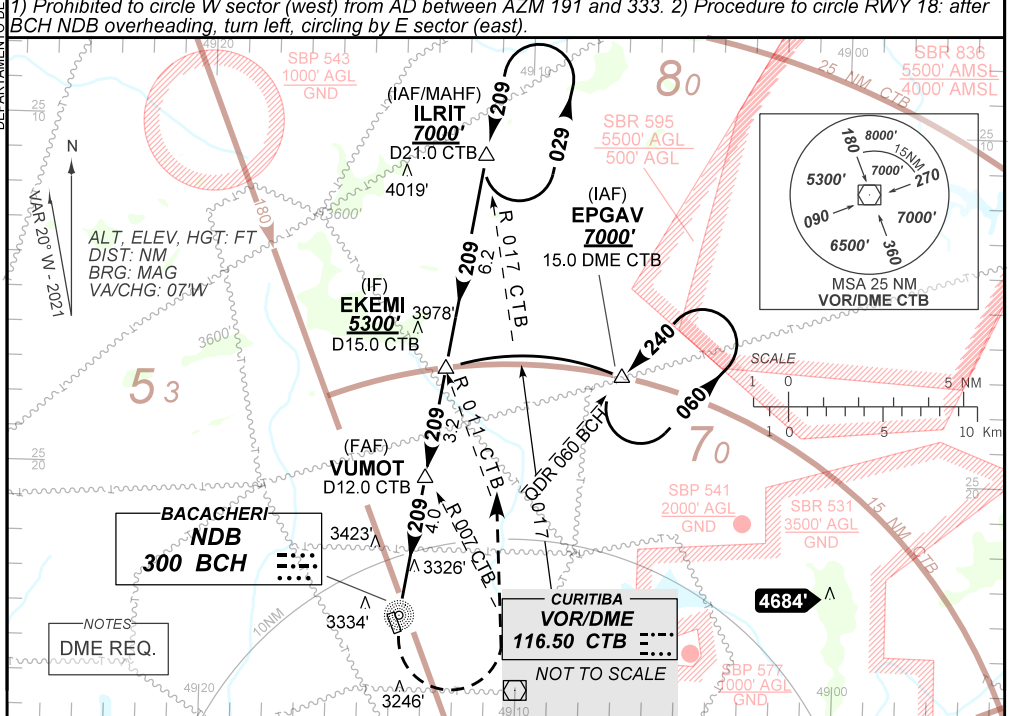
**CURITIBA / Bacacheri (SBBJ)  
NDB B RWY 18/36  
CAT(A,B)**

**AD ELEV: 3059'**

<b>ATIS</b> 132.325	<b>APP CURITIBA</b> 119.95 120.65 120.95 129.55 133.15	<b>TWR BACACHERI</b> 118.90	<b>AFIS BACACHERI</b> 118.90 119.95	<b>GNDC BACACHERI</b> 121.80
<b>NDB BCH</b> 300 KHz	<b>FINAL CRS</b> 209°	<b>FAF:</b> 4520'	<b>N/A</b>	<b>N/A</b>

APCH Perdida: Subir para **7000'** curvando à **ESQUERDA** para interceptar a RDL **016** VOR CTB até ILRIT para espera.  
Missed APCH: Climb to **7000'**, turn **LEFT** to intercept **016** RDL CTB VOR until ILRIT for holding.

RMK: 1) Proibido circular setor W (oeste) do AD entre os AZM 191 e 333. 2) Procedimento para circular RWY 18: após bloqueio do NDB BCH, curvar à esquerda, circular pelo setor E (leste).  
1) Prohibited to circle W sector (west) from AD between AZM 191 and 333. 2) Procedure to circle RWY 18: after BCH NDB overheading, turn left, circling by E sector (east).



MAPT	1.8	2.0	3.0	VUMOT		Ground Speed (KT)	090	110	130	150	170	190
ALT	3720	3810	4160	4520		FPM	550	650	800	900	NA	NA
(HGT)	670	751	1101	1461		FAF-MAPT	NA					

STRAIGHT-IN	CAT	A	B	C	D	E
NDB	MDA / (OCH)					
	ALS/NO ALS/ RVR ALS (m)			NA		
CIRCLING	MDA / (OCH)	3650' / (600')	3720' / (670')			NA
	VIS (m)	1600	1600			

DEPARTAMENTO DE CONTROLE DO ESPAÇO AÉREO

CHANGES: EAC.