

**INSTRUMENT APPROACH
CHART (IAC)**

PRESIDENTE PRUDENTE / Presidente Prudente (SBDN)

AD ELEV: 1483'

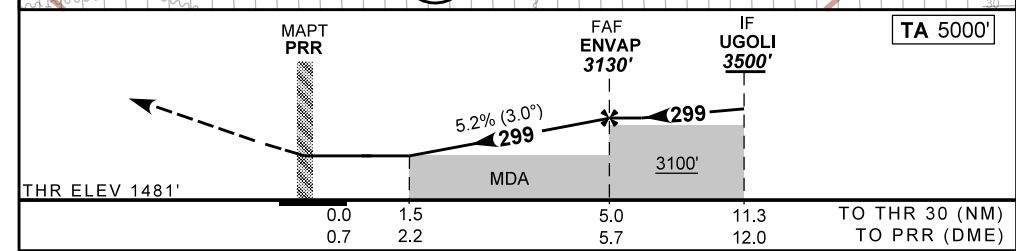
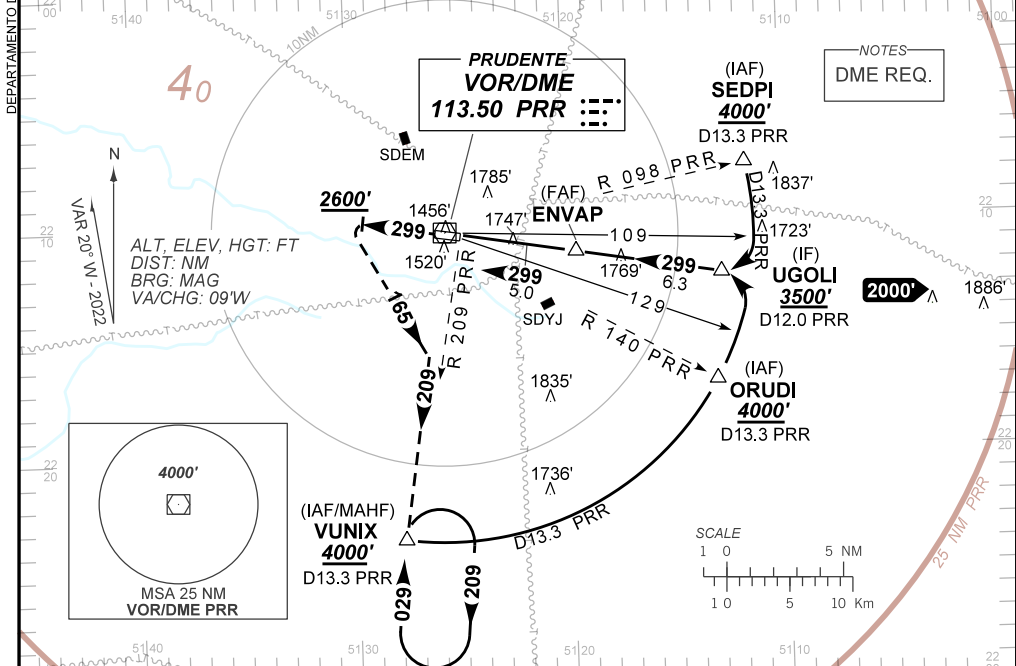
VOR Y RWY 30

ATIS NIL	APP PRUDENTE 125.45	TWR PRUDENTE 118.45	AFIS PRUDENTE 125.45	GNDC NIL
-------------	------------------------	------------------------	-------------------------	-------------

VOR PRR 113.50 MHz	FINAL CRS 299°	FAF: 3130'	N/A	VOR MDA / (OCH): 2000' / (520')
-----------------------	-------------------	---------------	-----	------------------------------------

APCH Perdida: 1) Subir para **4000'**. Manter RDL **299** VOR PRR até **2600'**. Após, curvar a ESQUERDA proa **165** para interceptar a RDL **209** VOR PRR para espera VUNIX. 2) IAS MAX 200KT até interceptar a RDL **209** VOR PRR.

Missed APCH: 1) Climb to **4000'**. Maintain **299** RDL PRR VOR until **2600'**. After, turn LEFT heading **165** to intercept **209** RDL PRR VOR for holding at VUNIX. 2) IAS MAX 200KT until intercept **209** RDL PRR VOR.



RWY30	1.5	2.0	3.0	4.0	ENVAP	Ground Speed (KT)	090	110	130	150	170	190
ALT	2000	2168	2486	2805	3130	FPM	500	600	700	800	900	NA
(HGT)	520	687	1005	1324	1649	FAF-MAPT	NA					

STRAIGHT-IN	CAT	A	B	C	D	E
	MDA / (OCH)	2000' / (520')				
VOR	ALS/NO ALS/ RVR ALS (m)	NIL / 1600 / NIL		NIL / 2400 / NIL		
		NA				
CIRCLING	MDA / (OCH)	NA				
	VIS (m)	NA				

DEPARTAMENTO DE CONTROLE DO ESPAÇO AÉREO

CHANGES: HDG, LAYOUT, OBST, VAR.