

CARTA DE APROXIMAÇÃO
POR INSTRUMENTOS (IAC)
INSTRUMENT APPROACH CHART (IAC)

MANAUS / Eduardo Gomes, INTL (SBEG)

RNAV (GNSS) RWY 11

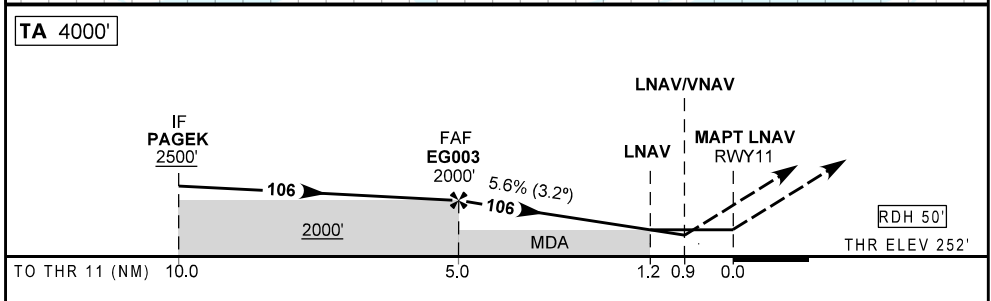
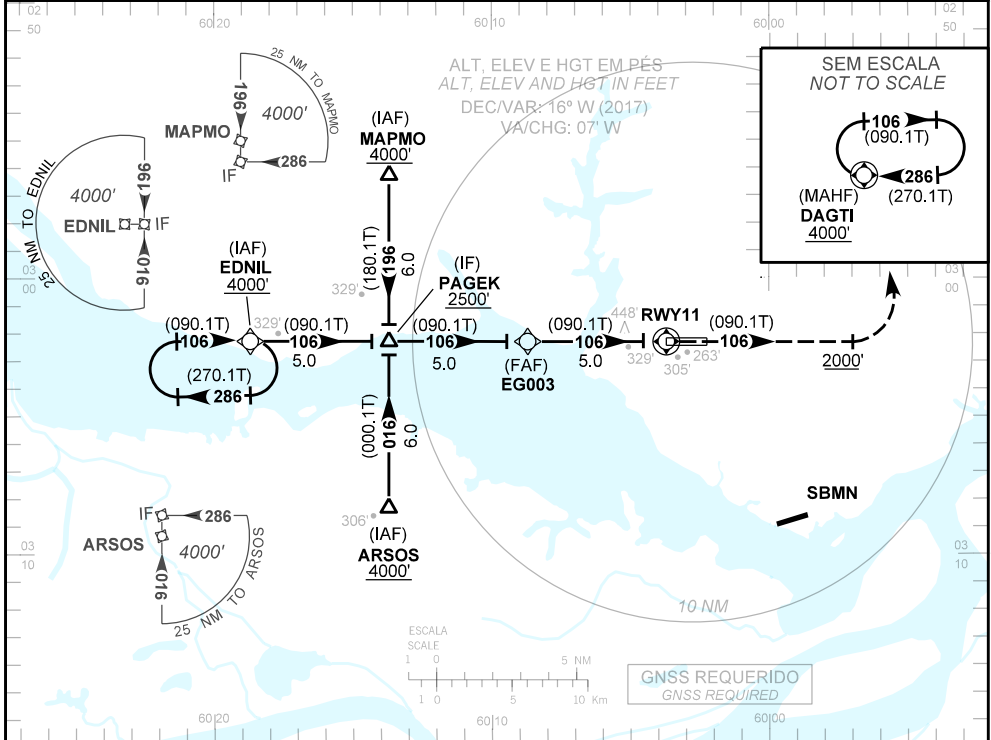
| | | | | |
|---------------|----------------|---|------------------------------------|------------------------------|
| AD ELEV: 264' | ATIS 127.65 | APP MANAUS 119.25 119.70 120.40 121.50 | TWR EDUARDO GOMES 118.30 121.50 | GNDC EDUARDO GOMES 121.90 |
|---------------|----------------|---|------------------------------------|------------------------------|

RMK: 1) Procedimento BARO-VNAV não autorizado abaixo de 0°C e acima de 50°C.
2) ATIS D-ATIS (DATALINK ATIS) AVBL

RMK: 1) BARO-VNAV procedure not authorized below 0°C and above 50°C.
2) ATIS D-ATIS (DATALINK ATIS) AVBL

Aproximação Perdida: 1) Subir para 4000'. Manter rumo 106 até 2000'. Após, curvar à esquerda, para espera em DAGTI.
2) IAS MAX 230Kt.

Missed Approach: 1) Climb to 4000'. Maintain course 106 until 2000'. Then, turn left for holding at DAGTI.
2) MAX IAS 230Kt.



| | | | | | | | | | | | | | |
|-------|------|------|-----|-----|-------|--|----------|-----|-----|-----|-----|------|------|
| EG003 | 4.0 | 3.0 | 2.0 | 1.2 | RWY11 | | KT | 090 | 110 | 130 | 150 | 170 | 190 |
| 2070 | 1660 | 1321 | 981 | 700 | ALT | | FPM | 550 | 650 | 750 | 850 | 1000 | 1100 |
| 1818 | 1408 | 1069 | 729 | 448 | (HGT) | | FAF-MAPT | | | NIL | | | |

| POUSO DIRETO STRAIGHT-IN | CAT | A | B | C | D | E |
|--------------------------|-------------------------|------------------|---|-------------------|---|---|
| LNAV/VNAV | DA / OCH / TETO | | | 612 / 360 / 400 | | |
| | ALS/NO ALS/ RVR ALS (m) | | | 900 / 1600 / NIL | | |
| LNAV | MDA / OCH / TETO | | | 700 / 450 / 500 | | |
| | ALS/NO ALS/RVR ALS (m) | 800 / 1600 / NIL | | 1400 / 2100 / NIL | | |
| CIRCULAR TO CIRCLE | MDA / OCH / TETO | NA | | | | |
| | VIS (m) | NA | | | | |

MODIFICAÇÕES / CHANGES: FREQ. PROC.