

**INSTRUMENT APPROACH
CHART (IAC)**

PALMAS / Brigadeiro Lysias Rodrigues (SBPJ)

AD ELEV: 774'

RNP Y RWY 32

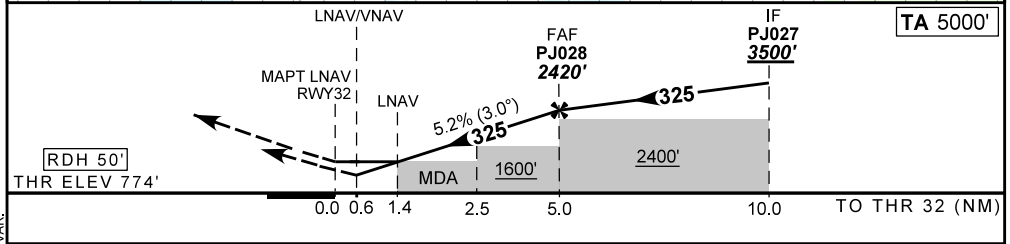
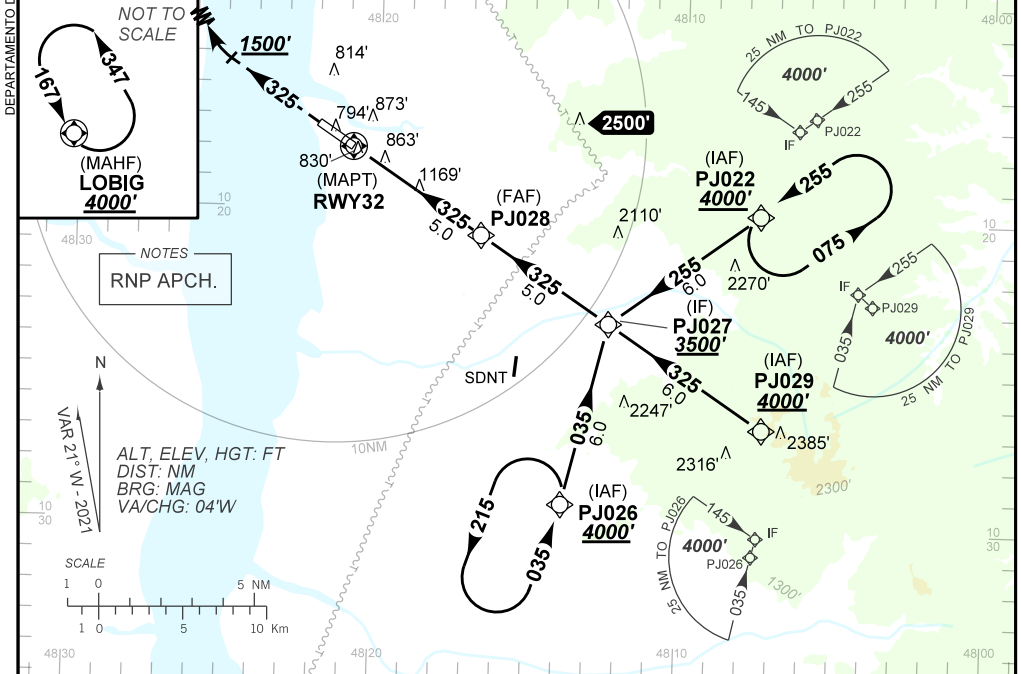
ATIS NIL	APP PALMAS 119.00	TWR PALMAS 118.00	GNDC NIL
TEMP LNAV/VNAV MIN 5°C / MAX 45°C	FINAL CRS 325°	FAF: 2420'	LNAV/VNAV DA / (OCH): 1024' / (250')
		MDA / (OCH): 1260' / (490')	

APCH Perdida: Subir para **4000'**. Manter proa **325** até passar **1500'**. Após, curvar à DIREITA direto LOBIG para espera.

Missed APCH: Climb to **4000'**. Maintain heading **325** until passing **1500'**. After, turn RIGHT direct to LOBIG for holding.

RMK: NIL.

DEPARTAMENTO DE CONTROLE DO ESPAÇO AÉREO



RWY32	0.6	1.4	2.5	3.0	4.0	PJ028	Ground Speed (KT)	090	110	130	150	170	190
ALT	1024	1260	1620	1780	2098	2420	FPM	500	600	700	800	900	NIL
(HGT)	250	490	850	1006	1324	1650	FAF-MAPT	NIL					

STRAIGHT-IN	CAT	A	B	C	D	E
	DA / (OCH)	1024' / (250')				NA
LNAV/VNAV	ALS/NO ALS/ RVR ALS (m)	NIL / 1300 / NIL				
	MDA / (OCH)	1260' / (490')				
LNAV	ALS/NO ALS/ RVR ALS (m)	NIL / 1600 / NIL		NIL / 2300 / NIL		
	CIRCLING	MDA / (OCH)	NA			
	VIS (m)					

CHANGES: IDENT LAYOUT, MDA, PROC, VAR.