

**INSTRUMENT APPROACH  
CHART (IAC)**

**SANTA MARIA / Santa Maria (SBSM)**

**AD ELEV: 289'**

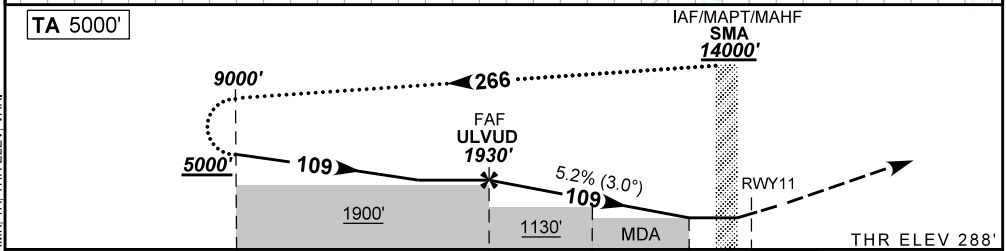
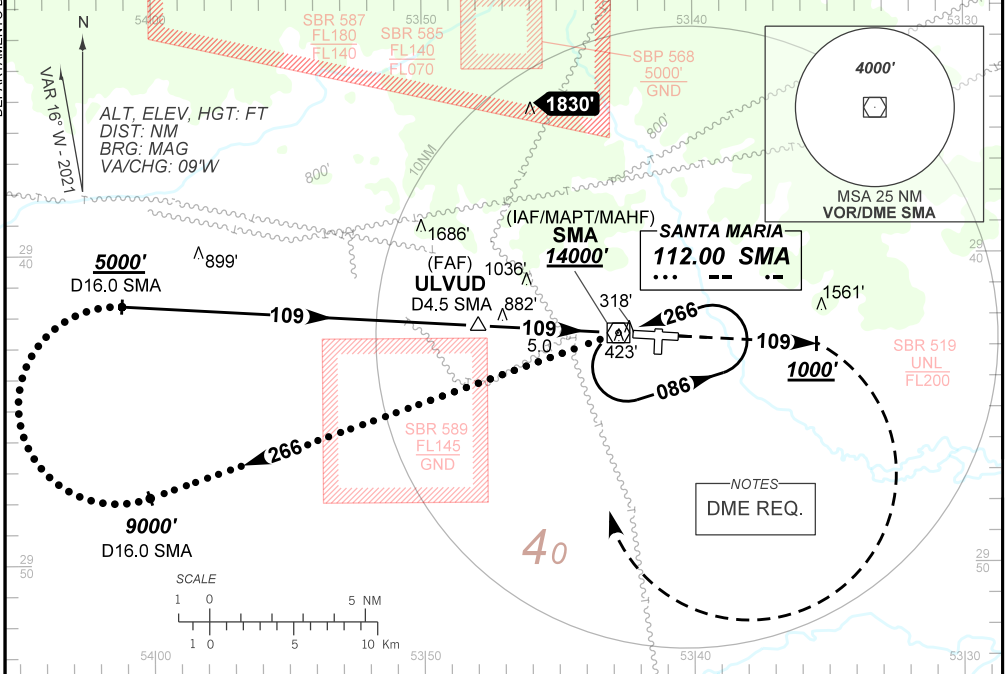
**USO EXCLUSIVO ACFT MILITARES  
MILITARY ACFT ONLY**

**VOR Y RWY 11**

ATIS <b>127.75</b>	APP SANTA MARIA <b>119.35 121.35</b>	TWR SANTA MARIA <b>118.30 118.85 122.80(MIL)</b>	AFIS SANTA MARIA <b>119.35 121.35 118.30</b>	GNDC <b>NIL</b>
VOR SMA <b>112.00 MHz</b>	FINAL CRS <b>109°</b>	FAF: <b>1930'</b>	N/A	VOR MDA / (OCH): <b>760' / (470')</b>

APCH Perdida: Subir para **14000'**. Manter RDL **109** do VOR SMA até **1000'**. Após, curvar à DIREITA direto VOR SMA para espera.  
Missed APCH: Climb to **14000'**. Maintain **109** RDL SMA VOR until **1000'**. After, turn RIGHT direct to SMA VOR for holding.

RMK: NIL.



TO THR 11 (NM)	16.5	5.0	3.2	1.3	0.5	0.0	THR ELEV 288'
TO SMA (DME)	16.0	4.5	2.7	0.8	0.0		

ULVUD	4.0	3.2	2.0	1.3	RWY11	Ground Speed (KT)	090	110	130	150	170	190
1930	1612	1360	975	760	ALT	FPM	500	600	700	800	900	1000
1642	1324	1069	687	470	(HGT)	FAF-MAPT	NA					

STRAIGHT-IN	CAT	A	B	C	D	E
	MDA / (OCH)	760' / (470')				
VOR	ALS/NO ALS/ RVR ALS (m)	800 / 1600 / 700			1500 / 2200 / 1400	
	MDA / (OCH)	NA				
CIRCLING	VIS (m)	NA				

AIRAC AMDT 2107A1 15 JUL 21

SBSM\_IAC\_00N/11

**USO EXCLUSIVO ACFT MILITARES / MILITARY ACFT ONLY**

**IAC VOR Y RWY 11**

DEPARTAMENTO DE CONTROLE DO ESPAÇO AEREO

CHANGES: LAYOUT, MINM OPR, PROC, RMK, TA, THR, ELEV, VAR.