

INSTRUMENT APPROACH CHART (IAC)

SÃO PAULO / Congonhas (SBSP)

AD ELEV: 2631'

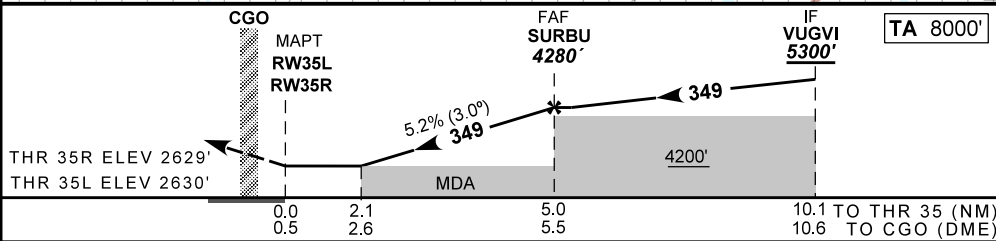
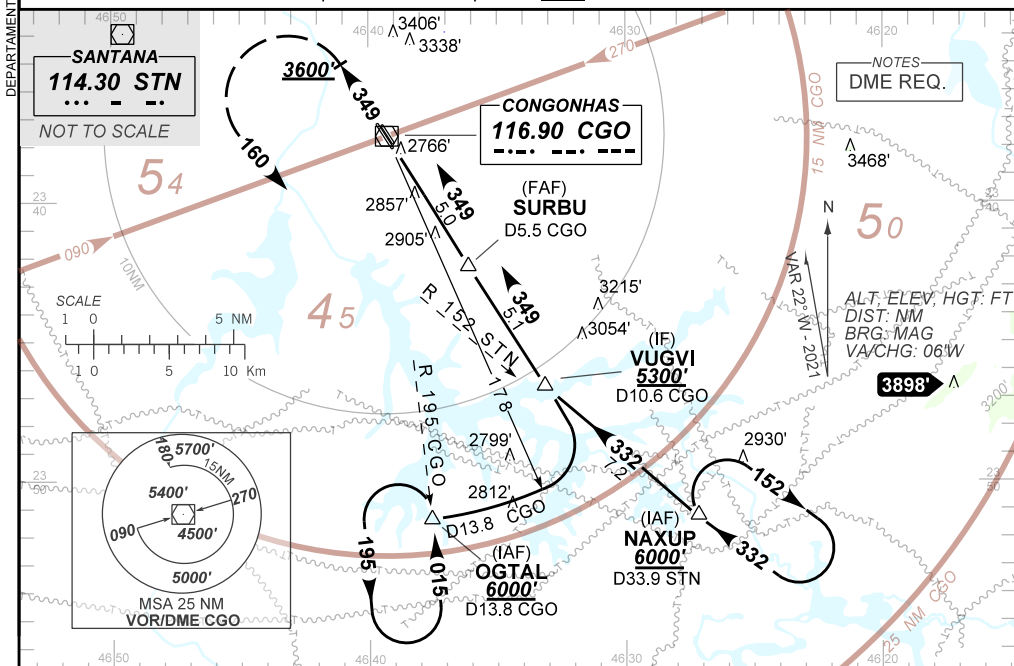
VOR Y RWY 35L / 35R

D-ATIS 127.65	APP SÃO PAULO 119.15 120.45 120.85 129.75 133.85	TWR SÃO PAULO 118.05 127.15	GNDC SÃO PAULO 121.90
VOR CGO 116.90	FINAL CRS 349°	FAF 4280'	N/A
VOR MDA / (OCH): 3360' / (730')			

APCH Perdida: Subir para **6000'**. Manter proa **349°** e gradiente MNM 4% até cruzar **3600'**. Após, curvar à ESQUERDA proa **160°** para interceptar a RDL **195°** VOR CGO para OG TAL para espera.

Missed APCH: Climb to **6000'**. Maintain course **349°** and MNM gradient 4% until passing **3600'**. Then, Turn LEFT heading **160°** to intercept RDL **195°** CGO VOR to OG TAL for holding.

RMK: IAS MAX 220KT até interceptar / until intercept RDL **195°** CGO.



RWY35	2.1	3.0	4.0	SURBU						
ALT	3360	3636	3954	4280						
(HGT)	730	1006	1324	1650						

KT	090	110	130	150	170	190
FPM	500	600	700	800	900	1050
FAF-MAPT	NA					

STRAIGHT-IN	CAT	A	B	C	D	E
VOR	MDA / (OCH)	3360' / (730')				NA
	ALS/NO ALS/RVR ALS (m)	NIL / 3400 / NIL				
CIRCLING	MDA / (OCH)	NA				
	VIS (m)					

CHANGES: DEC. FREQ. IDENT. MINM OPR. PROC...