

DEPARTURE CHART
INSTRUMENT (SID)

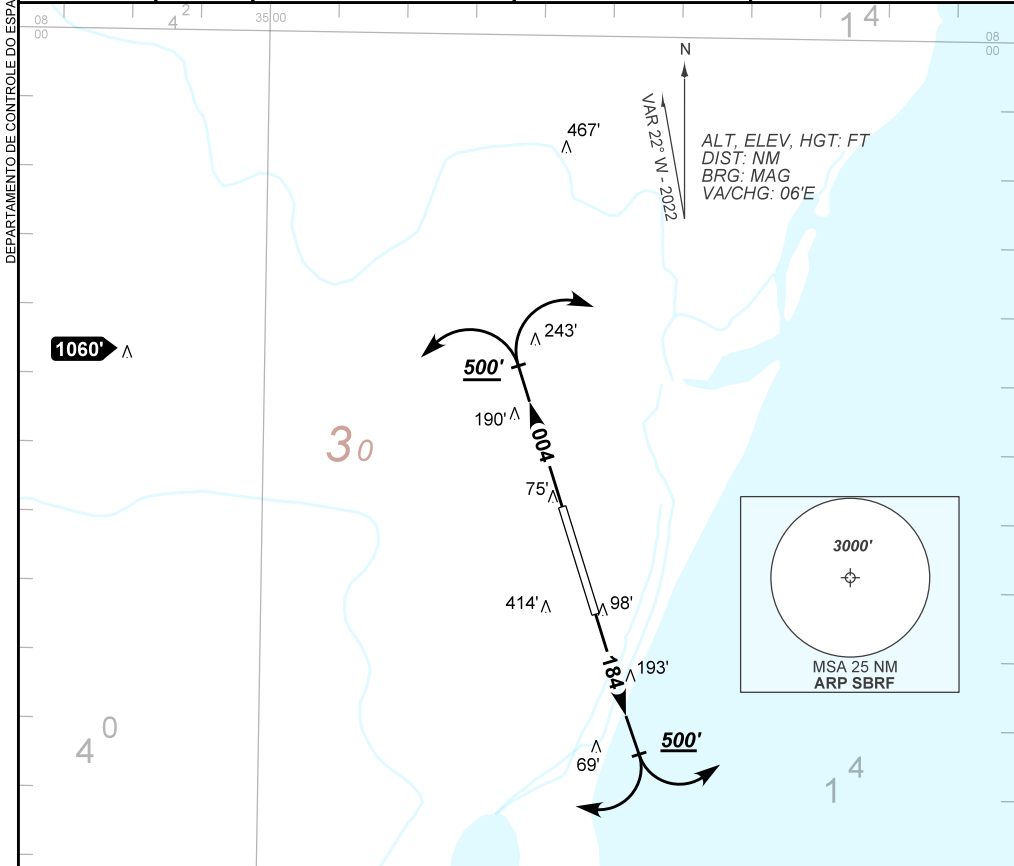
RECIFE / Guararapes - Gilberto Freyre, INTL (SBRF)

RWY 18 / 36

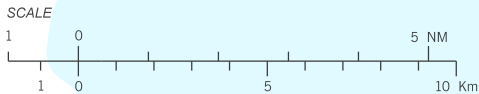
OMNI

AD ELEV: 33'

TA 4000'	D-ATIS 127.65	TWR RECIFE 118.35 125.25	APP RECIFE 119.50 119.95 120.40 129.60	ACC RECIFE 128.70 134.80 128.05 135.80 133.65 134.50
----------	------------------	-----------------------------	--	--



- 1 - Autorizado somente / Only authorized ACFT Cat A, B, C, D.
- 2 - Obstáculos próximos não considerados para o cálculo do PDG :
Close-in obstacles not considered for procedure gradient PDG :
RWY18: Terreno / Terrain, a partir de / from THR36, AZM121, DIST 196m, ELEV 98'.
RWY36: Terreno / Terrain, a partir de / from THR18, AZM317, DIST 275m, ELEV 75'.
- 3 - Não permitido curvas antes do DER.
Turns are not permitted prior to the DER.
- 4 - Procedimento de Atenuação de Ruído: Entre 0100 - 0900 UTC, executar o Proc. de Atenuação específico do EQPT ou manter V2+10KT até 900FT após entre V2+10KT e V2+20KT até 3100FT.
Noise Abatement Procedure BTN 0100-0900 UTC, execute Specific Noise Abatement Procedure of EQPT or maintain V2+10KT up to 900FT after BTN V2+10KT and V2+20KT up to 3100FT.



CHANGES: ALT, AMA, OBST, RMK.