

**INSTRUMENT APPROACH
CHART (IAC)**

SÃO GONÇALO DO AMARANTE / Gov. Aluizio Alves, INTL (SBSG)

RNP RWY 30

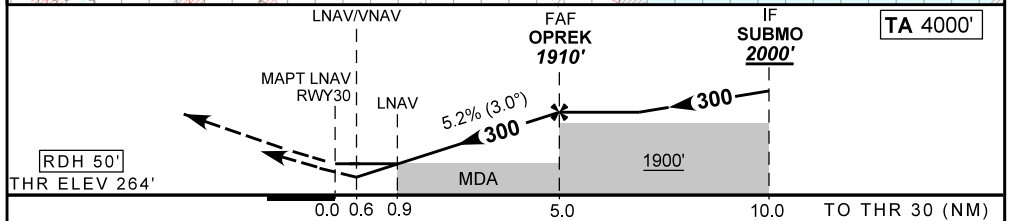
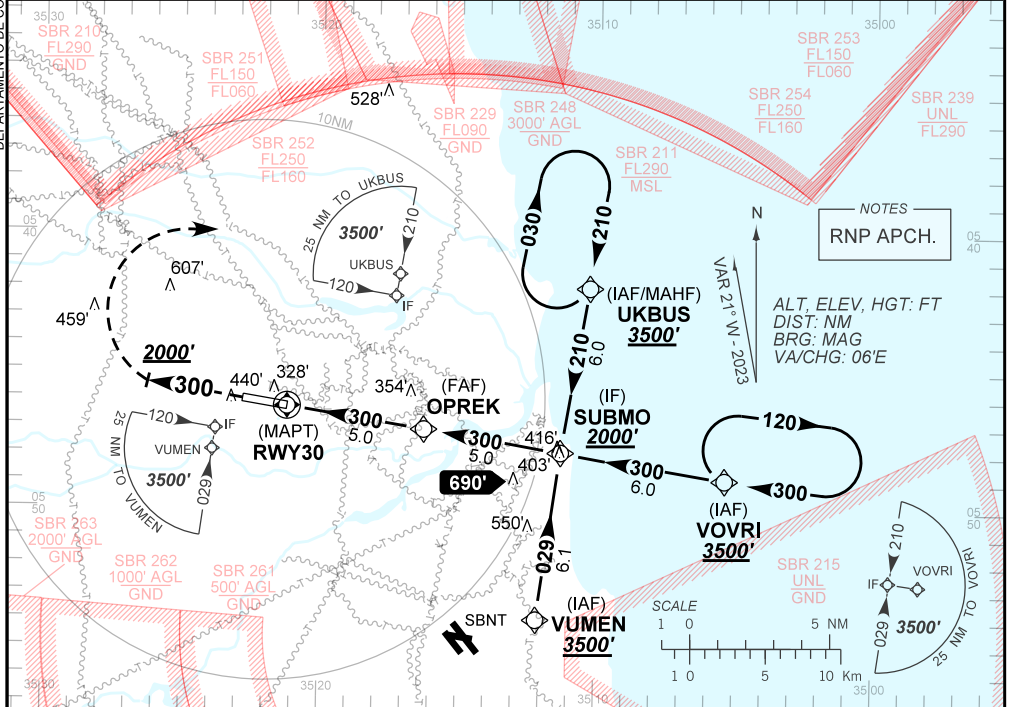
AD ELEV: 273'

ATIS 127.60	APP NATAL 119.30 119.65 120.65 129.80	TWR SÃO GONÇALO 118.20 118.85	GNDC SÃO GONÇALO 121.70
-----------------------	---	---	-----------------------------------

TEMP LNAV/VNAV MIN 0°C / MAX 50°C	FINAL CRS 300°	FAF: 1910'	LNAV/VNAV DA / (OCH): 514' / (250')	LNAV MDA / (OCH): 600' / (340')
---	--------------------------	----------------------	---	---

APCH Perdida: Subir para **3500'**. Manter proa **300** até **2000'**. Após, curvar à DIREITA direto UKBUS para espera.
Missed APCH: Climb to **3500'**. Maintain heading **300** until **2000'**. After, turn RIGHT direct UKBUS for holding.

DEPARTAMENTO DE CONTROLE DO ESPAÇO AÉREO



RWY30	0.9	2.0	3.0	4.0	OPREK	Ground Speed (KT)	090	110	130	150	170	190
ALT	600	951	1269	1588	1910	FPM	500	600	700	800	900	1000
(HGT)	340	687	1005	1324	1646	FAF-MAPT	NIL					

STRAIGHT-IN	CAT	A	B	C	D	E	
	DA / (OCH)	514' / (250')					NA
LNAV/VNAV	ALS/NO ALS/ RVR (m)	NIL / 1300 / 1100					NA
	MDA / (OCH)	600' / (340')					
LNAV	ALS/NO ALS/ RVR (m)	NIL / 1600 / 1550					
	MDA / (OCH)	NA					
CIRCLING	MDA / (OCH)	NA					
	VIS (m)	NA					

CHANGES: PROC. MIN OPR. THR ELEV. VAR.