

**INSTRUMENT APPROACH
CHART (IAC)**

GAVIÃO PEIXOTO / EMBRAER - Unidade Gavião Peixoto (SBGP)

AD ELEV: 1998'

**USO EXCLUSIVO ACFT MILITARES
MILITARY ACFT ONLY**

ILS Y RWY 20L

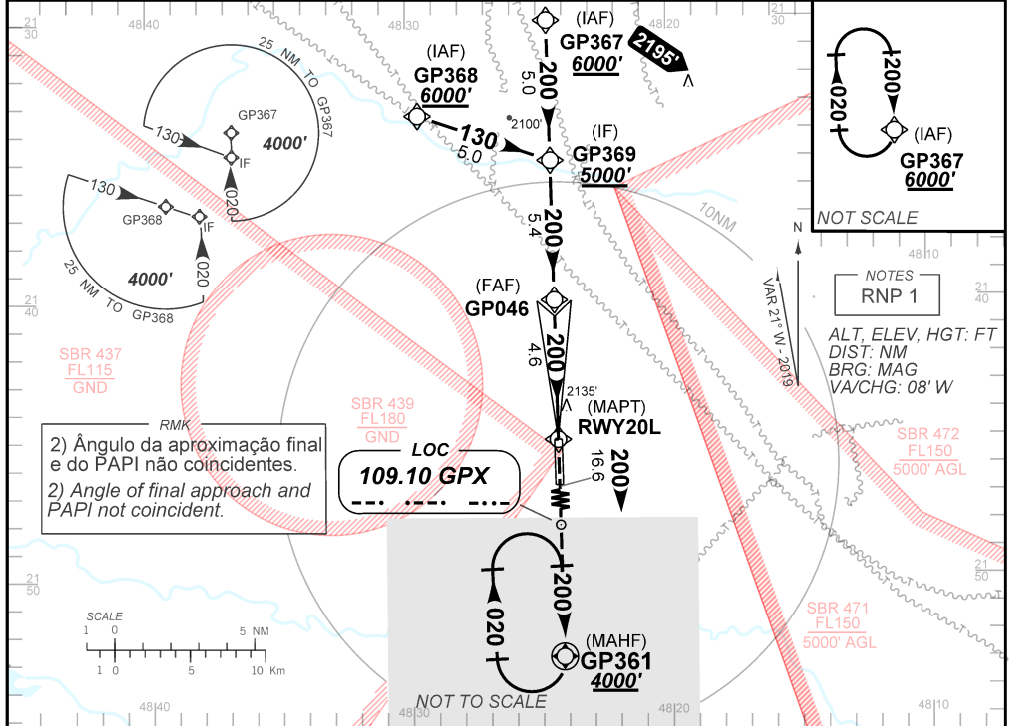
ATIS NIL	APP ACADEMIA 122.10 122.40	AFIS GAVIÃO 118.95	LOC GPX 109.10 MHz
--------------------	--------------------------------------	------------------------------	------------------------------

FINAL CRS 200°	FAF: 5000'	CAT I DA / (OCH): 2321' (324')	N/A
--------------------------	----------------------	--	------------

APCH Perdida: Subir para **4000'**. Manter rumo **200** até GP361 para espera.

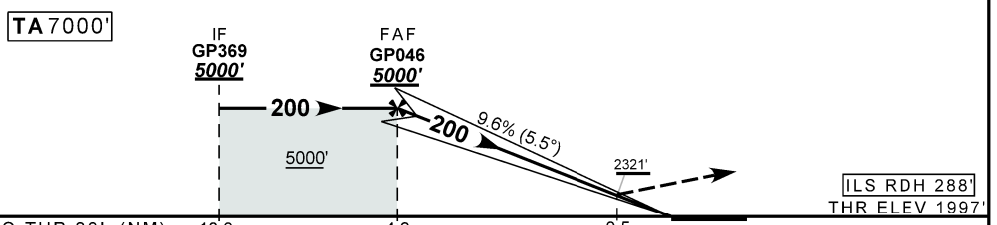
Missed APCH: Climb to **4000'**. Maintain course **200** up to GP361 for holding.

RMK: 1) Procedimento de uso exclusivo da EMBRAER para ensaio em voo. Compulsório voo diurno sob VFR.
1) Procedure of exclusive use by EMBRAER for flight test. Compulsory daylight flight under VFR.



RMK
2) Ângulo da aproximação final do PAPI não coincidentes.
2) Angle of final approach and PAPI not coincident.

LOC
109.10 GPX



TA 7000'	IF GP369 5000'	FAF GP046 5000'	ILS RDH 288'
THR 20L (NM)	10.0	4.6	0.5
	NIL	RWY20L	NIL
	NIL	ALT	NIL
	NIL	(HGT)	NIL
		KT	NIL
		FPM	NIL
		FAF-MAPT	NIL

STRAIGHT-IN	CAT	A	B	C	D	E
CAT I	DA / (OCH)	2321' / (324')				
	ALS/NO ALS/ RVR ALS (m)	NIL / 1600 / NIL				
CIRCLING	MDA / (OCH)	NA				
	VIS (m)	NA				

CHANGES: FREQ. IDENT. LAYOUT: TA