

**INSTRUMENT APPROACH
CHART (IAC)**

GUARATINGUETÁ / Campo Edu Chaves (SBGW)

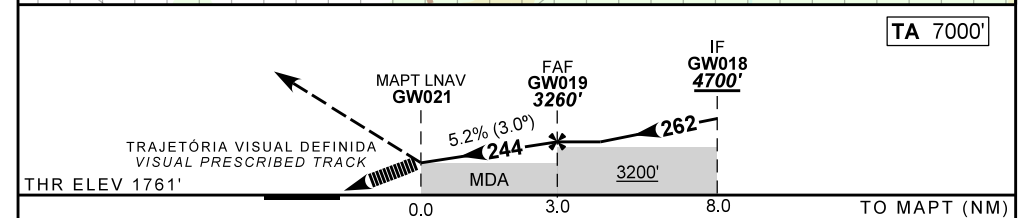
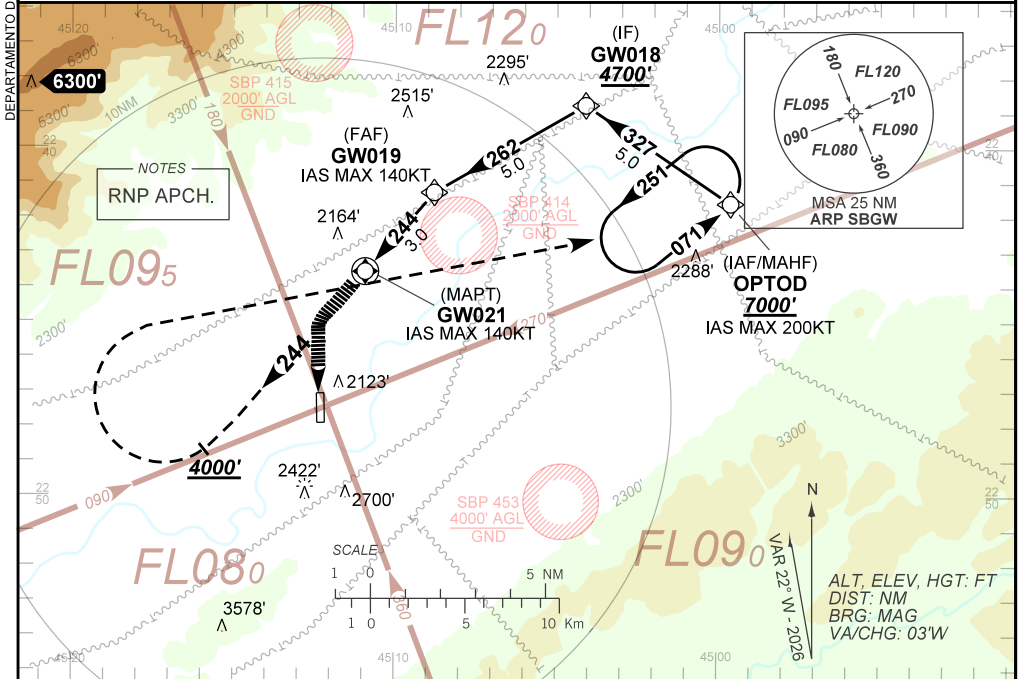
RNP A RWY 20
CAT (A,B,C)

AD ELEV: 1761'

ATIS NIL	APP GUARÁ 120.15	TWR GUARÁ 118.15	AFIS GUARÁ 120.15	GNDC NIL
N/A	FINAL CRS 244°	FAF: 3260'	N/A	N/A

APCH Perdida: 1) Subir para **7000'**. Manter proa **224** até **4000'**. Após, curvar à DIREITA direto OPTOD para espera. 2) Gradiente MNM 5.0% até 6000'. Após, 2.5%. 3) IAS MAX 180KT até OPTOD.

Missed APCH: 1) Climb to **7000'**. Maintain heading **224** until **4000'**. After, turn RIGHT direct OPTOD for holding. 2) MNM gradient 5.0% until 6000'. After, 2.5%. 3) IAS MAX 180KT until OPTOD.



MAPT	GW021	1.0	2.0	GW019					
ALT	2400	2718	3036	3260					
(HGT)	640	957	1275	1499					

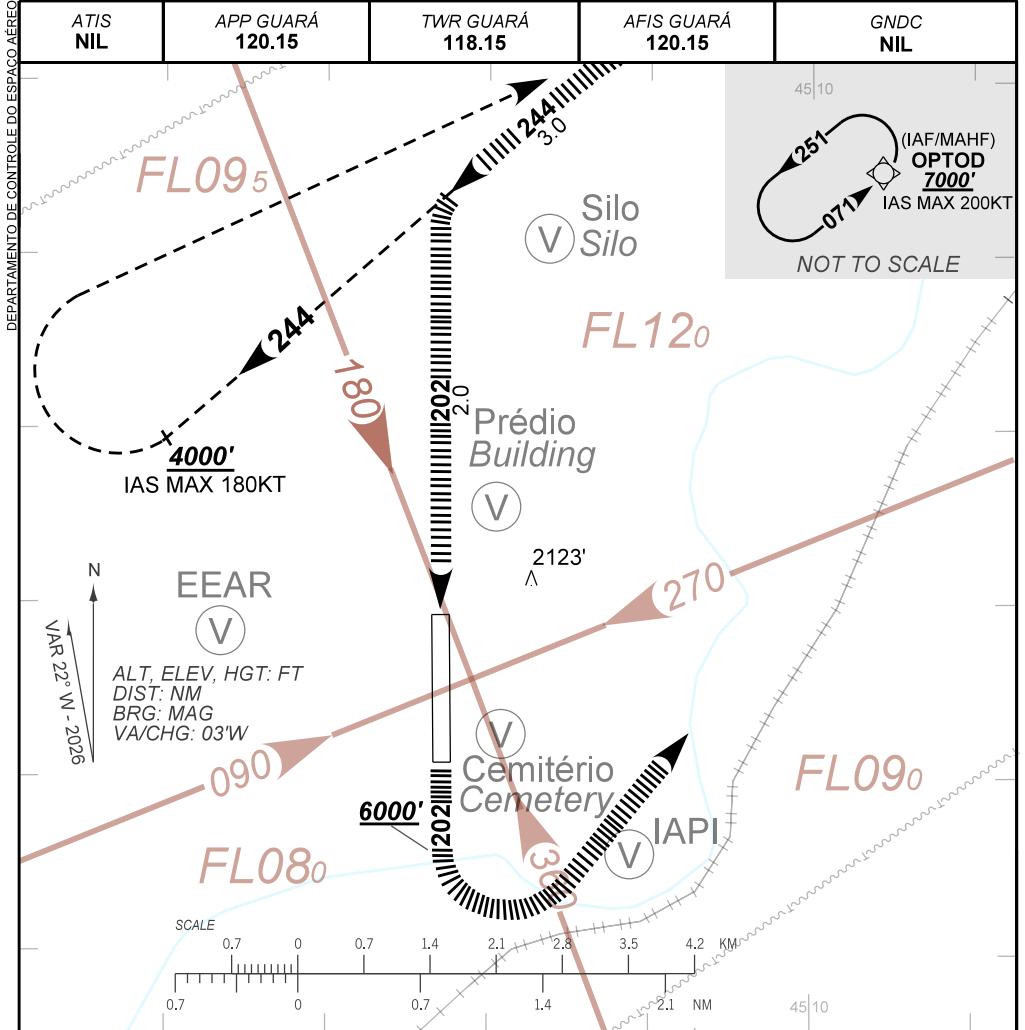
Ground Speed (KT)	090	110	130	150	170	190
FPM	500	600	700	800	NA	NA
FAF-MAPT	NA					

STRAIGHT-IN	CAT	A	B	C	D	E
	MDA / (OCH)					
LNAV	ALS / NO ALS / RVR ALS (m)					
CIRCLING	MDA / (OCH)	2400' / (640')			NA	
	VIS (m)	1900	2800	3700		

CHANGES: AFIS, MSA, VAR.

DEPARTAMENTO DE CONTROLE DO ESPAÇO AÉREO

AD ELEV: 1761'



TRAJETÓRIA VISUAL DEFINIDA RWY 20
VISUAL PRESCRIBED TRACK RWY 20

1) O procedimento deverá ser autorizado pelo APP GUARÁ durante a aproximação final e aproximação perdida.

Procedure must be authorized by GUARÁ APP on final and missed approach.

2) O piloto deverá estar em contato visual e prover sua própria separação com as referências visuais:

Silo (S22 44.90 W045 11.62), Prédio (S22 46.44 W045 11.95) e a EEAR (S22 47.16 W045 13.66).

The pilot should have visual contact and provide his own separation with the visual references: Silo

(S22 44.90 W045 11.62), Building (S22 46.44 W045 11.95) and EEAR (S22 47.16 W045 13.66).

3) Em caso de arremetida durante a manobra para circular: Subir imediatamente para 7000' no rumo 202.

Após 6000', voar direto OPTOD para espera.

In case of go around during the circling maneuver: Immediately climb to 7000' on course 202. After 6000', fly direct OPTOD for holding.

4) Observar concentração de pássaros na vizinhança do aeródromo.

Observe to bird concentration in the vicinity of the aerodrome.

5) Observar AIC sobre circulação visual na Terminal São Paulo. (REA Mike).

See AIC about visual flight in São Paulo Terminal area. (MIKE REA).

CHANGES: AFIS. MSA. VAR.