

**INSTRUMENT APPROACH CHART (IAC)**

**SÃO PAULO / Congonhas - Deputado Freitas Nobre (SBSP) RNP T RWY 17L**

(CAT A, B, C)

**AD ELEV: 2634'**

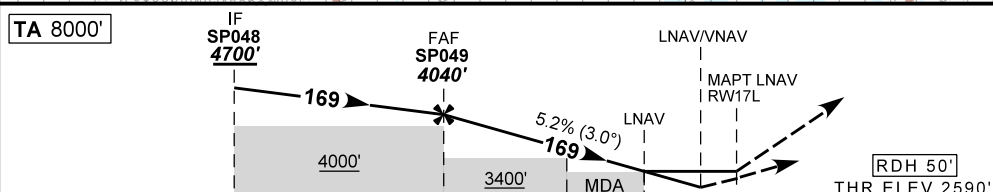
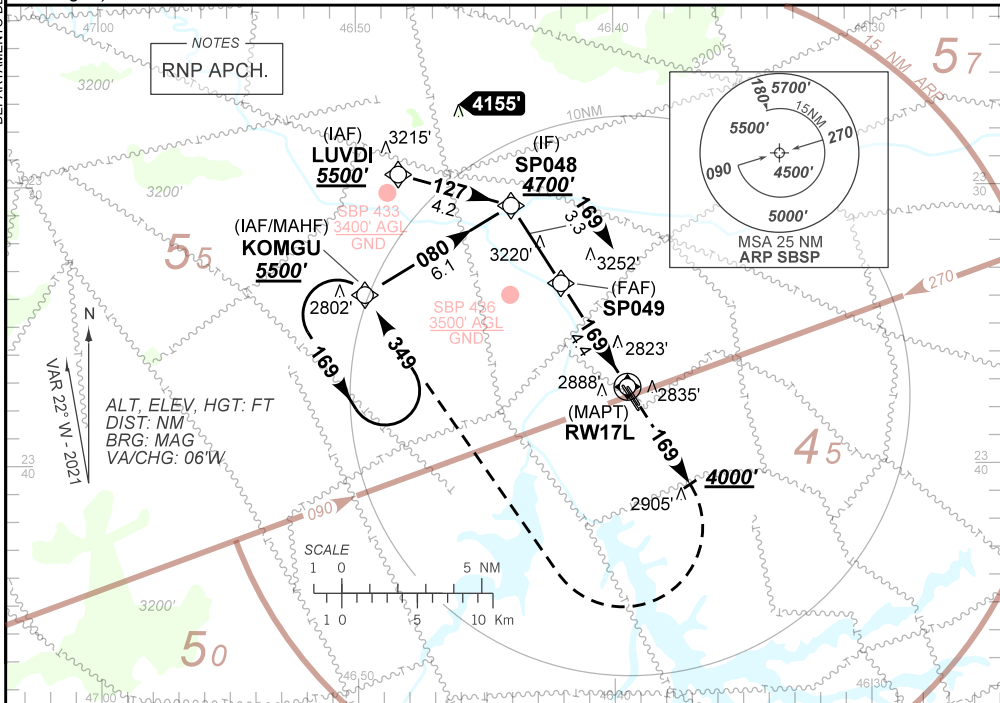
D-ATIS <b>127.65</b>	APP SÃO PAULO <b>129.75 119.15 120.45 120.85 133.85</b>	TWR SÃO PAULO <b>118.05 127.15</b>	GNDC SÃO PAULO <b>121.90</b>
-------------------------	--	---------------------------------------	---------------------------------

TEMP LNAV/VNAV <b>MIN 0°C / MAX 50°C</b>	FINAL CRS <b>169°</b>	FAF: <b>4040'</b>	LNAV/VNAV DA / (OCH): <b>3040' / (450')</b>	LNAV MDA / (OCH): <b>3100' / (510')</b>
---	--------------------------	----------------------	--	--

APCH Perdida: 1) Subir para **5500'**. Manter rumo **169°** até **4000'**. Após, curvar à DIREITA direto KOMGU para espera. 2) IAS MAX 200KT.

Missed APCH: 1) Climb to **5500'**. Maintain course **169°** until **4000'**. After, turn RIGHT direct KOMGU for holding. 2) IAS MAX 200KT.

DEPARTAMENTO DE CONTROLE DO ESPAÇO AÉREO



TO THR 17L (NM)	7.7	4.4	2.4	1.4	1.3	0.0	THR ELEV 2590'
-----------------	-----	-----	-----	-----	-----	-----	----------------

SP049	4.0	3.0	2.4	2.0	1.4	RWY17L	Ground Speed (KT)	090	110	130	150	170	190
4040	3914	3595	3404	3277	3100	ALT	FPM	500	600	700	800	NA	NA
1450	1324	1005	814	687	510	(HGT)	FAF-MAPT	NA					

STRAIGHT-IN	CAT	A	B	C	D	E
	DA / (OCH)	3040' / (450')				
LNAV/VNAV	ALSF/NO ALSF/RVR ALSF (m)	NIL / 2100 / NIL				
	MDA / (OCH)	3100' / (510')				
LNAV	ALSF/NO ALSF/RVR ALSF (m)	NIL / 2100 / NIL		NIL / 2400 / NIL		
	MDA / (OCH)	NA				
CIRCLING	MDA / (OCH)	NA				
	VIS (m)	NA				

CHANGES: MDA, MSA.