

INSTRUMENT APPROACH CHART (IAC)

SÃO PAULO / Guarulhos - Gov. André Franco Montoro, INTL (SBGR)

ILS Z or LOC Z RWY 27L

AD ELEV: 2461'

D-ATIS 127.75	APP SÃO PAULO 119.15 120.85 122.75 123.25 129.00 129.75	TWR GUARULHOS 118.40 132.75 135.20	GNDC GUARULHOS 121.70 126.90
-------------------------	---	--	--

LOC IBC 111.10 MHz	FINAL CRS 275°	FAF: 4090'	CAT I DA / (OCH): REFER TO MNM	LOC Only MDA / (OCH): 2980' / (540')
------------------------------	--------------------------	----------------------	--	--

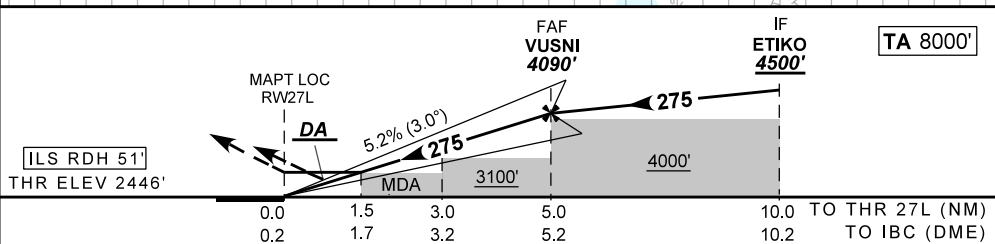
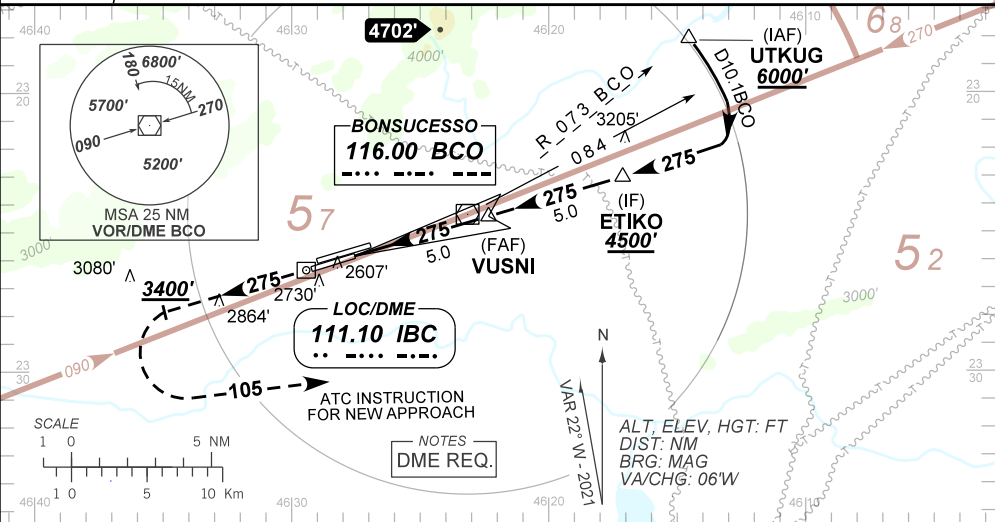
APCH Perdida: Subir para **6000'**. Manter proa **275** até cruzar **3400'**. Após, curvar à ESQUERDA na proa **105** e aguardar instruções ATC. IAS MAX 230KT.

Missed APCH: Climb to **6000'**. Maintain heading **275** until passing **3400'**. After, turn LEFT heading **105** and expect ATC instructions. IAS MAX 230KT.

RMK:1) (*)VIS RVR ALS 550m para APCH utilizando Diretor de Voo, Piloto Automático ou HUD; 2) RADAR REQ.
(*) VIS RVR ALS 550m para APCH using a Flight Director, Autopilot or HUD. 2) RADAR REQ.

ARREMETIDA VISUAL RWY 27R: Subir para **6000'**. Manter proa **275** até **6000'**. Após, curvar à DIREITA na proa **085** e aguardar instruções ATC.
VISUAL GO AROUND RWY 27R. Climb to **6000'**. Maintain heading **275** until **6000'**. Then, turn RIGHT heading **085** and expect ATC instructions.

DEPARTAMENTO DE CONTROLE DO ESPAÇO AEREO



RW27L	0.5	2.0	3.0	4.0	VUSNI	Ground Speed (KT)	090	110	130	150	170	190
ALT	2646	3133	3452	3770	4090	FPM	500	600	700	800	900	NA
(HGT)	200	687	1006	1324	1644	FAF-MAPT	NA					

STRAIGHT-IN	CAT	A	B	C	D	E
	DA / (OCH)	2646' / (200')				2711' / (265')
CAT I	ALS/NO ALS/ RVR ALS (m)	800 / 1200 / 700*				800 / 1300 / 700*
	MDA / (OCH)	2980' / (540')				
LOC	ALS/NO ALS/RVR ALS (m)	800 / 1600 / NIL		1700 / 2400 / NIL		
	MDA / (OCH)	NA				
CIRCLING	MDA / (OCH)	NA				
	VIS (m)	NA				

CHANGES: NEW CHART.