

**INSTRUMENT APPROACH  
CHART (IAC)**

**SÃO PAULO / Guarulhos - Gov. André Franco Montoro, INTL (SBGR)**

**ILS T RWY 09R**

**AD ELEV: 2461'**

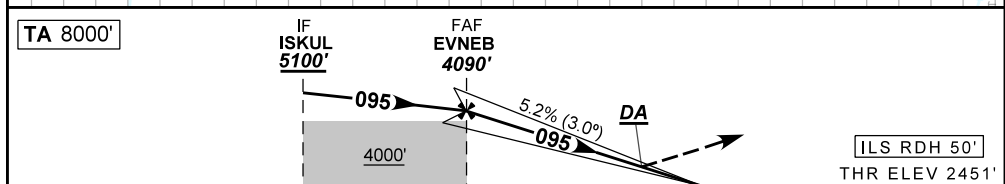
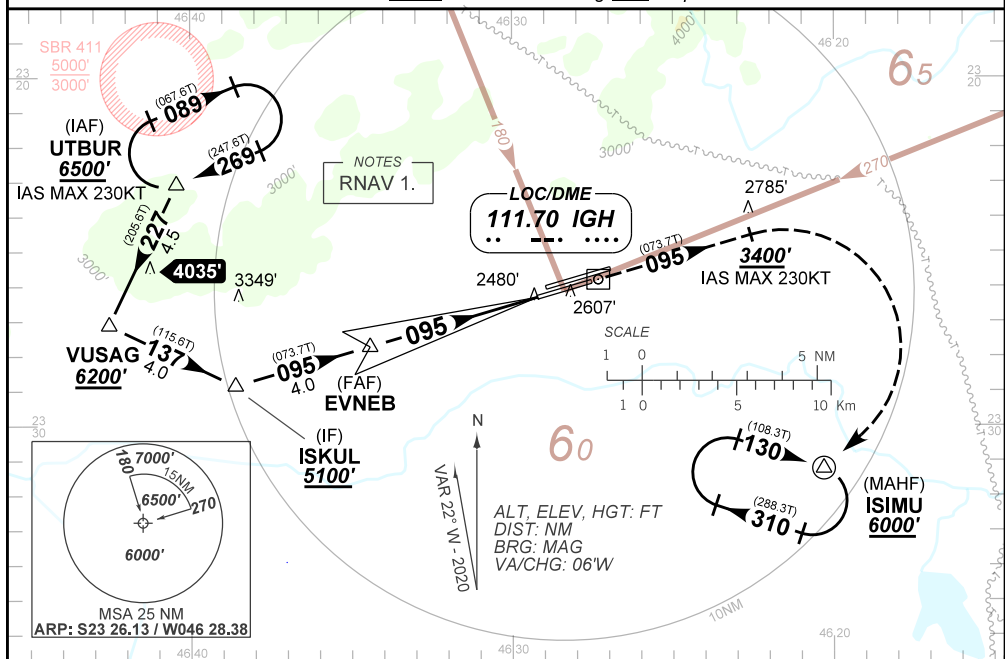
D-ATIS <b>127.75</b>	APP SÃO PAULO <b>129.75 119.15 120.45 120.85 133.85 121.50</b>	TWR GUARULHOS <b>118.40 132.75 135.20 121.50</b>	GNDC GUARULHOS <b>121.70 126.90</b>
-------------------------	---	---	--

LOC IGH <b>111.70 MHz</b>	FINAL CRS <b>095°</b>	FAF <b>4090'</b>	CAT I DA / (OCH): <b>REFER TO MNM</b>	<b>N/A</b>
------------------------------	--------------------------	---------------------	--	------------

APCH Perdida: 1) Subir para **6000'**. Manter proa **095** até cruzar **3400'**. Após, curvar à DIREITA direto ISIMU para espera. 2) IAS MAX 230 KT.  
Missed APCH: 1) Climb to **6000'**. Maintain heading **095** until passing **3400'**. After, turn RIGHT direct to ISIMU for holding. 2) IAS MAX 230 KT.

RMK: NIL

ARREMETIDA VISUAL RWY 09L: Subir para **6500'**. Manter proa **095**. Aguardar instruções ATC.  
VISUAL GO AROUND RWY 09L: Climb to **6500'**. Maintain heading **095**. Expect ATC instructions.



TO THR 09R (NM)	9.0	5.0	0.0
TO IGH (DME)	9.2	5.1	0.2

	EVNEB	4.0	3.0	2.0	1.0	RW09R	KT	90	110	130	150	170	190
	4090	3776	3457	3139	2820	ALT	FPM	500	600	700	800	900	1000
	1639	1325	1006	688	369	(HGT)	FAF-MAPT	NA					

STRAIGHT-IN	CAT	A	B	C	D	E
	DA / (OCH)	2651' / (200')				2691' / (240')
CAT I	ALS/NO ALS/ RVR ALS (m)	800 / 1200 / 550				
	MDA / (OCH)	NA				
CIRCLING	VIS (m)	NA				

AMDT 2005C 23 APR 20

DEPARTAMENTO DE CONTROLE DO ESPAÇO AÉREO

SBGR\_IAC\_00Y 1/1  
IAC ILS T RWY 09R

CHANGES: RDH, ALT, FIX, MNM.