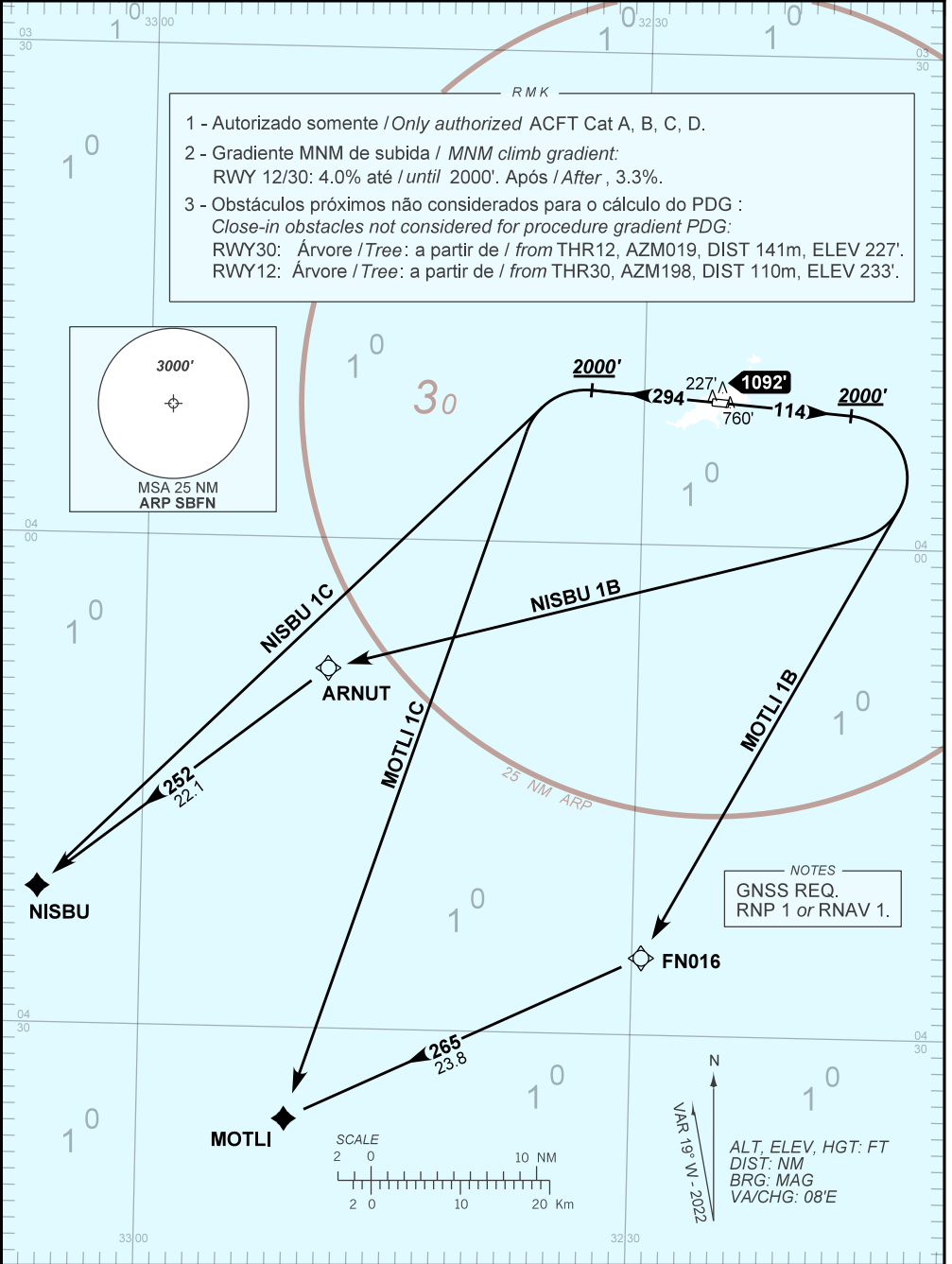
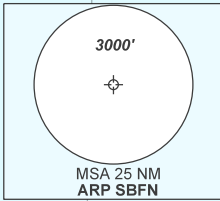


DEPARTAMENTO DE CONTROLE DO ESPAÇO AÉREO

TA 5000'	ATIS NIL	AFIS NORONHA 125.90	APP NIL	ACC RECIFE 128.70 134.80
----------	-------------	------------------------	------------	-----------------------------

- RMK
- 1 - Autorizado somente / Only authorized ACFT Cat A, B, C, D.
 - 2 - Gradiente MNM de subida / MNM climb gradient:
RWY 12/30: 4.0% até / until 2000'. Após / After, 3.3%.
 - 3 - Obstáculos próximos não considerados para o cálculo do PDG :
Close-in obstacles not considered for procedure gradient PDG:
RWY30: Árvore / Tree: a partir de / from THR12, AZM019, DIST 141m, ELEV 227'.
RWY12: Árvore / Tree: a partir de / from THR30, AZM198, DIST 110m, ELEV 233'.



CHANGES: ATIS: WPT.