

**INSTRUMENT APPROACH
CHART (IAC)**

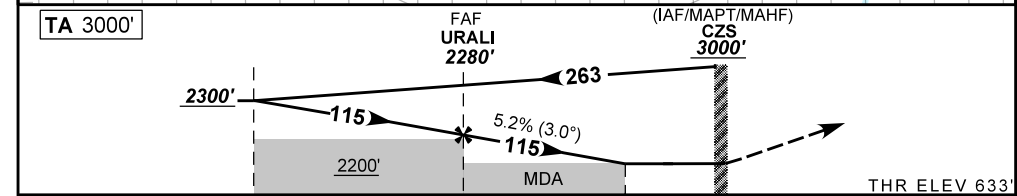
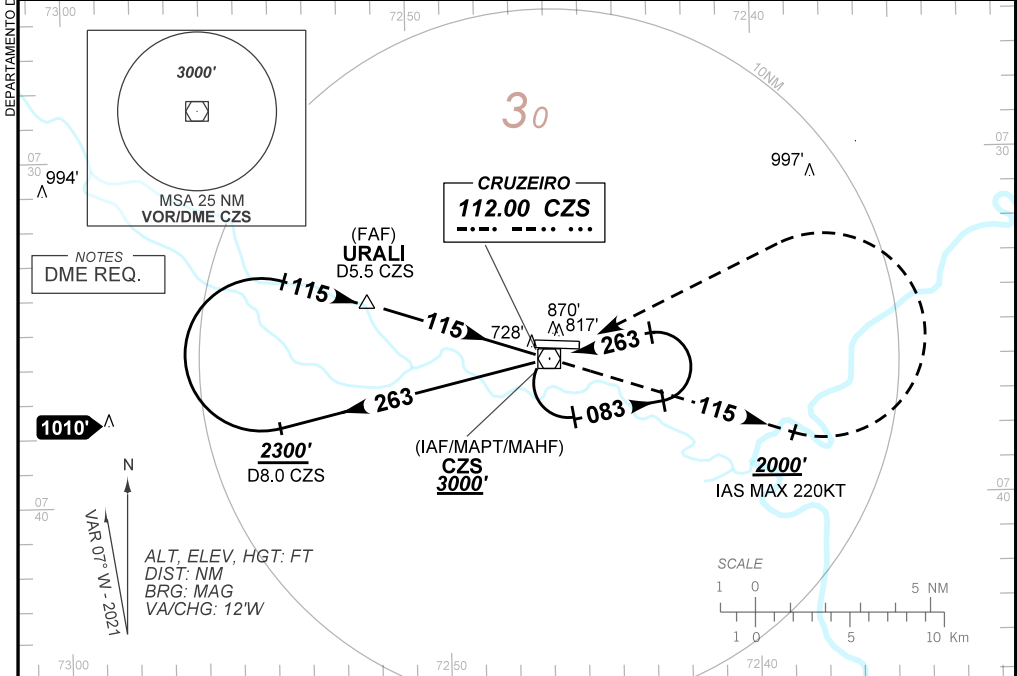
CRUZEIRO DO SUL / Cruzeiro do Sul, INTL (SBCZ)

AD ELEV: 636'

VOR RWY 10

ATIS NIL	APP NIL	AFIS CRUZEIRO 125.70	GNDC NIL
VOR CZS 112.00 MHz	FINAL CRS 115°	FAF: 2280'	N/A
APCH Perdida: 1) Subir para 3000' . Manter proa 115 até cruzar 2000' . Então, curvar à ESQUERDA direto VOR CZS para espera. 2) IAS MAX 220KT		VOR MDA / (OCH): 1070' / (440')	
Missed APCH: 1) Climb to 3000' . Maintain heading 115 until passing 2000' . Then, turn LEFT direct to CZS VOR for holding. 2) IAS MAX 220KT			

RMK: NIL.



TO THR 10 (NM)	7.5	5.0	1.2	0.0
TO CZS (NM)	8.0	5.5	1.7	0.5

URALI	4.0	3.0	2.0	1.2	RWY10	KT	090	110	130	150	170	190
2280	1960	1641	1323	1070	ALT	FPM	500	600	700	800	900	1000
1650	1324	1005	687	440	(HGT)	FAF-MAPT	NA					

STRAIGHT-IN	CAT	A	B	C	D	E
VOR	MDA / (OCH)	1070' / (440')				
	ALS/NO ALS/ RVR ALS (m)	NIL / 1600 / NIL		NIL / 2000 / NIL		
CIRCLING	MDA / (OCH)	NA				
	VIS (m)	NA				