

**INSTRUMENT APPROACH  
CHART (IAC)**

**ARAÇATUBA / Araçatuba (SBAU)**

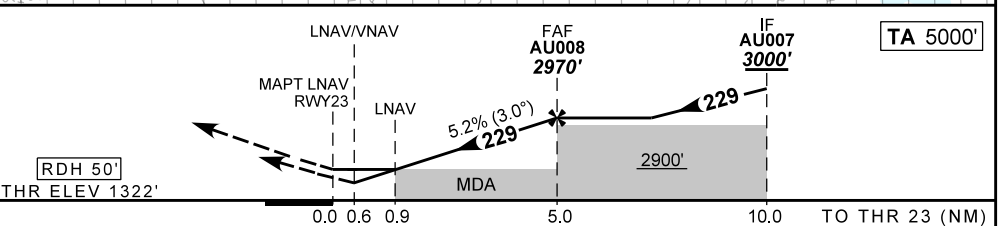
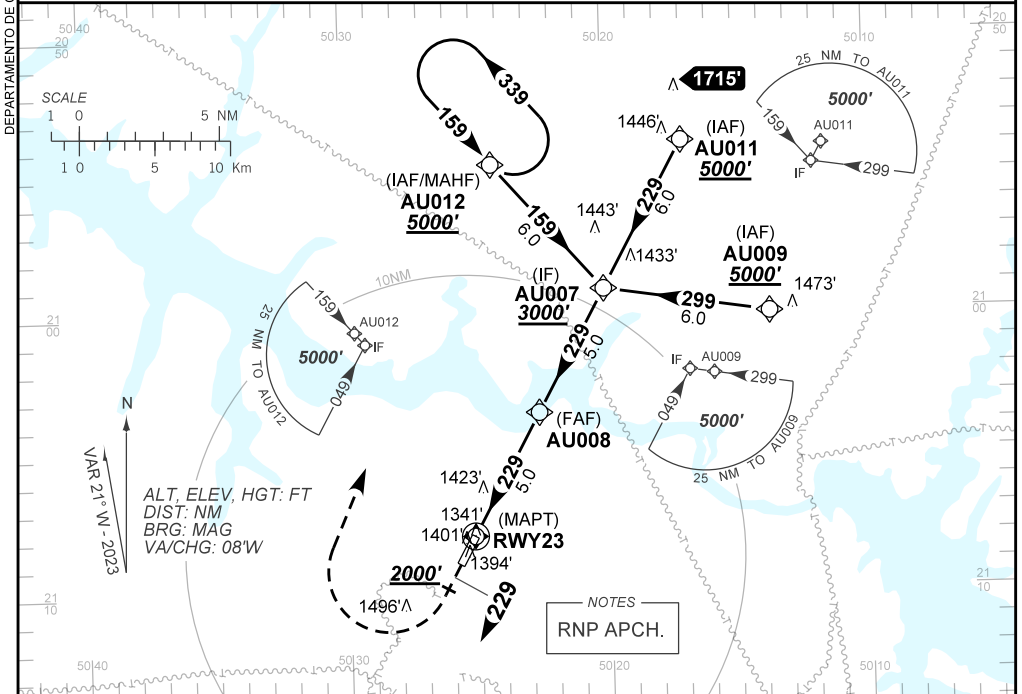
**AD ELEV: 1358'**

**RNP RWY 23**

ATIS NIL	APP NIL	AFIS ARAÇATUBA 130.60	GNDC NIL
TEMP LNAV/VNAV MIN 0°C / MAX 50 °C	FINAL CRS 229°	FAF: 2970'	LNAV/VNAV DA / (OCH): 1572' / (250')
			LNAV MDA / (OCH): 1670' / (350')

APCH Perdida: Subir para **5000'**. Manter rumo **229** até cruzar **2000'**. Após, curvar à DIREITA direto AU012 para espera.

Missed APCH: Climb to **5000'**. Maintain course **229** until passing **2000'**. After, turn RIGHT direct AU012 for holding.



RWY23	0.9	2.0	3.0	4.0	AU008		Ground Speed (KT)	090	110	130	150	170	190
ALT	1670	2009	2327	2646	2970		FPM	500	600	700	800	900	NA
(HGT)	350	687	1005	1324	1648		FAF-MAPT				NA		

STRAIGHT-IN	CAT	A	B	C	D	E
	DA / (OCH)	1572' / (250')				
LNAV/VNAV	ALS / NO ALS / RVR ALS (m)	NIL / 1300 / NIL				
	MDA / (OCH)	1670' / (350')				
LNAV	ALS / NO ALS / RVR ALS (m)	NIL / 1600 / NIL				
	MDA / (OCH)	NA				
CIRCLING	MDA / (OCH)	NA				
	VIS (m)	NA				

CHANGES: AD ELEV, LAYOUT, VAR.