

**INSTRUMENT APPROACH  
CHART (IAC)**

**PATO BRANCO / Juvenal Loureiro Cardoso (SBPO)**

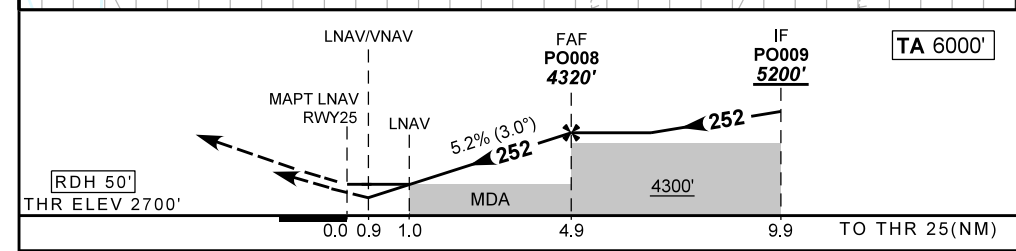
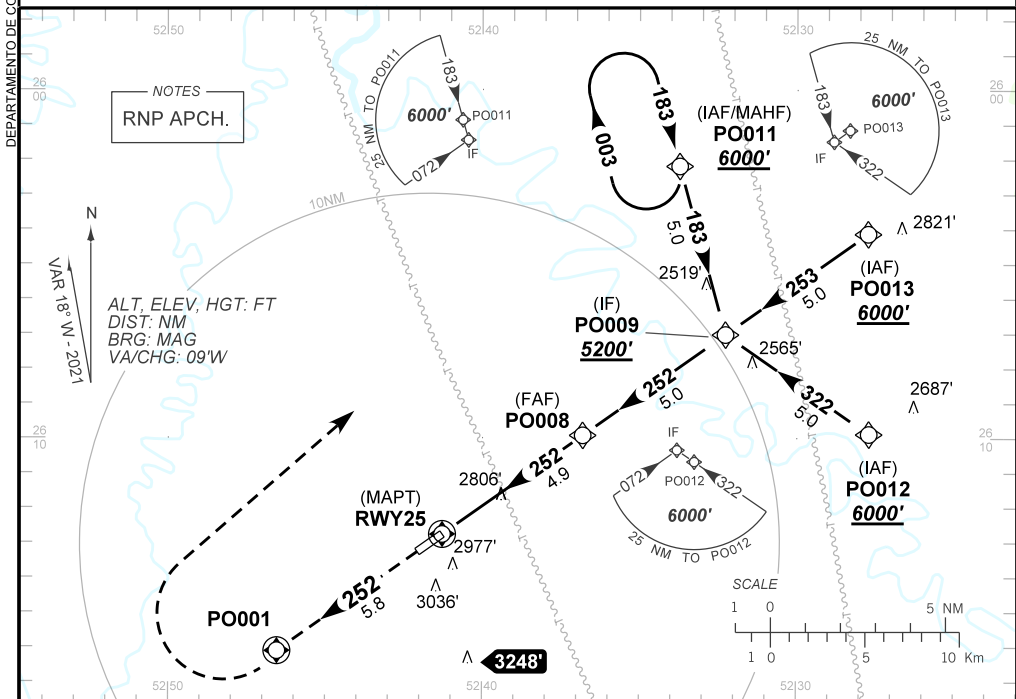
**AD ELEV: 2700'**

**RNP RWY 25**

ATIS NIL	APP NIL	AFIS PATO BRANCO 130.80	GNDC NIL
-------------	------------	----------------------------	-------------

TEMP LNAV/VNAV <b>MIN -10°C / MAX 50°C</b>	FINAL CRS <b>252°</b>	FAF: <b>4320'</b>	LNAV/VNAV DA / (OCH): <b>3039' / (339')</b>	LNAV MDA / (OCH): <b>3060' / (360')</b>
---	--------------------------	----------------------	--	--

APCH Perdida: Subir para **6000'**. Manter rumo **252** até PO001. Após, curvar a DIREITA direto PO011 para espera.  
Missed APCH: Climb to **6000'**. Maintain course **252** until PO001. After, turn RIGHT direct to PO011 for holding.



RWY25	1.0	2.0	3.0	4.0	PO008	Ground Speed (KT)	090	110	130	150	170	190
ALT	3060	3387	3705	4024	4320	FPM	500	600	700	800	900	NA
(HGT)	360	687	1005	1324	1620	FAF-MAPT	NIL					

STRAIGHT-IN	CAT	A	B	C	D	E	
	DA / (OCH)	3039' / (339')					NA
LNAV/VNAV	ALS/NO ALS/ RVR ALS (m)	NIL / 1500 / NIL					
	MDA / (OCH)	3060' / (360')					
LNAV	ALS/NO ALS/ RVR ALS (m)	NIL / 1600 / NIL					
	MDA / (OCH)	NA					
CIRCLING	MDA / (OCH)	NA					
	VIS (m)	NA					