

**INSTRUMENT APPROACH  
CHART (IAC)**

**SÃO PAULO / Guarulhos - Gov. André Franco Montoro, INTL (SBGR)**

**AD ELEV: 2461'**

**RNP V RWY 27R**

DEPARTAMENTO DE CONTROLE DO ESPAÇO AÉREO

D-ATIS <b>127.75</b>	APP SÃO PAULO <b>119.15 120.25 120.85 123.25 129.00 129.75</b>	TWR GUARULHOS <b>118.40 132.75 135.20</b>	GNDC GUARULHOS <b>121.70 126.90</b>
-------------------------	---	--	--

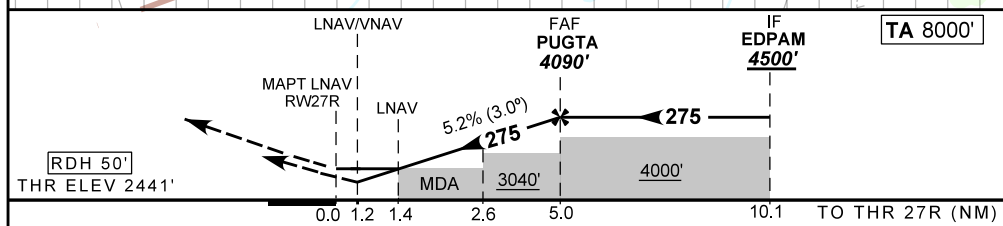
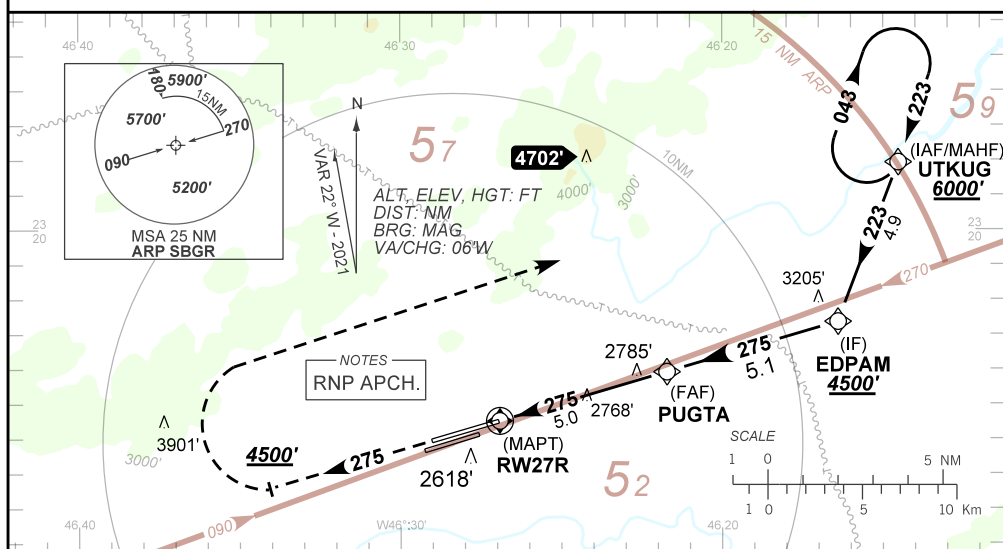
TEMP LNAV/VNAV <b>MIN -10° C / MAX 50° C</b>	FINAL CRS <b>275°</b>	FAF: <b>4090'</b>	LNAV/VNAV DA / (OCH): <b>2857' / (416')</b>	LNAV MDA / (OCH): <b>2930' / (490')</b>
---	--------------------------	----------------------	--	--

APCH Perdida: Subir para **6000'**. Manter rumo **275** até **4500'**. Após, curvar à DIREITA direto UTKUG para espera.

Missed APCH: Climb to **6000'**. Mantain course **275** until **4500'**. Then, turn RIGHT direct to UTKUG for holding.

RMK: **NIL.**

ARREMETIDA VISUAL RWY27L: Subir para **6000'**. Manter proa **275** até **3400'**. Após, curvar à ESQUERDA proa **105** e aguardar instruções ATC.  
VISUAL GO AROUND RWY 27L: Climb to **6000'**. Maitaing heading **275** until **3400'**. Then, turn LEFT heading **105** and expect ATC instructions.



RWY27R	1.2	2.0	3.0	4.0	PUGTA		KT	90	110	130	150	170	190
ALT	2857	3128	3447	3765	4090		FPM	500	600	700	800	900	1000
(HGT)	416	687	1006	1324	1649		FAF-MAPT 5NM	NIL					

STRAIGHT-IN	CAT	A	B	C	D	E
LNAV/VNAV	DA / (OCH)	2857' / (416')				NA
	ALS/NO ALS/ RVR ALS (m)	1200 / 1900 / NIL				
LNAV	MDA / (OCH)	2930' / (490')				
	ALS/NO ALS/ RVR ALS (m)	1200 / 1900 / NIL		1500 / 2300 / NIL		
CIRCLING	MDA / (OCH)	NA				
	VIS (m)	NA				

CHANGES: NEW CHART.