

**INSTRUMENT APPROACH
CHART (IAC)**

BELO HORIZONTE / Tancredo Neves, INTL (SBCF)

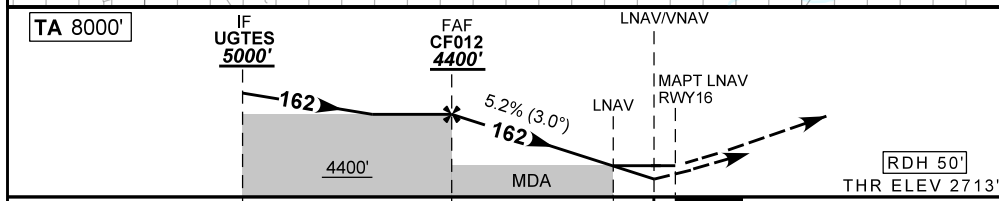
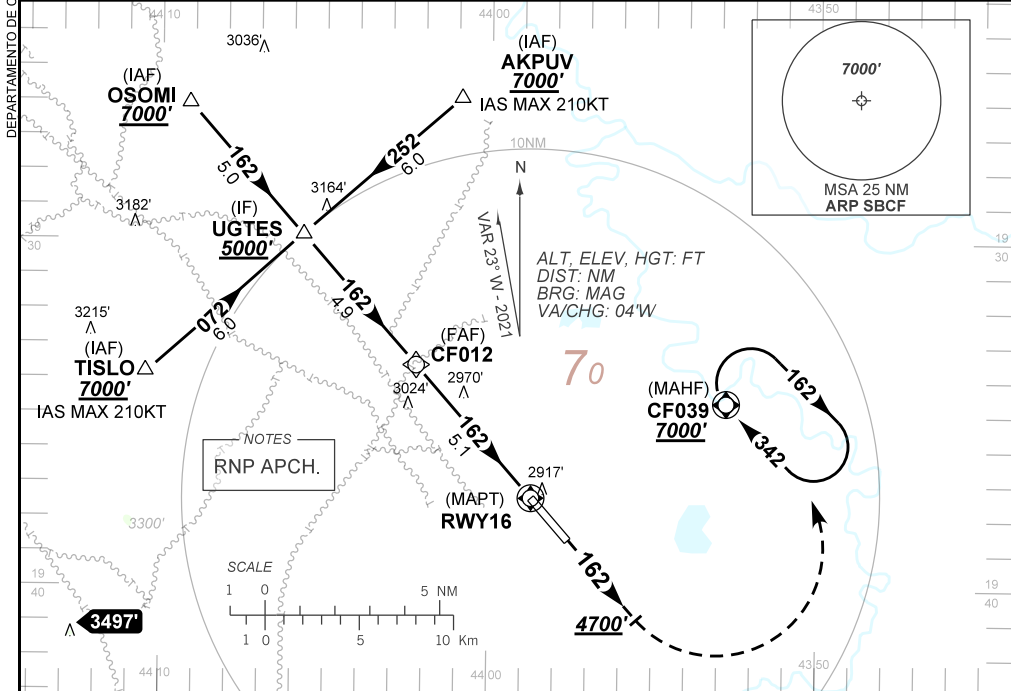
AD ELEV: 2721'

RNP RWY 16

D-ATIS 127.85	APP BELO HORIZONTE 119.10 119.30 119.65 120.20 128.55 129.10 129.40	TWR CONFINES 118.20	GND C CONFINES 121.90
-------------------------	---	-------------------------------	---------------------------------

TEMP LNAV/VNAV MIN 0°C / MAX 40°C	FINAL CRS 162°	FAF: 4400'	LNAV/VNAV DA / (OCH): 3083' / (370')	LNAV MDA / (OCH): 3270' / (560')
---	--------------------------	----------------------	--	--

APCH Perdida: 1) Subir para **7000'**. Manter rumo **162** até **4700'**, após curvar à ESQUERDA para espera em CF039. 2) IAS MAX 210KT na espera.
Missed APCH: Climb to **7000'**. Maintain course **162** until **4700'**, after turn LEFT for holding CF039.2) IAS MAX 210KT in holding



TO THR 16 (NM)	10.0	5.1	1.6	1.0	0.0
----------------	------	-----	-----	-----	-----

CF012	4.0	3.0	2.0	1.6	RWY 16	Ground Speed (KT)	090	110	130	150	170	190
4400	4037	3718	3400	3270	ALT	FPM	500	600	700	800	900	NA
1687	1324	1005	687	560	(HGT)	FAF-MAPT	NIL					

STRAIGHT-IN	CAT	A	B	C	D	E	
LNAV/VNAV	DA / (OCH)	3083' / (370')					NA
	ALS/NO ALS/ RVR ALS (m)	1000 / 1700 / NIL					
LNAV	MDA / (OCH)	3270' / (560')			1800 / 2500 / NIL		
	ALS/NO ALS/ RVR ALS (m)	1000 / 1700 / NIL			1800 / 2500 / NIL		
CIRCLING	MDA / (OCH)	NA					
	VIS (m)						

CHANGES: LAYOUT, PROC.