

INSTRUMENT APPROACH CHART (IAC)

RIO DE JANEIRO / Galeão - Antônio Carlos Jobim, INTL (SBGL)

AD ELEV: 28'

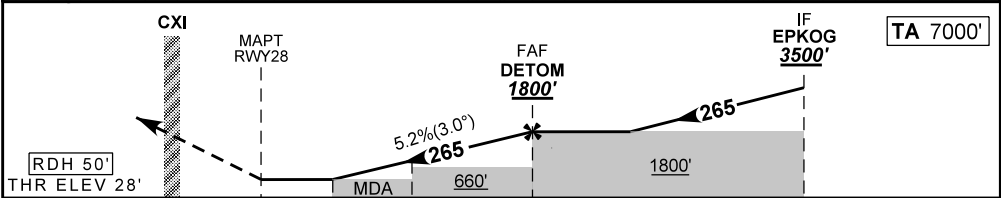
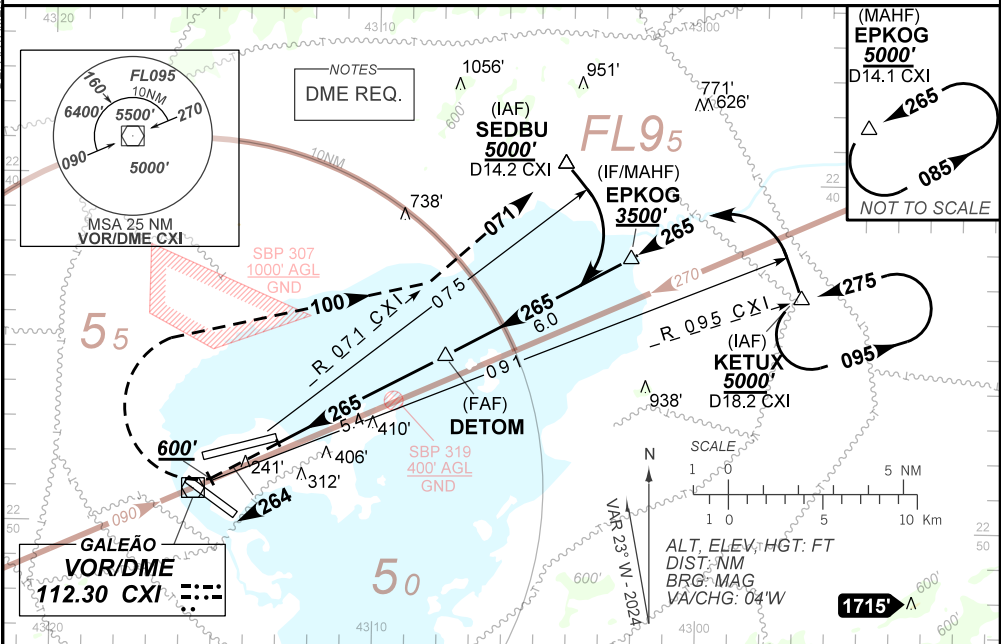
VOR Z RWY 28

D-ATIS 127.60	APP RIO 128.90 119.725 119.00 129.80 129.20 134.40 121.25 124.95 134.95 119.35			TWR GALEÃO 118.00 118.20	GNDC GALEÃO 121.65 128.35
VOR CXI 112.30 MHz	FINAL CRS 265°	FAF: 1800'	VOR MDA / (OCH): 570' / (550')	N/A	

APCH Perdida: 1) Subir para **5000'**. Manter proa **264** até cruzar **600'**. Após, curvar à DIREITA, proa **100** para interceptar a RDL **071** do VOR CXI até SEDBU e ingressar no arco DME 14.2 CXI para espera em EPKOG. 2) IAS MAX 210KT.

Missed APCH: 1) Climb to **5000'**. Maintain heading **264** until passing **600'**. Then, turn RIGHT, heading **100** to intercept RDL **071** CXI VOR until SEDBU to join 14.2 DME CXI arc for holding at EPKOG. 2) IAS MAX 210KT.

DEPARTAMENTO DE CONTROLE DO ESPAÇO AÉREO



	0.0	1.6	2.2	5.4	11.4	TO THR 28 (NM)
	2.7	4.3	4.9	8.1	14.1	TO CXI (DME)

RWY28	1.6	2.2	3.0	4.0	DETOM		Ground Speed (KT)	090	110	130	150	170	190
ALT	570	777	1033	1352	1800		FPM	500	600	700	800	900	1000
(HGT)	550	749	1005	1324	1772		FAF-MAPT	NA					

STRAIGHT-IN	CAT	A	B	C	D	E
	MDA / (OCH)	570' / (550')				
VOR	ALS/NO ALS/ RVR ALS (m)	1200 / 1600 / NIL			2100 / 2500 / NIL	
CIRCLING	MDA / (OCH)	NA				
	VIS (m)					

CHANGES: HDG LAYOUT, MSA, OBST, VAR.