

INSTRUMENT APPROACH
CHART (IAC)

ALTA FLORESTA / Aeroporto Piloto Osvaldo Marques Dias (SBAT)

AD ELEV: 948'

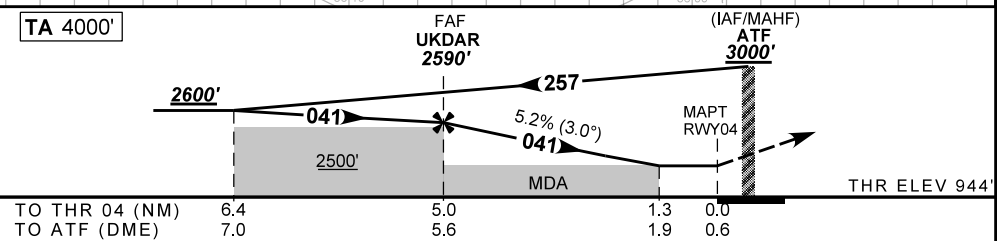
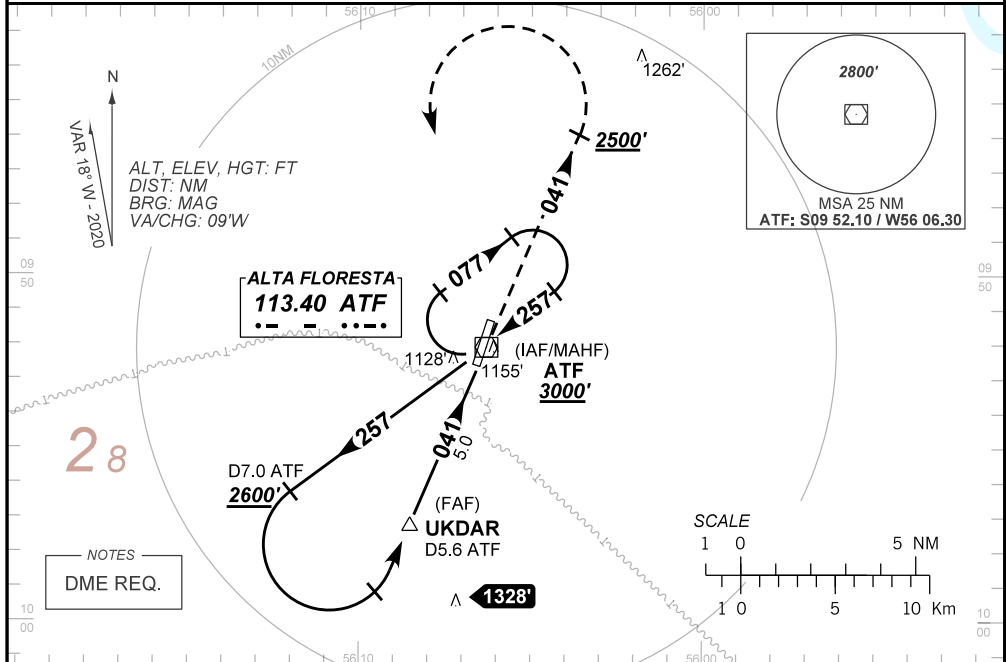
VOR X RWY 04

ATIS NIL	APP NIL	AFIS FLORESTA 126.60	GNDC NIL
VOR ATF 113.40	FINAL CRS 041°	FAF: 2590'	N/A
VOR MDA / (OCH): 1410' / (470')			

APCH Perdida: Subir para 3000'. Manter a RDL 041 do VOR ATF até 2500'. Então, curvar à ESQUERDA direto VOR ATF para espera.

Missed APCH: Climb to 3000'. Maintain 041 RDL ATF VOR until 2500'. Then, turn LEFT direct to ATF VOR for holding.

RMK: NIL



TO THR 04 (NM)	6.4	5.0	1.3	0.0
TO ATF (DME)	7.0	5.6	1.9	0.6

	UKDAR	4.0	3.0	2.0	1.3	RWY04	KT	090	110	130	150	170	190
	2590	2269	1950	1632	1410	ALT	FPM	500	600	700	800	900	1000
	1642	1321	1002	684	470	(HGT)	FAF-MAPT	NA					
STRAIGHT-IN	CAT	A		B		C		D		E			
VOR	MDA / (OCH)	1410' / (470')						NA					
	ALS/NO ALS/ RVR ALS (m)	NIL / 1600 / NIL						NIL / 2200 / NIL					
CIRCLING	MDA / (OCH)	NA						NA					
	VIS (m)	NA						NA					

CHANGES: IDENT, MDA, PROC, VIS.