

DEPARTURE CHART
INSTRUMENT (SID)

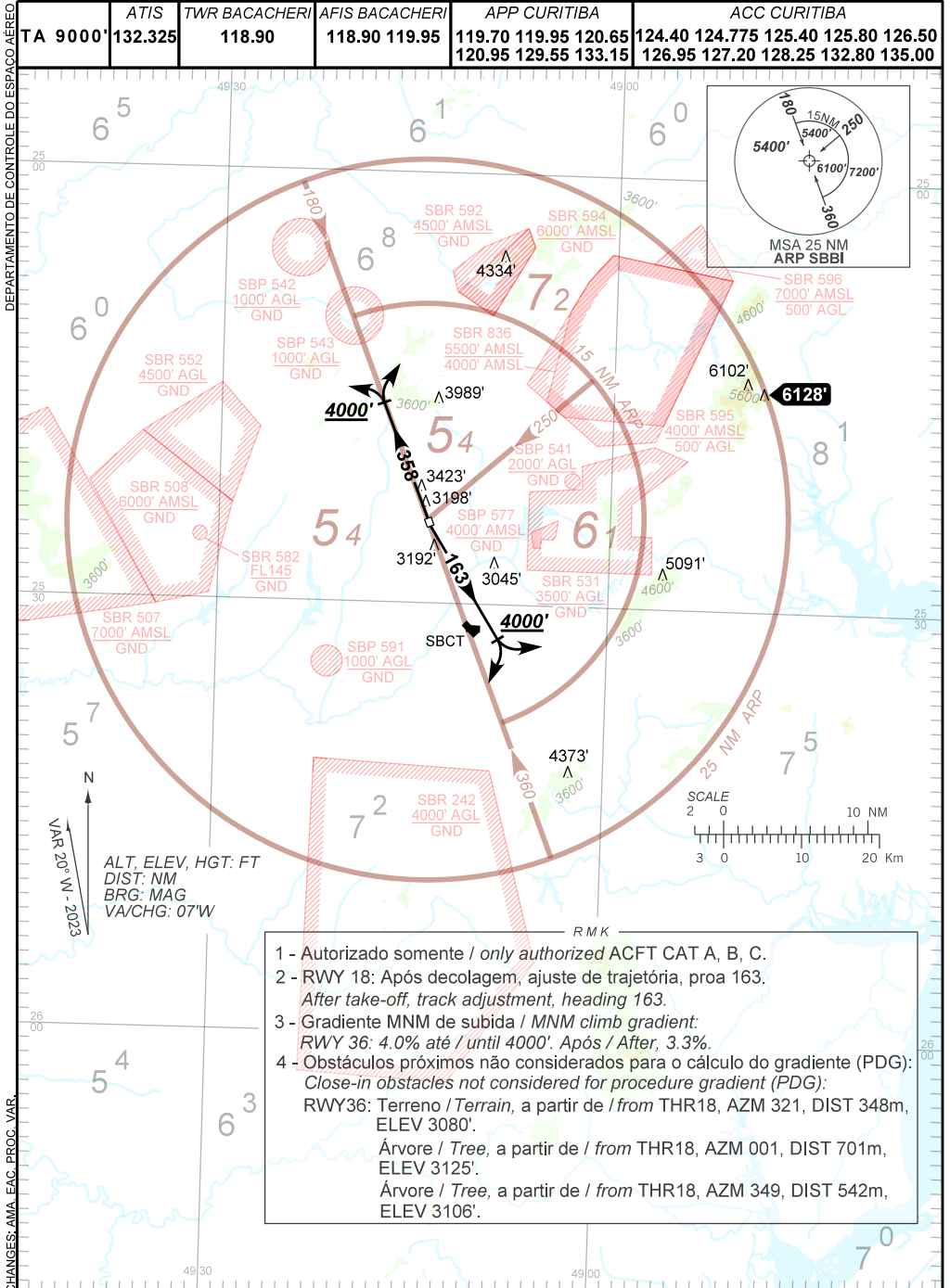
CURITIBA / Bacacheri (SBBI)

RWY 18/36

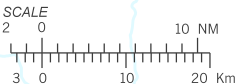
OMNI

AD ELEV: 3059'

TA 9000'	ATIS 132.325	TWR BACACHERI 118.90	AFIS BACACHERI 118.90 119.95	APP CURITIBA 119.70 119.95 120.65 120.95 129.55 133.15	ACC CURITIBA 124.40 124.775 125.40 125.80 126.50 126.95 127.20 128.25 132.80 135.00
----------	--------------	----------------------	------------------------------	---	--



ALT, ELEV, HGT: FT
DIST: NM
BRG: MAG
VA/CHG: 07'W



- 1 - Autorizado somente / only authorized ACFT CAT A, B, C.
- 2 - RWY 18: Após decolagem, ajuste de trajetória, proa 163.
After take-off, track adjustment, heading 163.
- 3 - Gradiente MNM de subida / MNM climb gradient:
RWY 36: 4.0% até / until 4000'. Após / After, 3.3%.
- 4 - Obstáculos próximos não considerados para o cálculo do gradiente (PDG):
Close-in obstacles not considered for procedure gradient (PDG):
RWY36: Terreno / Terrain, a partir de / from THR18, AZM 321, DIST 348m, ELEV 3080'.
Árvore / Tree, a partir de / from THR18, AZM 001, DIST 701m, ELEV 3125'.
Árvore / Tree, a partir de / from THR18, AZM 349, DIST 542m, ELEV 3106'.