

INSTRUMENT APPROACH CHART (IAC)

RIO DE JANEIRO / Santa Cruz, MIL (SBSC)

**USO EXCLUSIVO ACFT MILITARES
MILITARY ACFT ONLY**

PAR X RWY 05

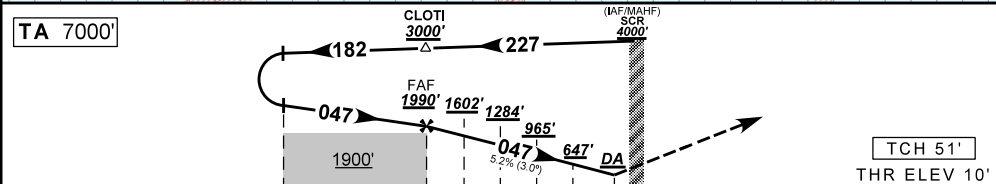
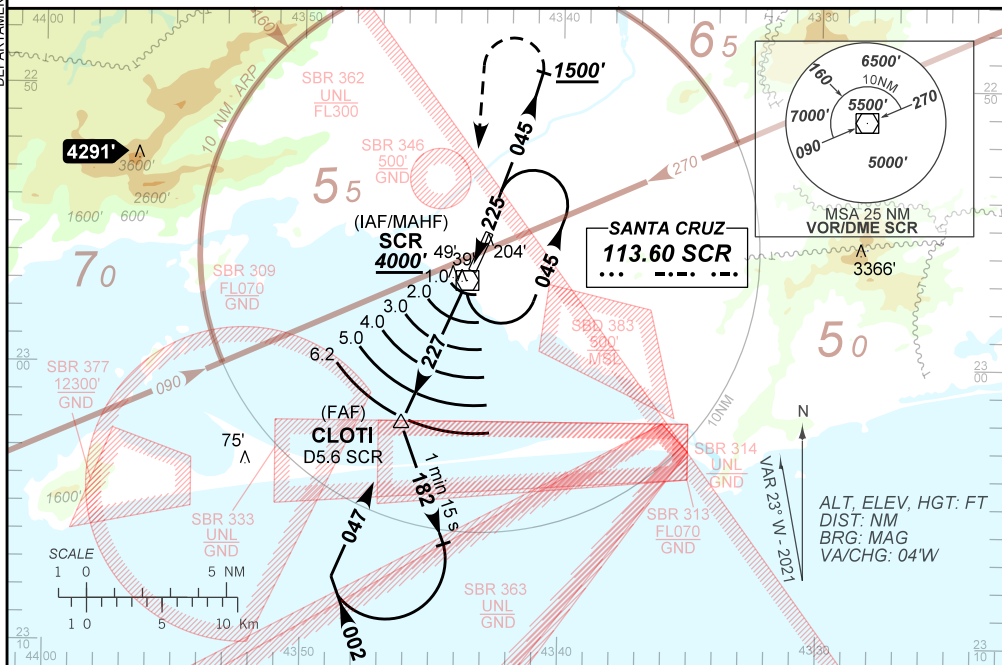
AD ELEV: 10'

ATIS NIL	APP RIO 133.70 132.50 134.40 121.25 119.00 120.55 124.95 134.95 129.80 125.95	PAR SANTA CRUZ 132.20	TWR SANTA CRUZ 118.80 122.90	GND C SANTA CRUZ 121.80
VOR SCR 113.60 MHz	FINAL CRS 047°	FAF: 1990'	PAR DA / (OCH): 210' / (200')	N/A

APCH Perdida: 1) Subir para **4000'**. Curvar à ESQUERDA na proa **045** até passar **1500'**. Após, curvar à ESQUERDA direto SCR para espera. 2) IAS MAX 240KT.
Missed APCH: 1) Climb to **4000'**. Turn LEFT heading **045** until passing **1500'**. Then, turn LEFT direct to SCR for holding. 2) MAX IAS 240KT.

RMK: NIL.

DEPARTAMENTO DE CONTROLE DO ESPAÇO AEREO



TO TD 05 (NM) TCH 51'
THR ELEV 10'

CLOTI	5.0	4.0	3.0	2.0	0.7	TD 05	Ground Speed (KT)	90	110	130	150	170	190
1990	1602	1284	965	647	210	ALT	FPM	500	600	700	800	900	1000
1980	1592	1274	955	637	200	(HGT)	FAF-MAPT	NA					

STRAIGHT-IN	CAT	A	B	C	D	E
PAR	DA / (OCH)	210' / (200')				
	ALS/NO ALS/ RVR ALS (m)	NIL / 1200' / NIL				
CIRCLING	MDA / (OCH)	NA				
	VIS (m)	NA				

CHANGES: DA, FREQ, MNM, OPR, PROFILE, PROC.