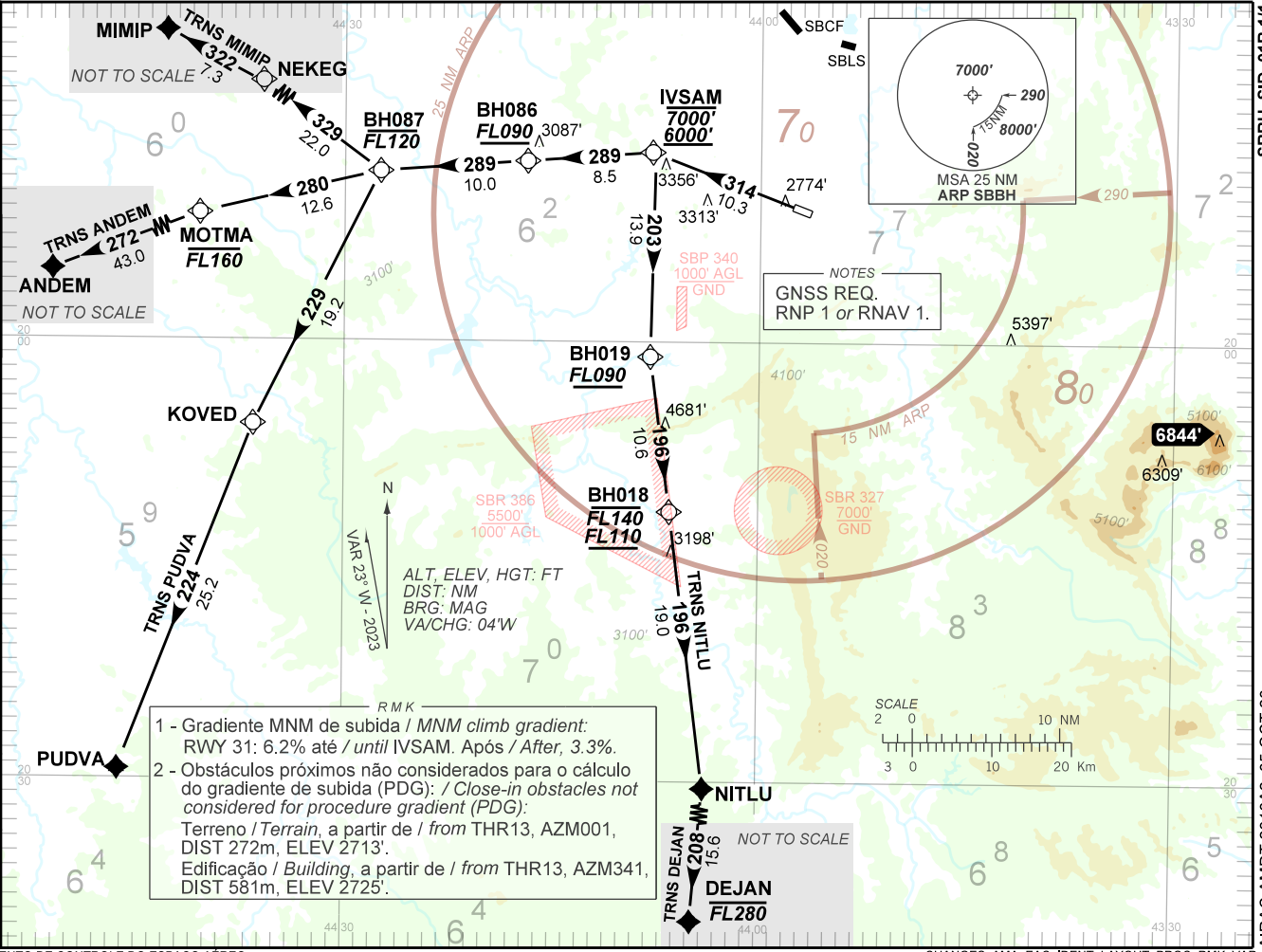


BELO HORIZONTE / Pampulha - Carlos Drummond de Andrade (SBBH)  
RWY 31

STANDARD DEPARTURE  
CHART INSTRUMENT(SID)  
AD ELEV: 2589'

ATIS	127.45	TWR BELO HORIZONTE	118.00
TA	8000'	APP BELO HORIZONTE	119.10 119.30 119.65 120.20
		ACC BRASÍLIA	123.00 124.80
		ACC CURITIBA	124.00 125.35 128.25
		RNAV IVSAM 2A	127.00 135.55



1 - Gradiente MNM de subida / MNM climb gradient:  
RWY 31: 6.2% até / until IVSAM. Após / After, 3.3%.

2 - Obstáculos próximos não considerados para o cálculo do gradiente de subida (PDG): / Close-in obstacles not considered for procedure gradient (PDG):  
Terreno / Terrain, a partir de / from THR13, AZM001, DIST 272m, ELEV 2713'.  
Edificação / Building, a partir de / from THR13, AZM341, DIST 581m, ELEV 2725'.

SBBH\_SID\_01R/1/1  
AIRAC AMDT 2310A2 05 OCT 23