

**INSTRUMENT APPROACH
CHART (IAC)**

SÃO GONÇALO DO AMARANTE / Gov. Aluizio Alves, INTL (SBSG)

AD ELEV: 272'

ILS Z or LOC Z RWY 12

D-ATIS 127.60	APP NATAL 119.30 119.65 120.65 129.80	TWR SÃO GONÇALO 118.20 118.85	GNDC SÃO GONÇALO 121.70
-------------------------	---	---	-----------------------------------

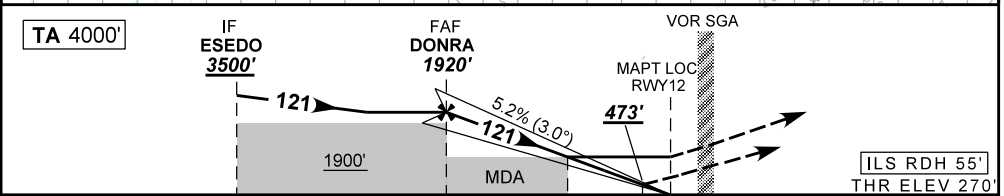
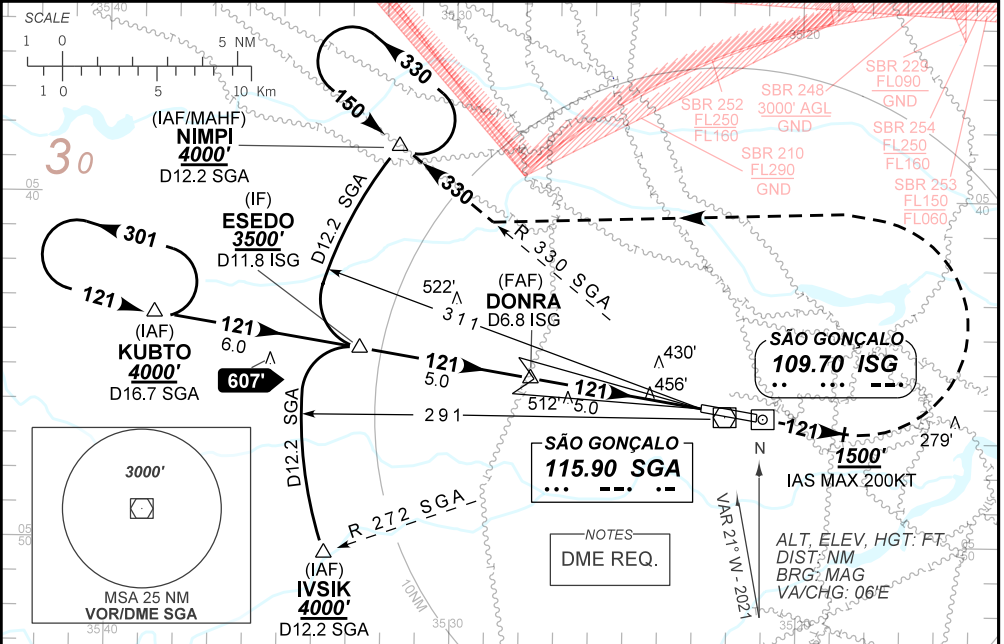
LOC ISG 109.70 MHz	FINAL CRS 121°	FAF: 1920'	CAT I DA / (OCH): 473' / (203')	LOC MDA / (OCH): 760' / (490')
------------------------------	--------------------------	----------------------	---	--

APCH Perdida: 1) Subir para **4000'**. Manter proa **121** até **1500'**. Após, curvar à **ESQUERDA** para interceptar RDL **330** do VOR SGA até NIMPI para espera. 2) Proibido rebloqueio do VOR SGA.

Missed APCH: 1) Climb to **4000'**. Maintain heading **121** until **1500'**. After, turn **LEFT** to intercept **330** RDL SGA VOR until NIMPI for holding. 2) Overflight of SGA VOR is forbidden.

RMK: (*)VIS RVR ALS 550m para APCH utilizando Diretor de Voo, Piloto Automático ou Head-Up Display (HUD).
(*)VIS RVR ALS 550m for APCH using a Flight Director, Autopilot or Head-Up Display (HUD).

DEPARTAMENTO DE CONTROLE DO ESPAÇO AEREO



TO THR 12 (NM)	10.0	5.0	1.4	0.5	0.0
TO ISG (DME)	11.8	6.8	3.2	2.3	1.8

	DONRA	4.0	3.0	2.0	1.4	RWY12	Ground Speed (KT)	090	110	130	150	170	190
		1920	1599	1280	962	760	FPM	500	600	700	800	900	NA
		1650	1329	1010	692	490	(HGT)	FAF-MAPT	NA				

STRAIGHT-IN	CAT	A	B	C	D	E
	DA / (OCH)	473' / (203')				
LOC	ALS/NO ALS/ RVR ALS (m)	800 / 1200 / 700 (*)				
	MDA / (OCH)	760' / (490')				
CIRCLING	ALS/NO ALS/ RVR ALS (m)	800 / 1600 / 700		1500 / 2300 / 1400		
	MDA / (OCH)	NA				
	VIS (m)	NA				

CHANGES: AD ELEV. EAC. FREQ. LAYOUT. VAR. VIS.