

**INSTRUMENT APPROACH
CHART (IAC)**

SÃO PAULO / Guarulhos - Gov. André Franco Montoro, INTL (SBGR)

AD ELEV: 2461'

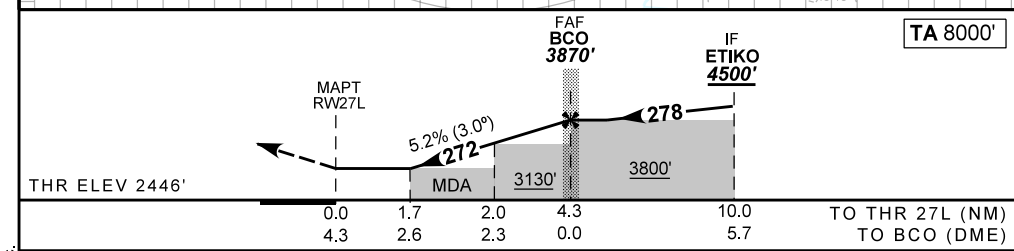
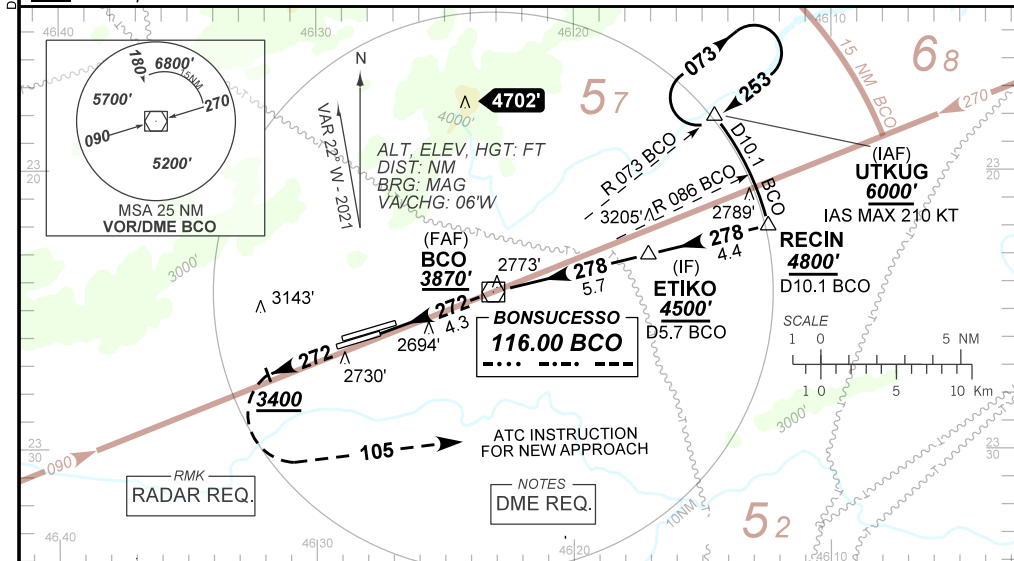
VOR Y RWY 27L

| | | | | | |
|------------------------------|--|----------------------|------------|--|---|
| D-ATIS 127.75 | APP SÃO PAULO 129.75 119.15 129.00 134.90 123.25 | | | TWR GUARULHOS 118.40 132.75 135.20 | GNDCL GUARULHOS 121.70 126.90 |
| VOR BCO 116.00 MHz | FINAL CRS 272° | FAF: 3870' | N/A | VOR MDA / (OCH): 3030' / (590') | |

APCH Perdida: Subir para **6000'**. Manter rumo **272** até cruzar **3400'**. Após, curvar à ESQUERDA na proa **105** e aguardar instruções ATC. IAS MAX 230 KT.
Missed APCH: Climb to **6000'**. Maintain course **272** until passing **3400'**. Then, turn LEFT heading **105** and expect ATC instructions. IAS MAX 230KT.

ARREMETIDA VISUAL RWY27R: Subir para **6000'**. Manter proa **275** até **6000'**. Após, curvar à DIREITA na na proa **085** e aguardar instruções ATC.

VISUAL GO AROUND RWY 27R. Climb to **6000'**. Maintain heading **275** until **6000'**. Then, turn RIGHT heading **085** and expect ATC instructions.



| | | | | | | | | | | |
|--------|------|------|------|------|--|--|--|--|--|--|
| RWY27L | 1.7 | 2.0 | 3.0 | BCO | | | | | | |
| ALT | 3030 | 3133 | 3452 | 3870 | | | | | | |
| (HGT) | 590 | 687 | 1006 | 1424 | | | | | | |

| | | | | | | |
|-------------|-------------------------|------------------|---|---|-------------------|---|
| STRAIGHT-IN | CAT | A | B | C | D | E |
| | MDA / (OCH) | 3030' / (590') | | | | |
| VOR | ALS/NO ALS/ RVR ALS (m) | 800 / 1600 / NIL | | | 2000 / 2700 / NIL | |
| | | | | | | |
| CIRCLING | MDA / (OCH) | NA | | | | |
| | VIS (m) | | | | | |

CHANGES: IDENT, MSA, CHG, VAR, PROC.

DEPARTAMENTO DE CONTROLE DO ESPAÇO AEREO