

**INSTRUMENT APPROACH
CHART (IAC)**

CAMPINAS / Viracopos, INTL (SBKP)

AD ELEV: 2170'

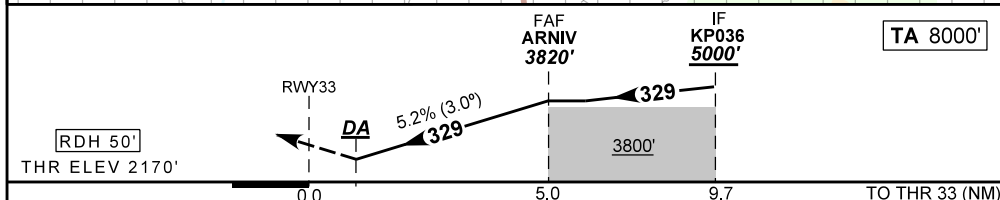
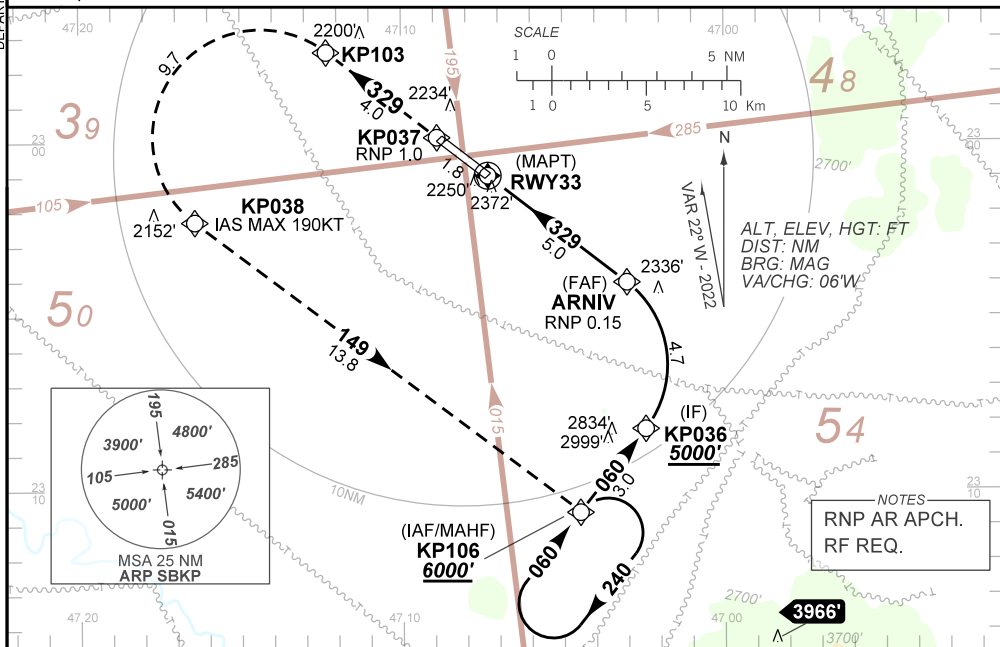
RNP W RWY 33 (AR)

| | | | |
|--------------------------|---|-------------------------------|--------------------------------|
| D-ATIS 127.825 | APP SÃO PAULO 119.05 119.15 119.25 119.60 119.80 120.05 120.25 120.85 121.40 122.75 123.25 124.15 | TWR CAMPINAS 118.25 | GNDC CAMPINAS 121.90 |
|--------------------------|---|-------------------------------|--------------------------------|

| | | | | |
|---|--------------------------|----------------------|--|--|
| TEMP LNAV / VNAV MIN -10° C / MAX 45° C | FINAL CRS 329° | FAF: 3820' | RNP 0.3 DA / (OCH): 2533' / (363') | RNP 0.15 MDA / (OCH): 2420' / (250') |
|---|--------------------------|----------------------|--|--|

APCH Perdida: 1) Subir para **6000'**. Manter rumo **329** até KP103. Após, curvar à ESQUERDA até KP038. Após, rumo **149** até KP106 para espera. 2) IAS MAX 190KT até KP038.
Missed APCH: 1) Climb to **6000'**. Maintain course **329** until KP103. After, turn LEFT until KP038. After, course **149** until KP106 for holding. 2) IAS MAX 190KT until KP038.

RMK: Não efetuar transição para RNP da aproximação perdida antes de 0.63 NM da RWY33.
Do not perform RNP transition of Missed APCH before 0.63 from RWY33.



| | | | | | | | | | | | | |
|-------|------|------|------|------|-------|-------------------|-----|-----|-----|-----|-----|------|
| RWY33 | 1.0 | 2.0 | 3.0 | 4.0 | ARNIV | Ground Speed (KT) | 090 | 110 | 130 | 150 | 170 | 190 |
| ALT | 2533 | 2857 | 3175 | 3494 | 3820 | FPM | 500 | 600 | 700 | 800 | 900 | 1000 |
| (HGT) | 363 | 687 | 1005 | 1324 | 1650 | FAF-MAPT | NA | | | | | |

| STRAIGHT-IN | CAT | A | B | C | D | E |
|-------------|-------------------------|------------------|---|---|---|----|
| RNP 0.15 | DA / (OCH) | 2420' / (250') | | | | NA |
| | ALS/NO ALS/ RVR ALS (m) | NIL / 1300 / NIL | | | | |
| RNP 0.3 | DA / (OCH) | 2533' / (363') | | | | NA |
| | ALS/NO ALS/ RVR ALS (m) | NIL / 1700 / NIL | | | | |

AUTORIZAÇÃO ESPECIAL PARA AERONAVE E TRIPULAÇÃO REQUERIDA
SPECIAL AUTHORIZATION FOR AIRCRAFT AND CREW REQUIRED

DEPARTAMENTO DE CONTROLE DO ESPAÇO AÉREO