

DEPARTURE CHART  
INSTRUMENT (SID)

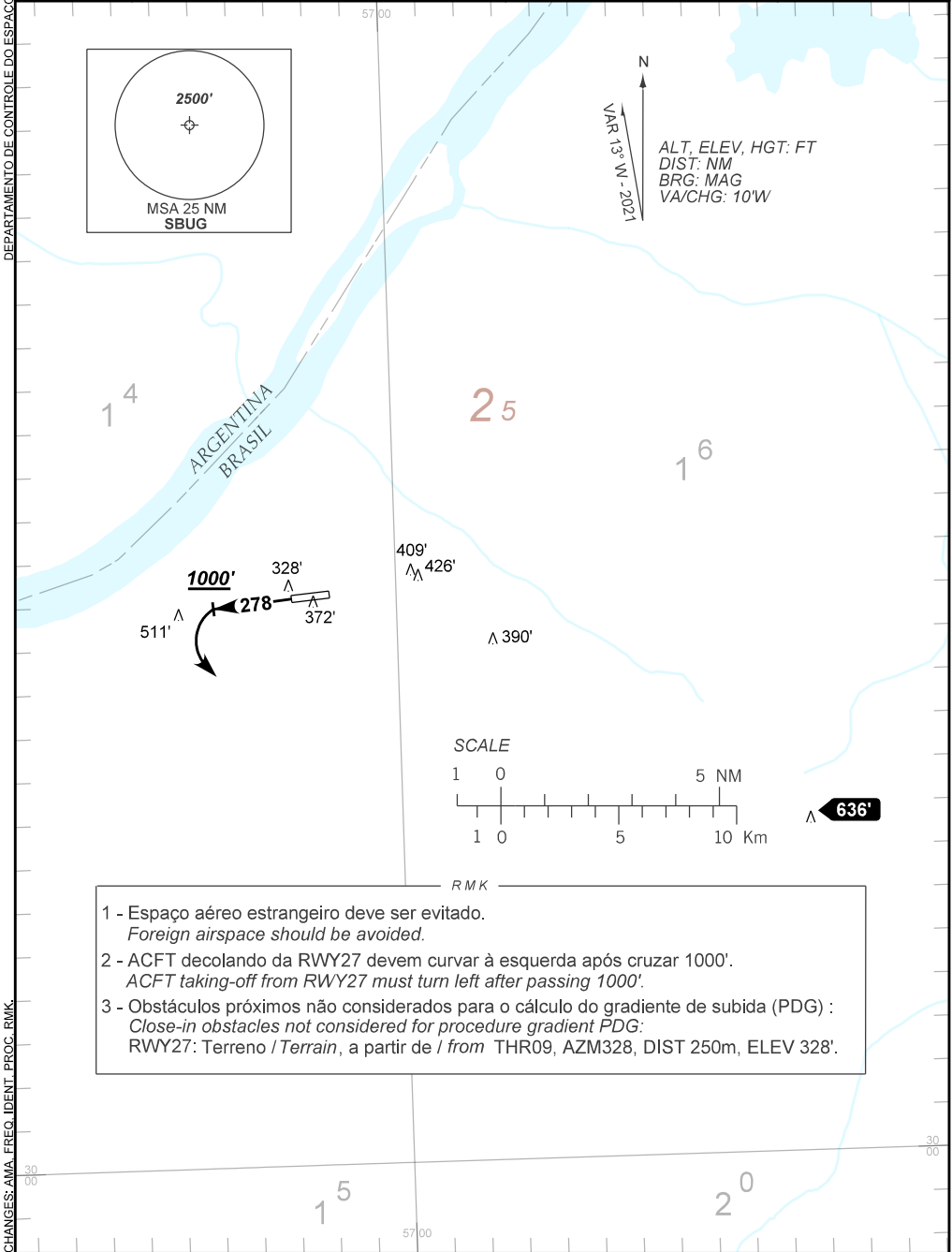
URUGUAIANA / Rubem Berta (SBUG)

RWY 27

AD ELEV: 256'

OMNI

TA 3000'	ATIS NIL	AFIS URUGUAIANA 118.10 125.90	APP PASO DE LOS LIBRES 118.50 120.30	ACC CURITIBA 135.90 123.725
----------	-------------	----------------------------------	---	--------------------------------



- 1 - Espaço aéreo estrangeiro deve ser evitado.  
*Foreign airspace should be avoided.*
- 2 - ACFT decolando da RWY27 devem curvar à esquerda após cruzar 1000'.  
*ACFT taking-off from RWY27 must turn left after passing 1000'.*
- 3 - Obstáculos próximos não considerados para o cálculo do gradiente de subida (PDG) :  
*Close-in obstacles not considered for procedure gradient PDG:*  
RWY27: Terreno / Terrain, a partir de / from THR09, AZM328, DIST 250m, ELEV 328'.

CHANGES: AMA, FREQ, IDENT, PROC, RMK