

INSTRUMENT APPROACH
CHART (IAC)

AD ELEV: 257'

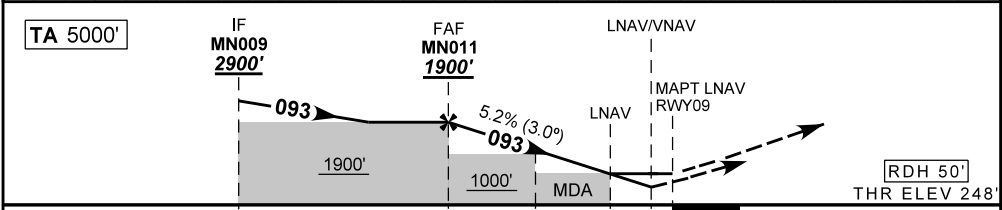
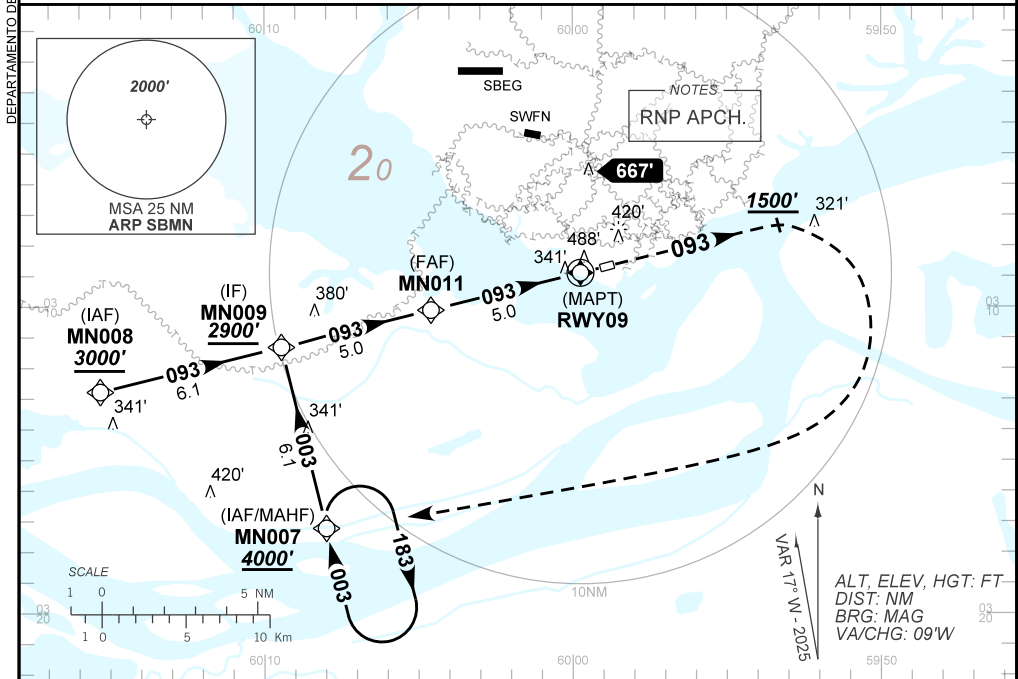
MANAUS / Campo Ponta Pelada, MIL (SBMN)

RNP RWY 09

ATIS NIL	APP MANAUS 119.25 119.70 120.40 129.55 129.80			TWR PONTA PELADA 118.60	GNDC NIL
TEMP LNAV/VNAV MIN 0°C / MAX 50°C	FINAL CRS 093°	FAF: 1900'	LNAV/VNAV DA / (OCH): 667' / (419')	LNAV MDA / (OCH): 740' / (500')	

APCH Perda: Subir para **4000'**. Manter rumo **093°** até **1500'**. Após, curvar à DIREITA para espera no MN007.

Missed APCH: Climb to **4000'**. Maintain course **093°** until **1500'**. After, turn RIGHT for holding at MN007.



TO THR 09 (NM)	10.0	5.0	2.3	1.4	1.2	0.0	THR ELEV 248'
	MN011	4.0	3.0	2.3	1.4	RWY09	Ground Speed (KT)
	1900	1572	1253	1031	740	ALT	090 110 130 150 170 190
	1652	1324	1005	783	500	(HGT)	FPM 500 600 700 800 900 NA
							FAF-MAPT NA

STRAIGHT-IN	CAT	A	B	C	D	E
	DA / (OCH)	667' / (419')				
LNAV / VNAV	ALS/NO ALS/ RVR ALS (m)	NIL / 1900 / NIL				
	MDA / (OCH)	740' / (500')				
LNAV	ALS/NO ALS/ RVR ALS (m)	NIL / 1900 / NIL		NIL / 2300 / NIL		
	MDA / (OCH)	NA				
CIRCLING	MDA / (OCH)	NA				
	VIS (m)	NA				

CHANGES: NIL