

**INSTRUMENT APPROACH  
CHART (IAC)**

**NATAL / Campo Augusto Severo, MIL (SBNT)**

**USO EXCLUSIVO ACFT MILITARES  
MILITARY ACFT ONLY**

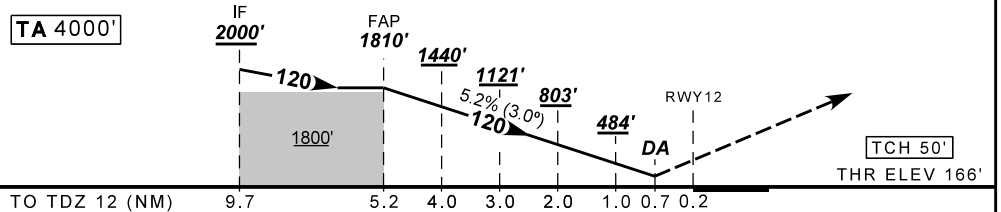
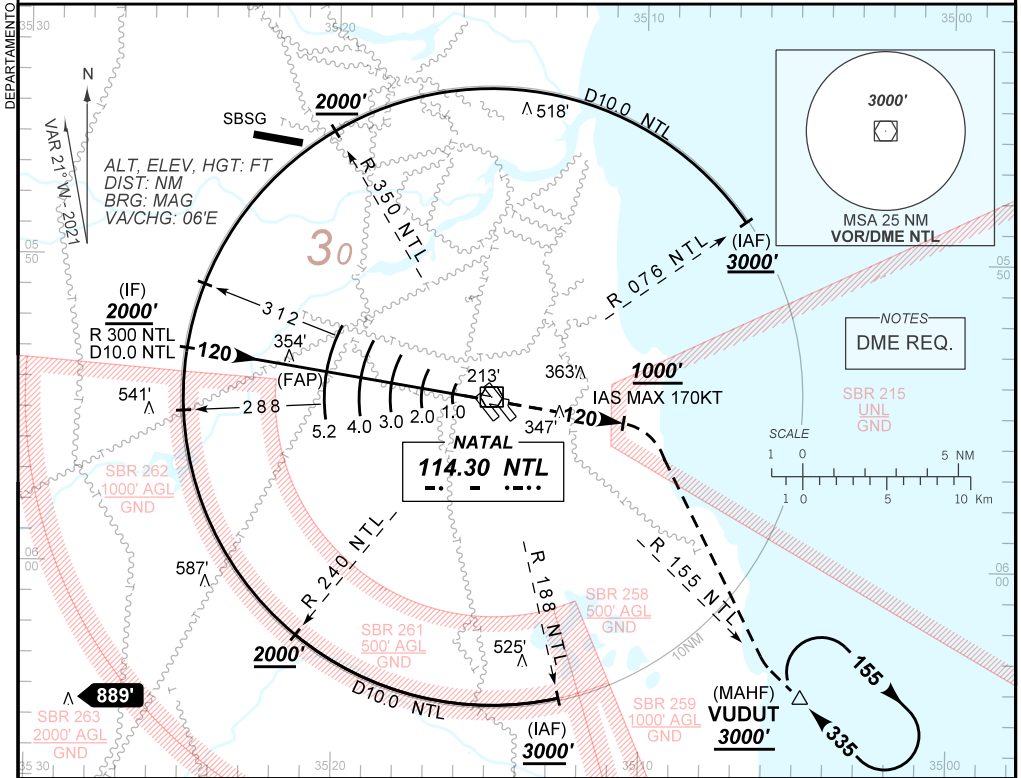
**PAR Z RWY 12**

**AD ELEV: 171'**

|                         |   |  |   |                              |
|-------------------------|---|--|---|------------------------------|
| D-ATIS<br><b>132.65</b> | APP NATAL<br><b>119.30 119.65 120.65 129.80</b> | PAR NATAL<br><b>128.875 132.40 348.65 359.00</b> | TWR NATAL<br><b>118.70 122.80</b>       | GNDCL NATAL<br><b>121.90</b> |
| N/A                     | FINAL CRS<br><b>120°</b>                        | FAP:<br><b>1810'</b>                             | PAR<br>DA / (OCH): <b>392' / (226')</b> | N/A                          |

APCH Perdida: Subir para **3000'**. Manter proa **120** até **1000'**. Após, curvar à DIREITA para interceptar RDL **155** do VOR NTL até VUDUT para espera.

Missed APCH: Climb to **3000'**. Maintain heading **120** until **1000'**. After, turn RIGHT to intercept **155** RDL NTL VOR until VUDUT for holding.



|      |      |      |     |     |     |       |
|------|------|------|-----|-----|-----|-------|
| FAP  | 4.0  | 3.0  | 2.0 | 1.0 | 0.7 | TDZ12 |
| 1810 | 1440 | 1121 | 803 | 484 | 392 | ALT   |
| 1644 | 1274 | 955  | 637 | 318 | 226 | (HGT) |

|                   |     |     |     |     |     |      |
|-------------------|-----|-----|-----|-----|-----|------|
| Ground Speed (KT) | 090 | 110 | 130 | 150 | 170 | 190  |
| FPM               | 500 | 600 | 700 | 800 | 900 | 1000 |
| FAF-MAPT          | NIL |     |     |     |     |      |

|             |                         |                  |   |   |   |   |
|-------------|-------------------------|------------------|---|---|---|---|
| STRAIGHT-IN | CAT                     | A                | B | C | D | E |
| PAR         | DA / (OCH)              | 392' / (226')    |   |   |   |   |
|             | ALS/NO ALS/ RVR ALS (m) | NIL / 1200 / NIL |   |   |   |   |

CHANGES: FREQ.

AIRAC AMDT 2301A1 26 JAN 23

**USO EXCLUSIVO ACFT MILITARES / MILITARY ACFT ONLY**

**SBNT\_IAC\_01H 1/1  
IAC PAR Z RWY 12**