

**INSTRUMENT APPROACH
CHART (IAC)**

NATAL / Campo Augusto Severo, MIL (SBNT)

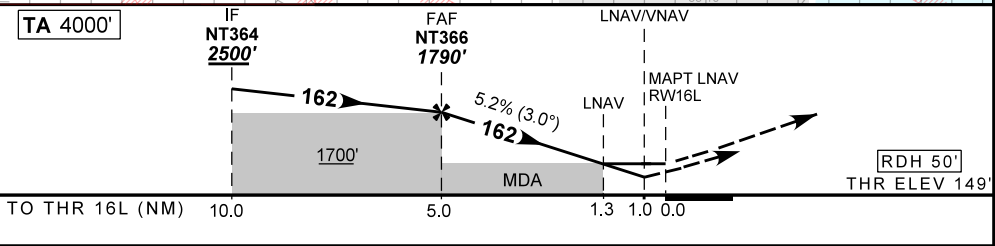
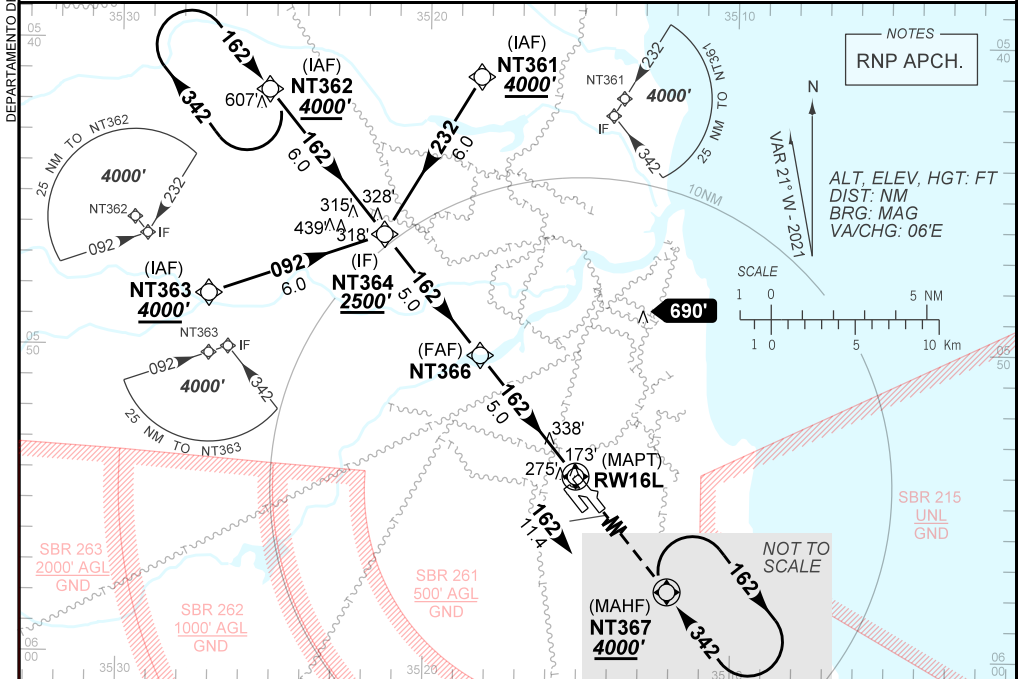
AD ELEV: 171'

RNP RWY 16L

D-ATIS 132.65	APP NATAL 119.30 119.65 120.65 129.80		TWR NATAL 118.70 122.80	GNDC NATAL 121.90
TEMP LNAV/VNAV MIN 0°C / MAX 50°C	FINAL CRS 162°	FAF: 1790'	LNAV/VNAV DA / (OCH): 520' / (371')	LNAV MDA / (OCH): 600' / (450')

APCH Perdida: Subir para **4000'**. Manter rumo **162** até NT367 para espera.

Missed APCH: Climb to **4000'**. Maintain course **162** to NT367 for holding.



NT366	4.0	3.0	2.0	1.3	RWY16L	Ground Speed (KT)	090	110	130	150	170	190
1790	1473	1154	836	600	ALT	FPM	500	600	700	800	900	NA
1641	1324	1005	687	450	(HGT)	FAF-MAPT	NIL					

STRAIGHT-IN	CAT	A	B	C	D	E
	DA / (OCH)	520' / (371')				NA
LNAV/VNAV	ALS/NO ALS/ RVR ALS (m)	NIL / 1700 / NIL				NA
	MDA / (OCH)	600' / (450')				
LNAV	ALS/NO ALS/ RVR ALS (m)	NIL / 1700 / NIL		NIL / 2100 / NIL		
	MDA / (OCH)	NA				
CIRCLING	MDA / (OCH)	NA				
	VIS (m)	NA				

CHANGES: EAC, IDENT, LAYOUT.