

**INSTRUMENT APPROACH  
CHART (IAC)**

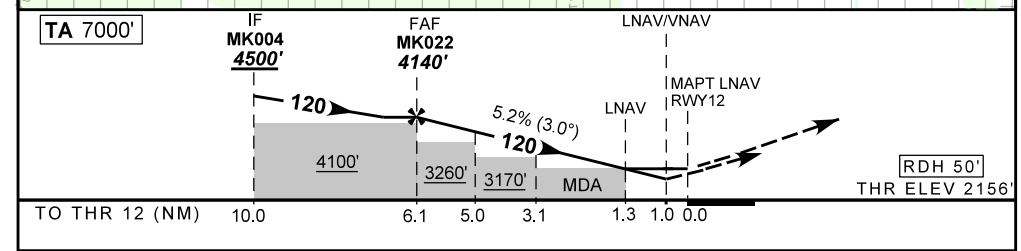
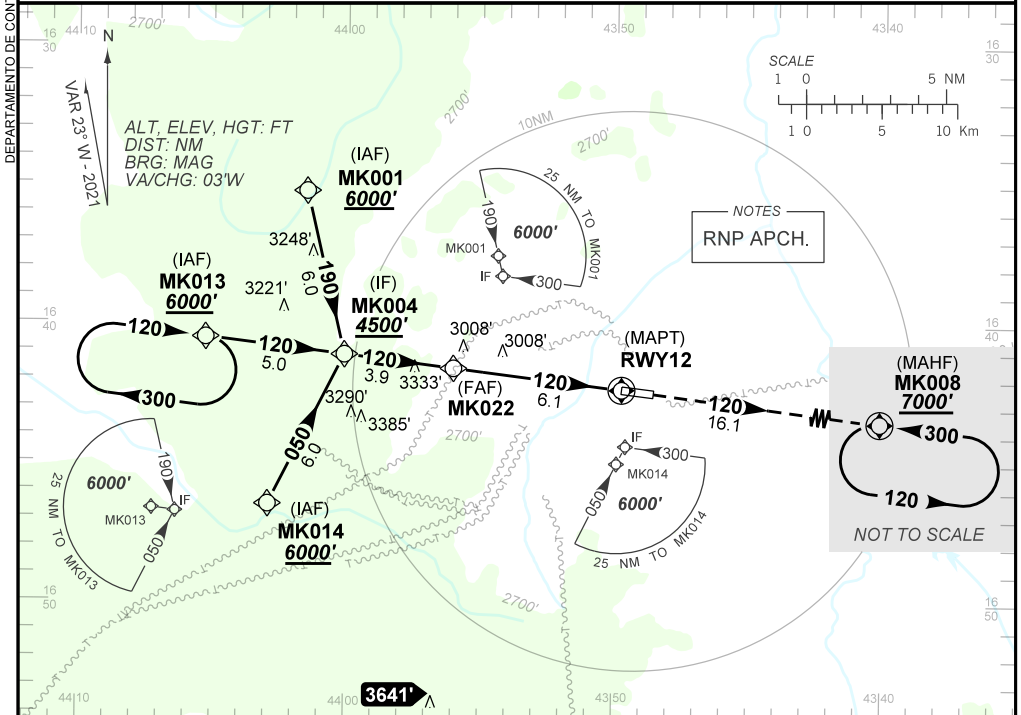
**MONTES CLAROS / Mário Ribeiro (SBMK)**

**AD ELEV: 2192'**

**RNP RWY 12**

ATIS NIL	APP NIL	AFIS MONTES CLAROS 131.70	GNDC NIL
TEMP LNAV/VNAV MIN 0°C / MAX 50°C	FINAL CRS 120°	FAF: 4140'	LNAV/VNAV DA / (OCH): 2510' / (354')
LNAV		MDA / (OCH): 2600' / (450')	

APCH Perdida: Subir para **7000'**. Manter rumo **120** até MK008 para espera.  
Missed APCH: Climb to **7000'**. Maintain course **120** to MK008 for holding.



MK022	5.0	3.1	2.0	1.3	1.0	RWY12	Ground Speed (KT)	090	110	130	150	170	190
4140	3800	3200	2843	2600	2510	ALT	FPM	500	600	700	800	900	NA
1984	1644	1044	687	450	354	(HGT)	FAF-MAPT	NIL					

STRAIGHT-IN	CAT	A	B	C	D	E
	DA / (OCH)	2510' / (354')				NA
LNAV/VNAV	ALS/NO ALS/ RVR ALS (m)	NIL / 1600 / NIL				
	MDA / (OCH)	2600' / (450')				
LNAV	ALS/NO ALS/ RVR ALS (m)	NIL / 1600 / NIL		NIL / 2100 / NIL		
	MDA / (OCH)	NA				
CIRCLING	MDA / (OCH)	NA				
	VIS (m)	NA				

CHANGES: IDENT LAYOUT- PROC. VAR.