

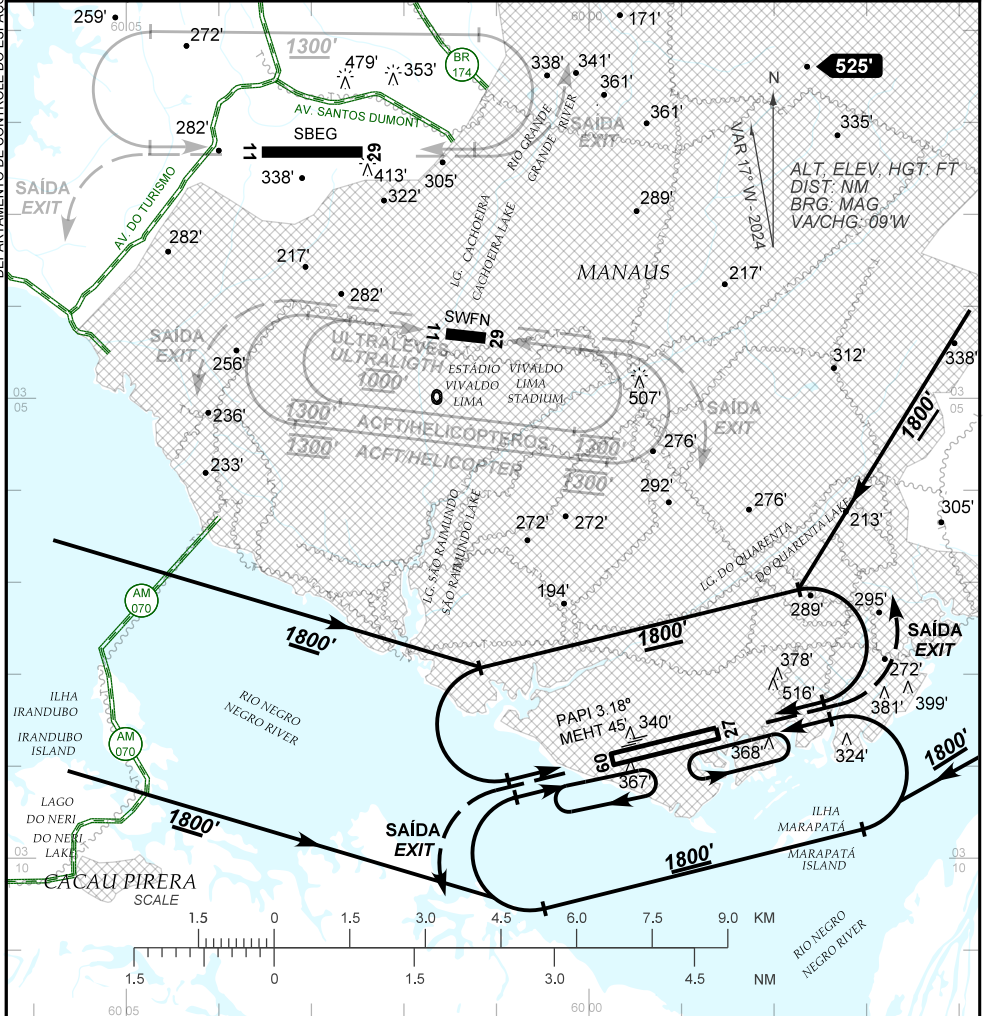
**VISUAL APPROACH CHART
(VAC)**

MANAUS / Ponta Pelada, MIL (SBMN)

AD ELEV: 257'

RWY 09 / 27

| | | | |
|---------------------------|--|--|---------------------------|
| ATIS NIL | APP MANAUS 119.25 119.70 120.40 129.55 129.80 | TWR PONTA PELADA 118.60 | GNDC NIL |
|---------------------------|--|--|---------------------------|



RMK:
 1- O CIRCUITO ESTÁ CALCULADO PARA A SEGUINTE VELOCIDADE MÁXIMA: 160 KT.
 PATTERN IS CALCULATED FOR THE FOLLOWING MAXIMUM SPEED: 160 KT.