

**INSTRUMENT APPROACH  
CHART (IAC)**

**ALTO ALEGRE / Surucucu (SWUQ)**

**RNP RWY 30**

(Cat A, B, C)

**AD ELEV: 3008'**

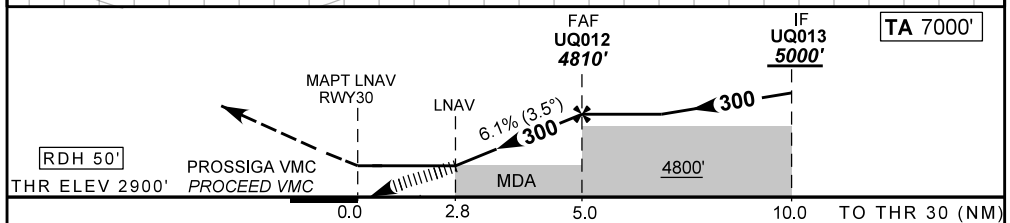
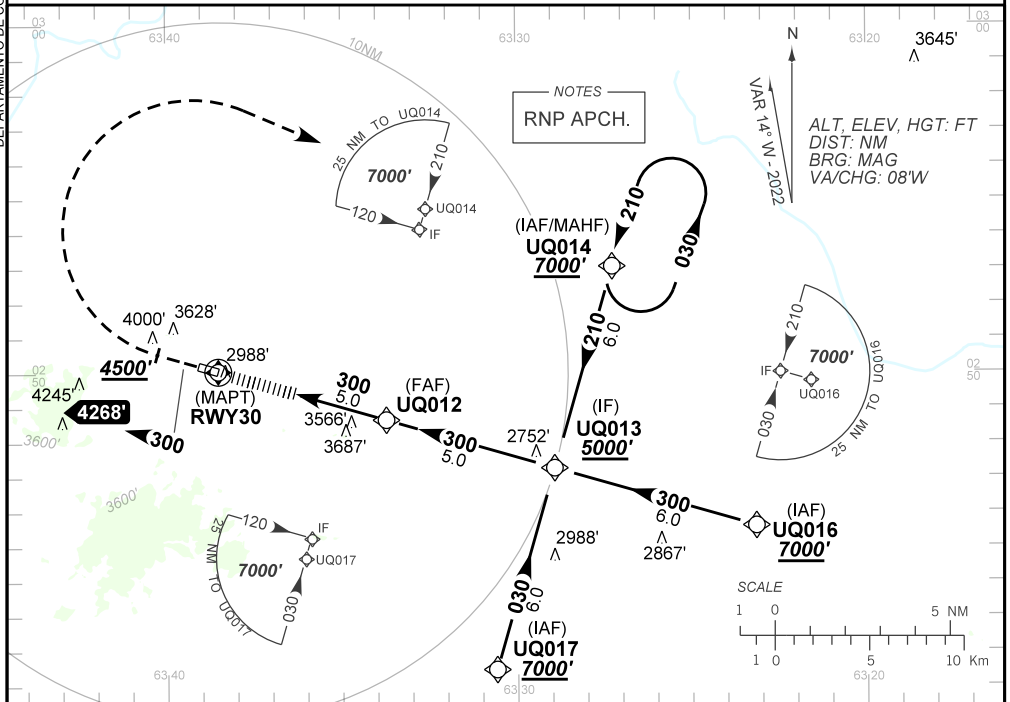
DEPARTAMENTO DE CONTROLE DO ESPAÇO AÉREO

ATIS NIL	APP NIL	AFIS NIL	GNDC NIL
-------------	------------	-------------	-------------

N/A	FINAL CRS 300°	FAF: 4810'	N/A	LNVA MDA / (OCH): 3980' / (1080')
-----	-------------------	---------------	-----	--------------------------------------

APCH Perdida : Subir para **7000'** . Manter rumo **300** até **4500'** .Após, curvar à DIREITA direto UQ014 para espera.

Missed APCH: Climb to **7000'** .Maintain course **300** until **4500'** . After, turn RIGHT direct to UQ014 for holding.



RWY30	2.8	4.0	UQ012							Ground Speed (KT)	090	110	130	150	170	190
ALT	3980	4436	4810							FPM	500	600	700	800	NA	NA
(HGT)	1080	1536	1910							FAF-MAPT	NA					

STRAIGHT-IN	CAT	A	B	C	D	E
	MDA / (OCH)	3980' / (1080')				NA
LNVA	ALS/NO ALS/ RVR ALS (m)	NIL / 5000 / NIL				
CIRCLING	MDA / (OCH)	NA				
	VIS (m)					

CHANGES: NEW CHART.