

**INSTRUMENT APPROACH
CHART (IAC)**

**USO EXCLUSIVO ACFT MILITARES
MILITARY ACFT ONLY**

CARACARAÍ / Caracaraí, MIL (SBQI)

AD ELEV: 184'

RNP RWY 22

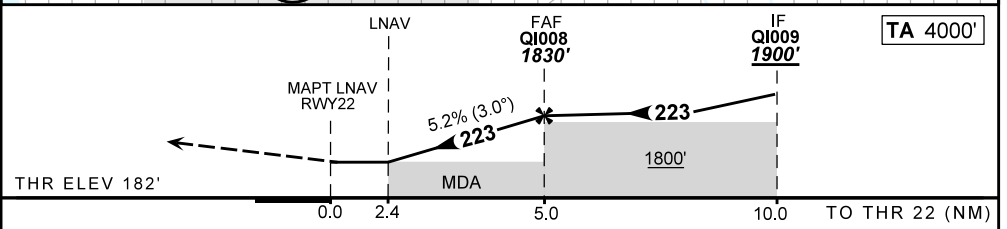
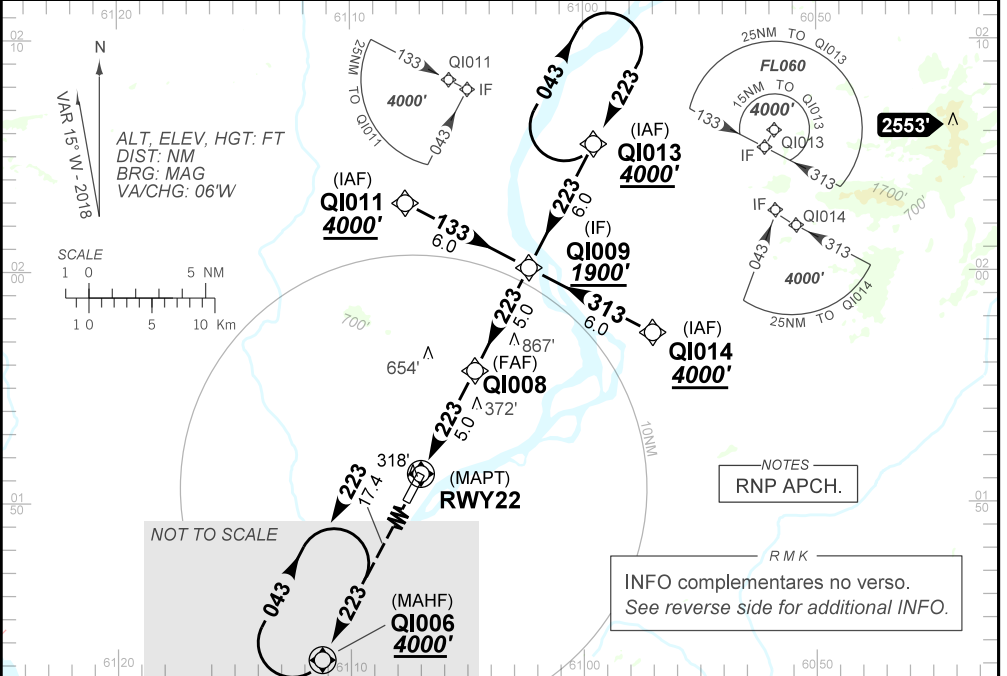
ATIS NIL	APP NIL	TWR NIL	APP BOA VISTA 120.10
N/A	FINAL CRS 223°	FAF: 1830'	LNAV RASS (SBBV) MDA / (OCH): 980' / (800')

APCH Perdida: Subir para **4000'**. Manter rumo **223** até QI006 para espera.

Missed APCH: Climb to **4000'**. Maintain course **223** up to QI006 for holding.

RMK: 1) Realização do procedimento condicionada às regras específicas definidas pelo COMAER.
1) Procedure must be carried out according to specific rules defined by COMAER.

DEPARTAMENTO DE CONTROLE DO ESPAÇO AÉREO



RWY22	2.4	3.0	4.0	QI008		Ground Speed (KT)	090	110	130	150	170	190
ALT	980	1187	1506	1830		FPM	500	600	700	800	900	NA
(HGT)	800	1005	1324	1648		FAF-MAPT	NA					

STRAIGHT-IN	CAT	A	B	C	D	E
LNAV	MDA / (OCH)	NA				
	ALS/NO ALS/ RVR ALS (m)	NA				
LNAV RASS (SBBV)	MDA / (OCH)	980' / (800')				
	ALS/NO ALS/ RVR ALS (m)	NIL / 2000 / NIL		NIL / 3600 / NIL		
CIRCLING	MDA / (OCH)	NA				
	VIS (m)	NA				

AIRAC AMDT 2213A1 29 DEC 22

USO EXCLUSIVO ACFT MILITARES / MILITARY ACFT ONLY

**SBQI_IAC_00A 1/2
IAC RNP RWY 22**

RMK

- 2 - Antes de iniciar o procedimento informar posição e intenção de voo na FREQ 123.45 MHz.
Before starting procedure, report position and flight intentions at FREQ 123.45 MHZ.
- 3 - Utilizar o altímetro de SBBV.
Use altimeter setting from SBBV.
- 4 - Após a MDA, ao prosseguir para pouso, atentar para condições da pista e para a possibilidade de incursões em pista.
After the MDA, when proceeding for landing, watch field conditions to avoid runway incursions.
- 5 - Dados complementares:
Complementary data:

IDENT	LATITUDE/LONGITUDE
QI006	N01:35.80 W 61:15.06
QI008	N01:55.68 W 61:04.67
QI009	N02:00.13 W 61:02.34
QI011	N02:02.93 W 61:07.65
QI013	N02:05.47 W 60:59.55
QI014	N01:57.32 W 60:57.04
RWY22	N01:51.24 W 61:06.99

DEPARTAMENTO DE CONTROLE DO ESPAÇO AÉREO

CHANGES: DIST. EAC. IDENT. LAYOUT.