

**INSTRUMENT APPROACH  
CHART (IAC)**

**SOROCABA / Sorocaba (SDCO)**

**RNP Y RWY 19**

(CAT A,B,C)

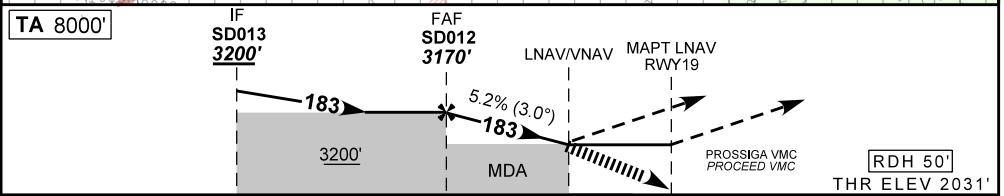
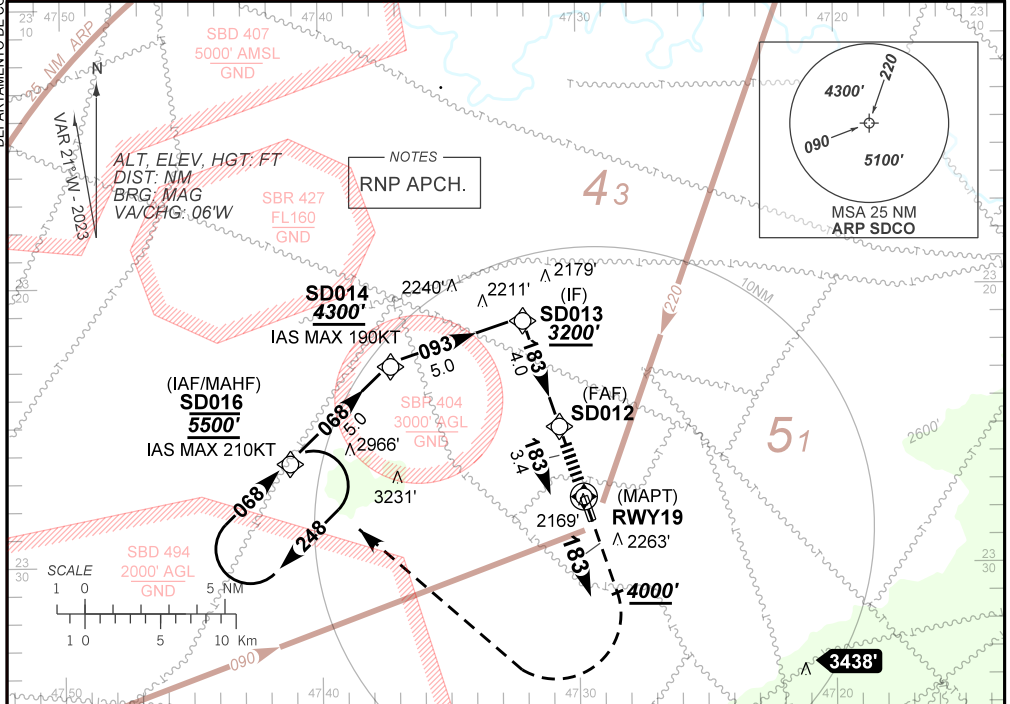
**AD ELEV: 2083'**

ATIS <b>127.775</b>	APP SÃO PAULO <b>129.50 119.25 119.80</b>	AFIS SOROCABA <b>118.80</b>	TWR SOROCABA <b>118.80</b>	GND C. SOROCABA <b>121.80</b>
TEMP LNAV/VNAV <b>MIN -10°C / MAX 50°C</b>	FINAL CRS <b>183°</b>	FAF: <b>3170'</b>	LNAV/VNAV DA / (OCH): <b>3031' / (1000')</b>	LNAV MDA / (OCH): <b>3040' / (1010')</b>

APCH Perdida: Subir para **5500'**. Manter rumo **183°** até **4000'**. Após, curvar à DIREITA direto SD016 para espera.

Missed APCH: Climb to **5500'**. Maintain course **183°** until **4000'**. After, turn RIGHT direct SD016 for holding.

DEPARTAMENTO DE CONTROLE DO ESPAÇO AÉREO



TA 8000'	IF SD013 3200'	FAF SD012 3170'	LNAV/VNAV	MAPT LNAV RWY19	RDH 50'	THR ELEV 2031'
TO THR 19 (NM)	7.4	3.4	3.0	0.0		

		SD012	3.0	RWY 19	Ground Speed (KT)	090	110	130	150	170	190
		3170	3040	ALT	FPM	500	600	700	800	NA	
		1139	1000	(HGT)	FAF-MAPT	NIL					

STRAIGHT-IN	CAT	A			B			C			D			E											
		DA / (OCH)						3031' / (1000')						NIL / 5000' / NIL											
LNAV/VNAV	ALS/NO ALS/ RVR ALS (m)														NIL / 5000' / NIL										
	MDA / (OCH)														3040' / (1010')						NIL / 5000' / NIL				
LNAV	ALS/NO ALS/ RVR ALS (m)														NIL / 5000' / NIL										
	MDA / (OCH)														NIL / 5000' / NIL										
CIRCLING	VIS (m)														NA										

CHANGES: PROC.