

**INSTRUMENT APPROACH
CHART (IAC)**

CANOAS / Campo Nossa Senhora de Fátima, MIL (SBCO)

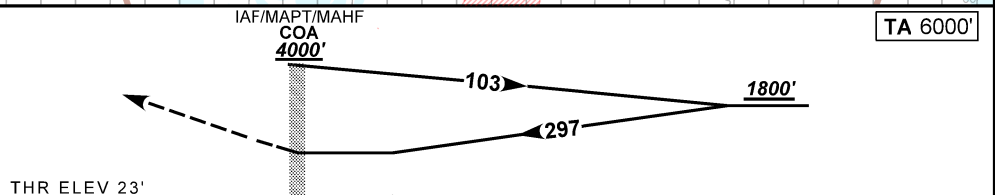
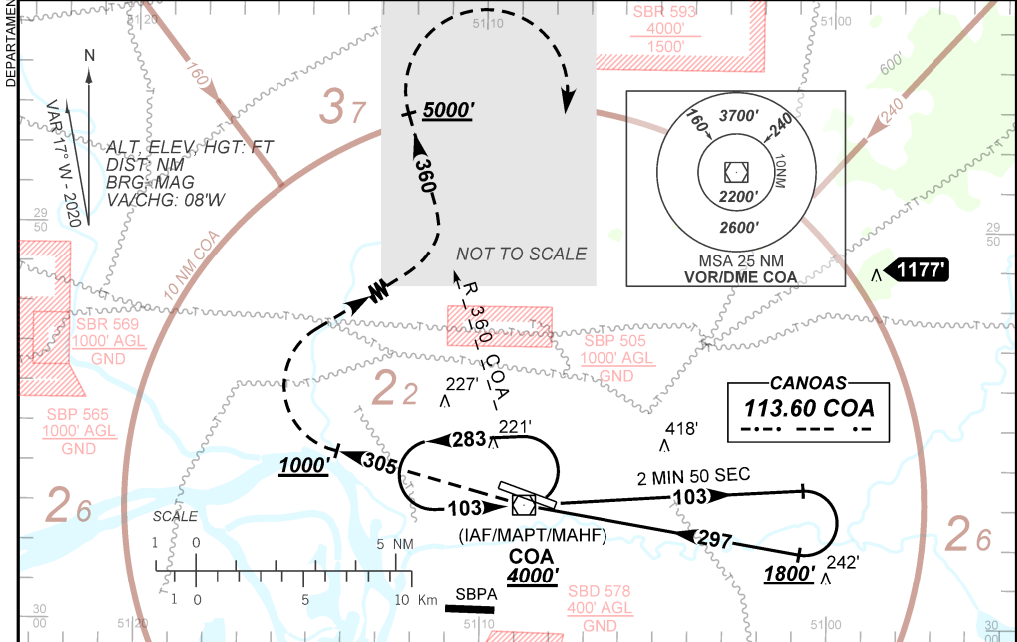
**VOR Y RWY 31
(CAT A, B)**

AD ELEV: 26'

ATIS NIL	APP PALEGRE 119.00 120.10 120.55 128.90			TWR CANOAS 118.50 122.80 (MIL)	GNDC CANOAS 121.70
VOR COA 113.60 MHz	FINAL CRS 297°	N/A	N/A	VOR MDA / (OCH): 540' / (520')	

APCH Perdida: Subir para **5000'**. Manter proa **305** até **1000'**. Após, curvar à DIREITA para interceptar a RDL **360** do VOR COA até **5000'**. Então, curvar à DIREITA direto VOR COA para espera.
Missed APCH: Climb to **5000'**. Maintain heading **305** until **1000'**. After, turn RIGHT to intercept **360** RDL COA VOR until **5000'**. Then, turn RIGHT direct to COA VOR for holding.

RMK: Não autorizado esperas simultâneas sobre Canoas e Porto Alegre no mesmo nível.
Unauthorized simultaneous holding over Canoas and Porto Alegre on the same flight level.



THR ELEV 23'		IAF/MAPT/MAHF COA 4000'		TA 6000'				
RWY 31	NIL	Ground Speed (KT)	090	110	130	150	170	190
ALT	NIL	FPM	630		NA			NA
(HGT)	NIL	FAF-MAPT	NA					

STRAIGHT-IN	CAT	A	B	C	D	E
	MDA / (OCH)	540' / (520')		NA		
VOR	ALS/SNO ALS/ RVR ALS (m)	NIL / 1600 / NIL		NA		
	MDA / (OCH)	NA				
CIRCLING	MDA / (OCH)	NA				
	VIS (m)	NA				

CHANGES: EAC. IDENT.