

**INSTRUMENT APPROACH
CHART (IAC)**

SALVADOR / Deputado Luís Eduardo Magalhães, INTL (SBSV)

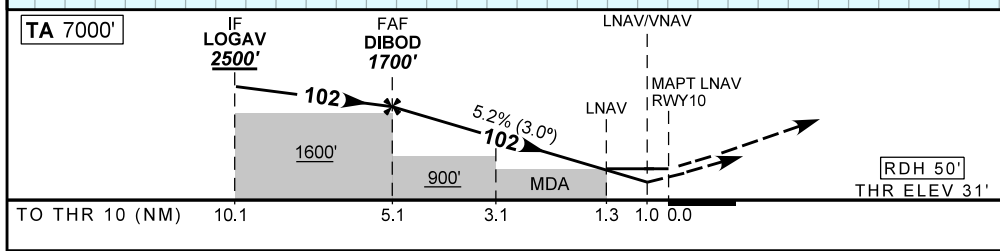
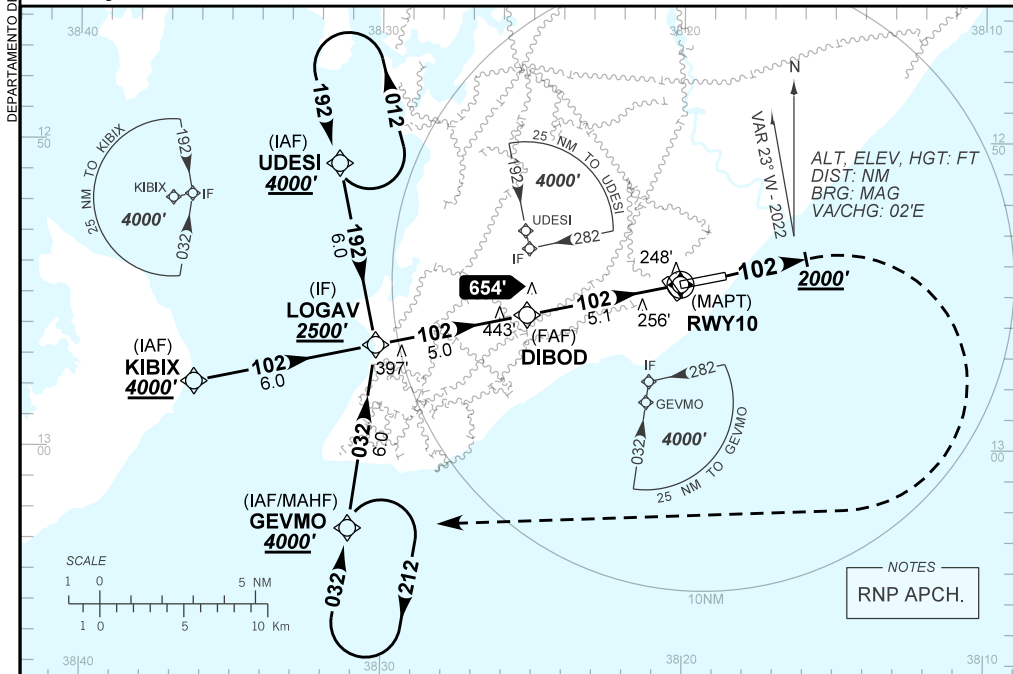
AD ELEV: 66'

RNP RWY 10

D-ATIS 127.75	APP SALVADOR 119.35 119.80 120.80 129.45	TWR SALVADOR 118.30 118.60 118.95 121.10	GNDC SALVADOR 121.90
TEMP LNAV/VNAV MIN 0°C / MAX 46°C	FINAL CRS 102°	FAF: 1700'	LNAV/VNAV DA / (OCH): 409' / (378')
		LNAV MDA / (OCH): 500' / (470')	

APCH Perdida: Subir para **4000'**. Manter proa **102** até cruzar **2000'**. Após, curvar à DIREITA direto GEVMO para espera.

Missed APCH: Climb to **4000'**. Maintain heading **102** until passing **2000'**. After, turn RIGHT direct to GEVMO for holding.



	DIBOD	4.0	3.1	2.0	1.3	RWY10	Ground Speed (KT)	090	110	130	150	170	190	
		1700	1355	1057	718	500	FPM	500	600	700	800	900	NA	
		1669	1324	1026	687	470	(HGT)	FAF-MAPT						NIL

STRAIGHT-IN	CAT	A	B	C	D	E	
	DA / (OCH)	409' / (378')					NA
LNAV/VNAV	ALS/NO ALS/ RVR ALS (m)	NIL / 1700 / NIL					
	MDA / (OCH)	500' / (470')					
LNAV	ALS/NO ALS/ RVR ALS (m)	NIL / 1700 / NIL			NIL / 2200 / NIL		
	CIRCLING	MDA / (OCH)	NA				
	VIS (m)						

CHANGES: IDENT, LAYOUT, PROC.