

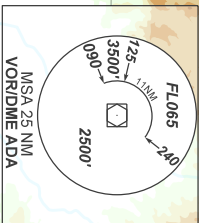
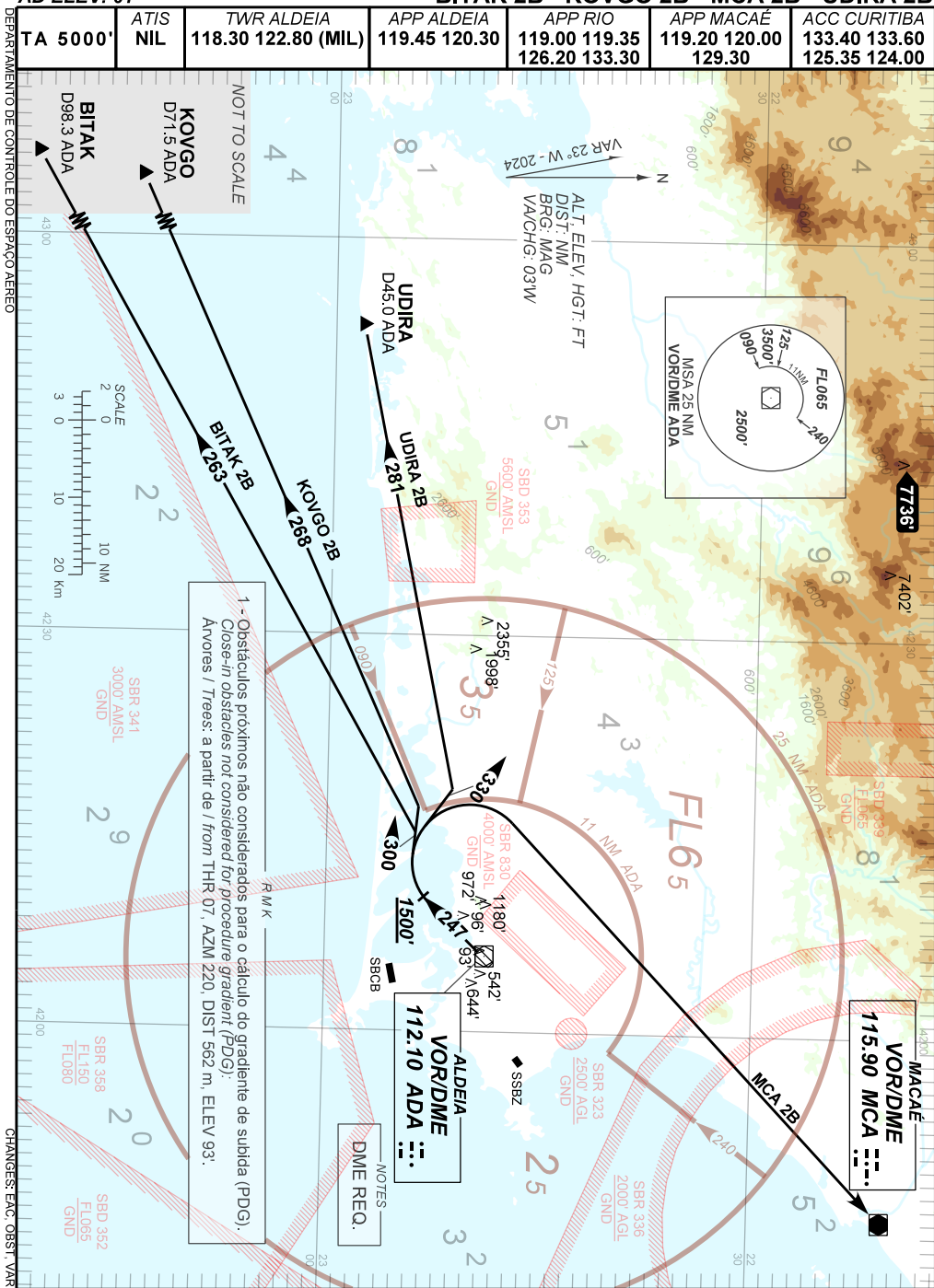
STANDARD DEPARTURE CHART SÃO PEDRO DA ALDEIA/Tenente Jorge Henrique Möller, MIL (SBES)
INSTRUMENT (SID)

RWY 25

BITAK 2B - KOVGO 2B - MCA 2B - UDIRA 2B

AD ELEV: 61'

TA 5000'	ATIS NIL	TWR ALDEIA 118.30 122.80 (MIL)	APP ALDEIA 119.45 120.30	APP RIO 119.00 119.35 126.20 133.30	APP MACAÉ 119.20 120.00 129.30	ACC CURITIBA 133.40 133.60 125.35 124.00
----------	-------------	-----------------------------------	-----------------------------	---	--------------------------------------	--



1 - Obstáculos próximos não considerados para o cálculo do gradiente de subida (PDG).
Close-in obstacles not considered for procedure gradient (PDG).
Aviores / Trees: a partir de / from THR 07, AZM 220, DIST 662 m, ELEV 93'.

NOTES
DME REQ.

ALDEIA
VORDME
112.10 ADA

MACAÉ
VORDME
115.90 MCA

DEPARTAMENTO DE CONTROLE DO ESPAÇO AEREO