

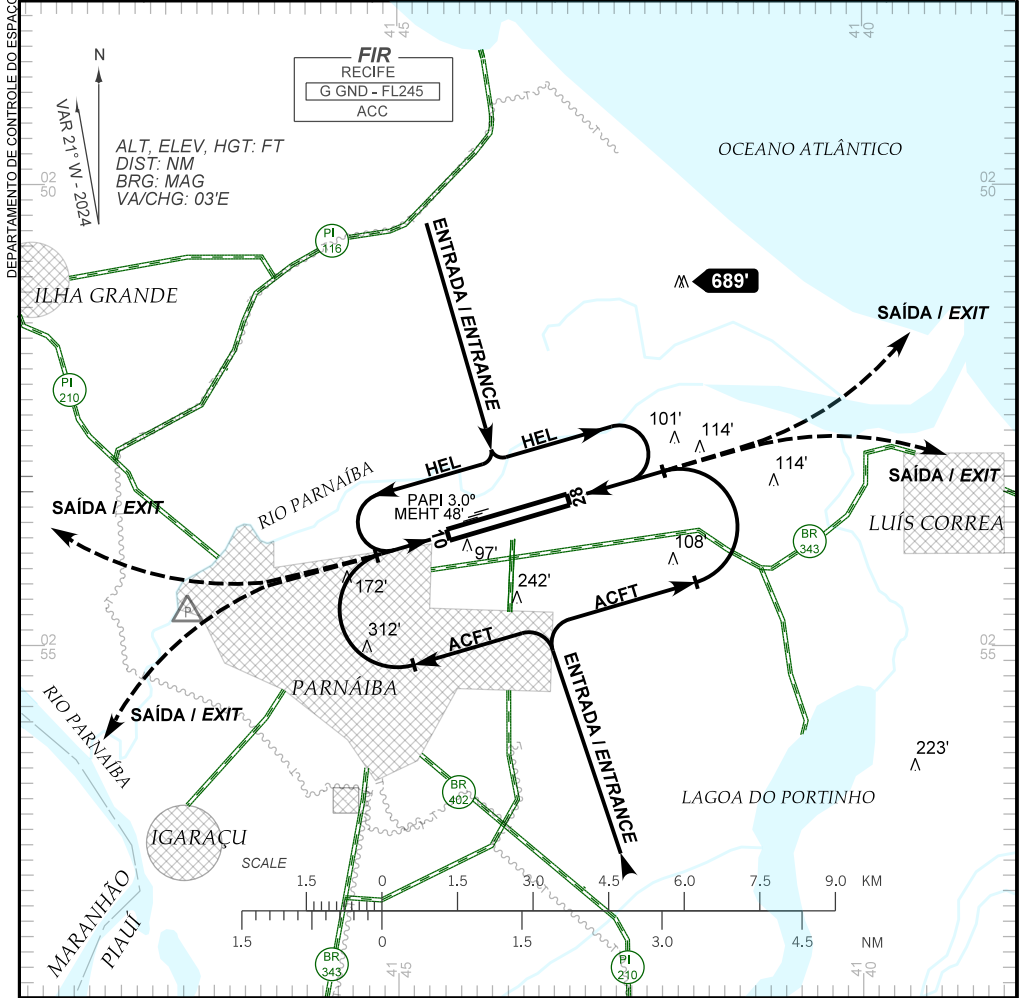
VISUAL APPROACH CHART
(VAC)

PARNAÍBA / Prefeito Doutor João Silva Filho (SBPB)

AD ELEV: 23'

RWY 10 / 28

| | | | | | |
|-------------|--|------------|------------|----------------|-------------|
| ATIS NIL | ACC RECIFE 123.275 125.15 135.25 122.825 | APP NIL | TWR NIL | AFIS 126.60 | GNDC NIL |
|-------------|--|------------|------------|----------------|-------------|



RMK:

1- ALTITUDES MÍNIMAS NO CIRCUITO DE TRÁFEGO:
MINIMUM ALTITUDES IN THE TRAFFIC CIRCUIT:

1.1- AERONAVES / AIRPLANES:

- CAT A, B, C: 1100'

- CAT D, E: 1600'

1.2- HELICÓPTEROS / HELICOPTERS: 800'

2- CIRCUITO DE TFC PARA ACFT ASA FIXA DEVERÁ SER REALIZADO APENAS PELO SECT S DO AD E PARA ACFT ASA ROTATIVA APENAS PELO SECT N DO AD.
TFC CIRCUIT FOR FIXED WING ACFT MUST BE CARRIED OUT ONLY BY AD SECT S AND FOR ROTATING WING ONLY BY AD SECT N.

3- INFORMAÇÕES COMPLEMENTARES NO VERSO.
SEE REVERSE SIDE FOR ADDITIONAL INFORMATION.

CHANGES: NEW CHART.

— RMK —

- 4- MNM VFR PARA HELICÓPTEROS / VFR MNM FOR HELICOPTERS : 800'
- 5- ATENTAR PARA PARQUE EÓLICO LOCALIZADO NO SECT N DO AD.
PAY ATTENTION TO THE WIND FARM LOCATED IN SECT N OF AD.
- 6- OBS CONCENTRAÇÃO DE PÁSSAROS (URUBUS) NA THR 10/28 E SECT DE APCH
RWY 10.
*OBSERVE BIRD CONCENTRATION (VULTURES) AT THR 10/28 AND APCH SECT TO
RWY 10.*