

**INSTRUMENT APPROACH  
CHART (IAC)**

**MACAÉ / Plataforma PETROBRÁS 52 P-52 (SBRC)**

**RNP 102  
PINS - (CAT H)**

**HELPHN ELEV: 105'**

ATIS <b>NIL</b>	APP MACAÉ <b>131.975 126.90 120.00</b>		TWR <b>NIL</b>	GNDC <b>NIL</b>
--------------------	---	--	-------------------	--------------------

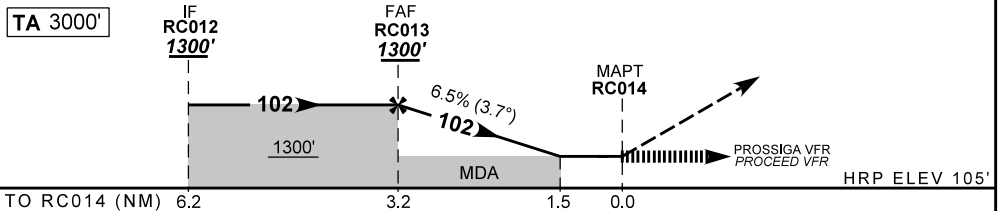
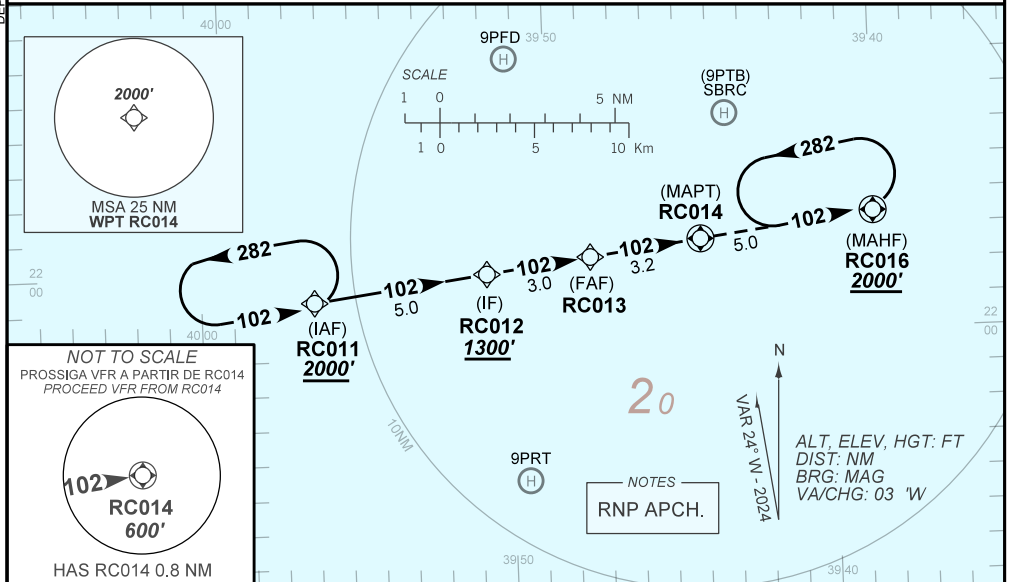
<b>N/A</b>	FINAL CRS <b>102°</b>	FAF: <b>1300'</b>	<b>N/A</b>	LNAV MDA / (OCH): <b>600' / (500')</b>
------------	--------------------------	----------------------	------------	---

APCH Perdida: Subir para **2000'**. Manter rumo **102** até RC016 para espera.  
Missed APCH: Climb to **2000'**. Maintain course **102** until RC016 for holding.

RMK: 1) Procedimento poderá ser utilizado para helideques situados até 10NM de RC014. 2) Requerida autorização do APP-ME para início do procedimento. 3) Requerido FPL "Y" com mudança de regras de voo para VFR em RC014.

1) Procedure may be authorized for helideks situated within 10NM from RC014. 2) Authorization required from APP-ME to initiate the procedure. 3) FPL "Y" required with flight rules change to VFR at RC014.

DEPARTAMENTO DE CONTROLE DO ESPAÇO AÉREO



	RC013	3.0	2.0	1.5	RC014	Ground Speed (KT)	060	070	080	090
		1300	1185	790	600	ALT	390	460	520	590
					(HGT)	FAF-MAPT	NA			

STRAIGHT-IN	CAT	H	
LNAV	MDA / (OCH)	600' / (500')	
	VIS (m)	1500	
CIRCLING	MDA / (OCH)	NA	
	VIS (m)	NA	

CHANGES: VAR.