

**INSTRUMENT APPROACH
CHART (IAC)**

SANTA MARIA / Santa Maria (SBSM)

NAV APV RWY 11

(ONLY CAT E)

**USO EXCLUSIVO F-39
F-39 USE ONLY**

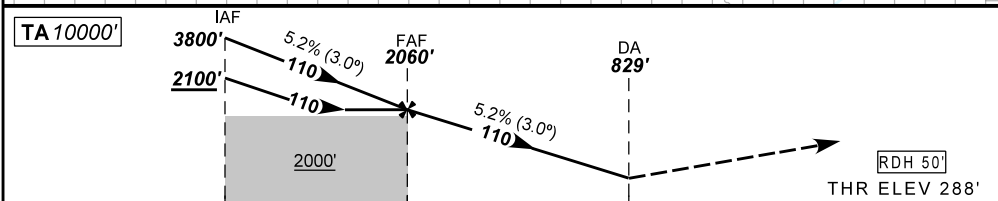
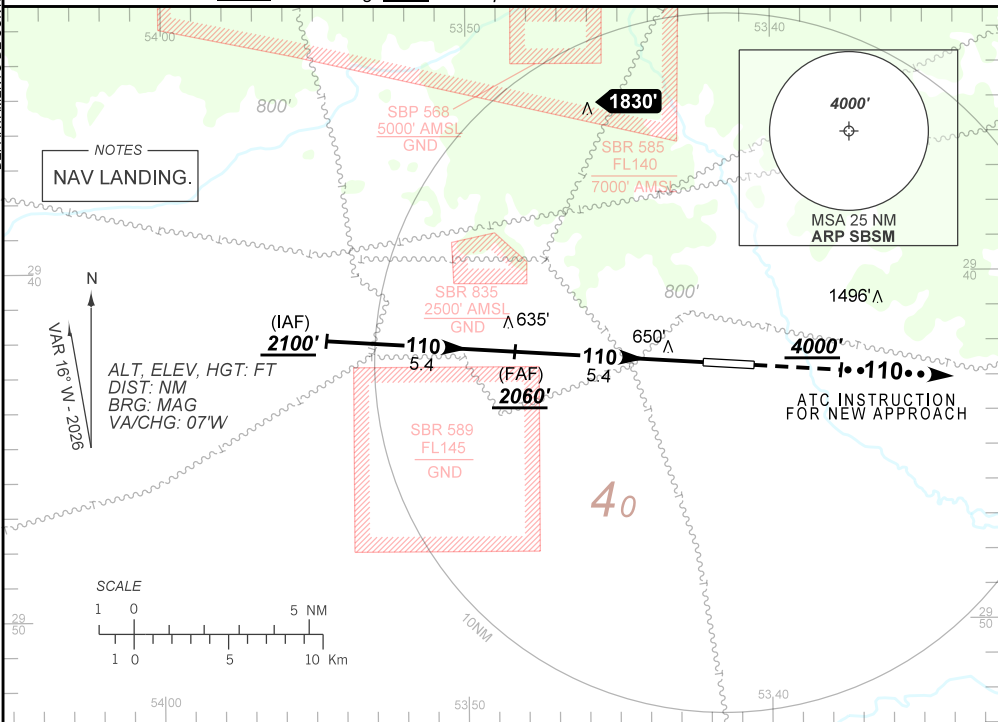
AD ELEV: 289'

ATIS 127.75	APP SANTA MARIA 119.35 121.35	TWR SANTA MARIA 118.30 118.85	AFIS SANTA MARIA 119.35 121.35 118.30	GNDC NIL
TEMP LNAV/VNAV MIN -20°C / MAX 50°C		FINAL CRS 110°	FAF: 2060'	NAV APV DA / (OCH): 829' / (541')
				N/A

APCH Perdida: Subir para **4000'** na proa **110°** e aguardar instruções ATC.

Missed APCH: Climb to **4000'** on heading **110°** and expect further ATC instructions.

DEPARTAMENTO DE CONTROLE DO ESPAÇO AEREO



TO THR 11 (NM) 10.8 5.4 1.5 0.0

	FAF	4.0	3.0	2.0	1.5	RWY11	Ground Speed (KT)	090	110	130	150	170	190
	2060	1612	1293	975	829	ALT	FPM	500	600	700	800	900	1000
	1772	1324	1005	687	541	(HGT)	FAF-MAPT	NIL					

STRAIGHT-IN	CAT	ONLY CAT E
	NAV APV	DA / (OCH) 829' / (541')
	ALS/NO ALS/ RVR ALS (m)	NIL / 2500 / NIL
		NA
CIRCLING	MDA / (OCH)	NA
	VIS (m)	

CHANGES: NEW CHART