

**INSTRUMENT APPROACH  
CHART (IAC)**

**PONTA GROSSA / Comandante Antônio Amilton Beraldo (SBPG)**

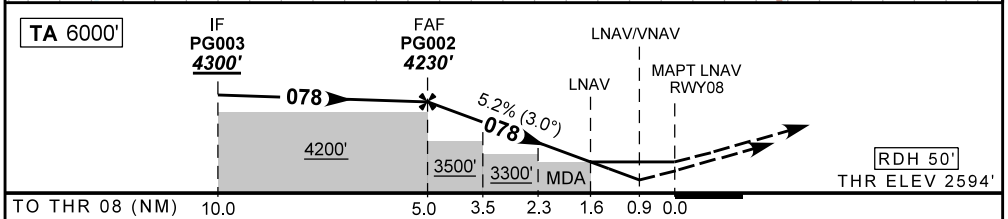
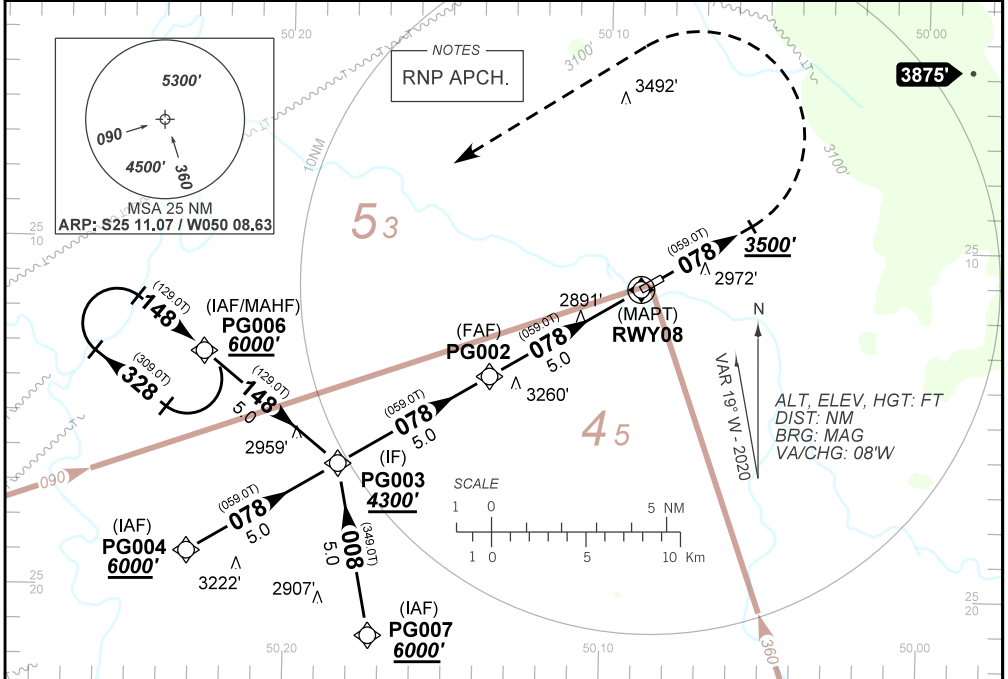
**RNAV(GNSS) RWY 08**

**AD ELEV: 2594'**

ATIS <b>NIL</b>	ACC CURITIBA <b>125.80 127.20 132.45</b>		AFIS PONTA GROSSA <b>128.10</b>		GNDC <b>NIL</b>
<b>N/A</b>	FINAL CRS <b>078°</b>	FAF: <b>4230'</b>	LNAV/VNAV DA / (OCH): <b>2930' / (336')</b>	LNAV MDA / (OCH): <b>3140' / (550')</b>	

APCH Perdida: Subir para **6000'**. Manter rumo **078** até **3500'**. Curvar à ESQUERDA direto PG006 para espera.  
Missed APCH: Climb up to **6000'**. Maintain course **078** up to **3500'**. Turn LEFT direct to PG006 for holding.

RMK: 1) Para sistemas não compensados, LNAV/VNAV não autorizado abaixo de -10°C e acima de 55°C.  
1) For uncompensated systems, LNAV/VNAV procedure not authorized below -10°C and above 55°C.



TO THR 08 (NM)	10.0	5.0	3.5	2.3	1.6	0.9	0.0											
	5.0	4.0	3.0	2.0	1.6	RWY08												
	4230	3918	3600	3281	3140	ALT												
	1636	1324	1006	687	550	(HGT)												

STRAIGHT-IN	CAT	A	B	C	D	E
	DA / (OCH)	2930' / (336')				
LNAV/VNAV	ALS/NO ALS/ RVR ALS (m)	NIL / 1500 / NIL			NA	
	MDA / (OCH)	3140' / (550')				
LNAV	ALS/NO ALS/ RVR ALS (m)	NIL / 1600 / NIL		NIL / 2500 / NIL		
	MDA / (OCH)	NA				
CIRCLING	MDA / (OCH)	NA				
	VIS (m)	NA				

CHANGES: NEW CHART.