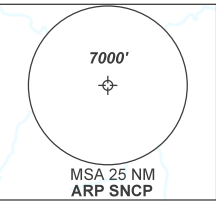
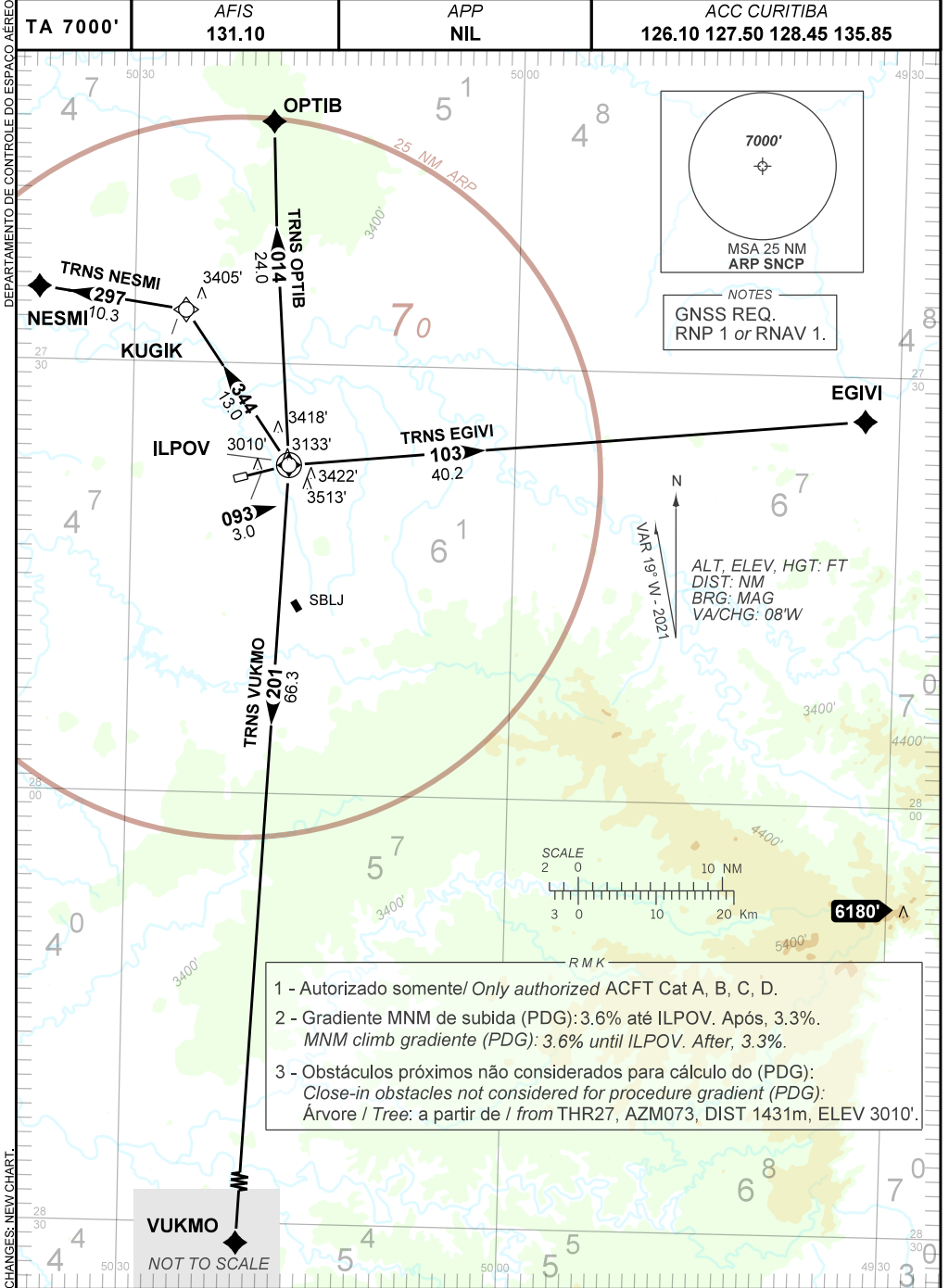


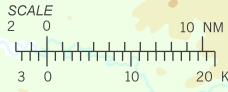
AD ELEV: 2887'

TA 7000'	AFIS 131.10	APP NIL	ACC CURITIBA 126.10 127.50 128.45 135.85
----------	-------------	---------	---



NOTES
GNSS REQ.
RNP 1 or RNAV 1.

ALT, ELEV, HGT: FT
DIST: NM
BRG: MAG
VA/CHG: 08'W



- 1 - Autorizado somente/ Only authorized ACFT Cat A, B, C, D.
- 2 - Gradiente MNM de subida (PDG): 3.6% até ILPOV. Após, 3.3%.
MNM climb gradient (PDG): 3.6% until ILPOV. After, 3.3%.
- 3 - Obstáculos próximos não considerados para cálculo do (PDG):
Close-in obstacles not considered for procedure gradient (PDG):
Árvore / Tree: a partir de / from THR27, AZM073, DIST 1431m, ELEV 3010'.

VUKMO
NOT TO SCALE

CHANGES: NEW CHART.