

**INSTRUMENT APPROACH  
CHART (IAC)**

**GOIÂNIA / Santa Geneveva, INTL (SBGO)**

**VOR RWY 32**

**AD ELEV: 2453'**

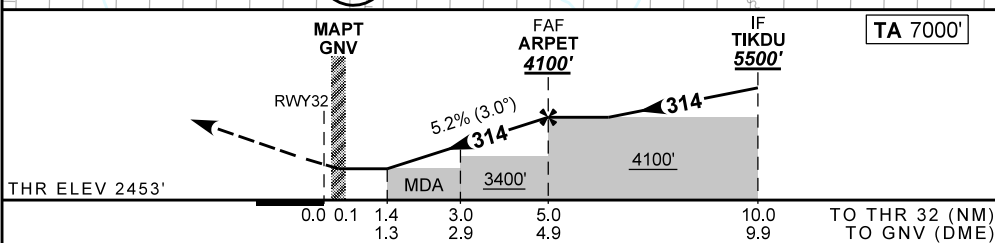
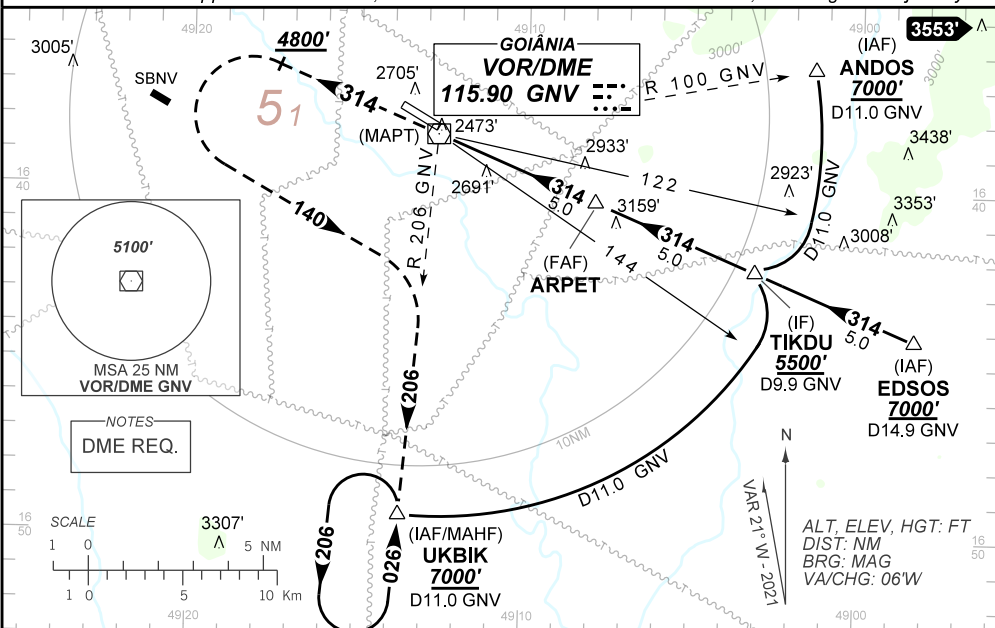
ATIS <b>127.675</b>	APP ANÁPOLIS <b>129.45 133.00 119.15 120.55</b>		TWR GOIÂNIA <b>118.70 121.05</b>	GNDC GOIÂNIA <b>121.70</b>
VOR GNV <b>115.90 MHz</b>	FINAL CRS <b>314°</b>	FAF: <b>4100'</b>	N/A	VOR MDA / (OCH): <b>2940' / (490')</b>

DEPARTAMENTO DE CONTROLE DO ESPAÇO AEREO

**APCH Perdida:** 1) Subir para **7000'**. Manter rumo **314** até **4800'**. Após, curvar a ESQUERDA proa **140** para interceptar RDL **206** do VOR GNV até UKBIK para espera. 2) IAS MAX 170KT até interceptar RDL **206** do VOR GNV.

**Missed APCH:** 1) Climb to **7000'**. Maintain course **314** until **4800'**. After, turn LEFT heading **140** to intercept **206** RDL GNV VOR to UKBIK for holding. 2) IAS MAX 170KT until intercept **206** RDL GNV VOR.

**RMK:** Atenção: Aeronave na aproximação para RWY 32, não confundir com TWY JULIET, à direita da trajetória.  
**Attention:** Aircraft on approach to RWY 32, should not be confused with TWY JULIET, to the right of trajectory.



RWY32	1.4	2.0	3.0	4.0	ARPET	Ground Speed (KT)	090	110	130	150	170	190
ALT	2940	3140	3458	3777	4100	FPM	500	600	700	800	900	1000
(HGT)	490	687	1005	1324	1647	FAF-MAPT	NA					

STRAIGHT-IN	CAT	A	B	C	D	E
VOR	MDA / (OCH)	2940' / (490')				
	ALS/NO ALS/ RVR ALS (m)	NIL / 1600 / NIL		NIL / 2300 / NIL		
CIRCLING	MDA / (OCH)	NA				
	VIS (m)	NA				

CHANGES: LAYOUT: RMK