

**INSTRUMENT APPROACH
CHART (IAC)**

NATAL / Augusto Severo, MIL (SBNT)

**USO EXCLUSIVO ACFT MILITARES
MILITARY ACFT ONLY**

PAR Z RWY 12

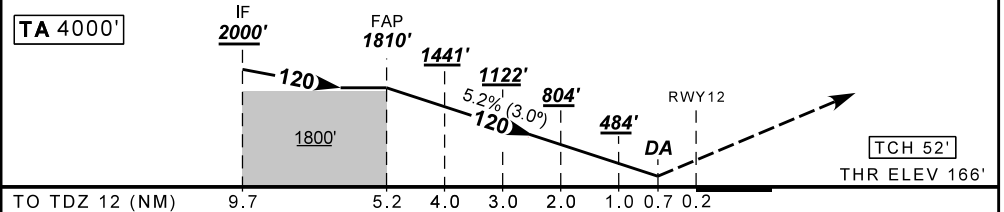
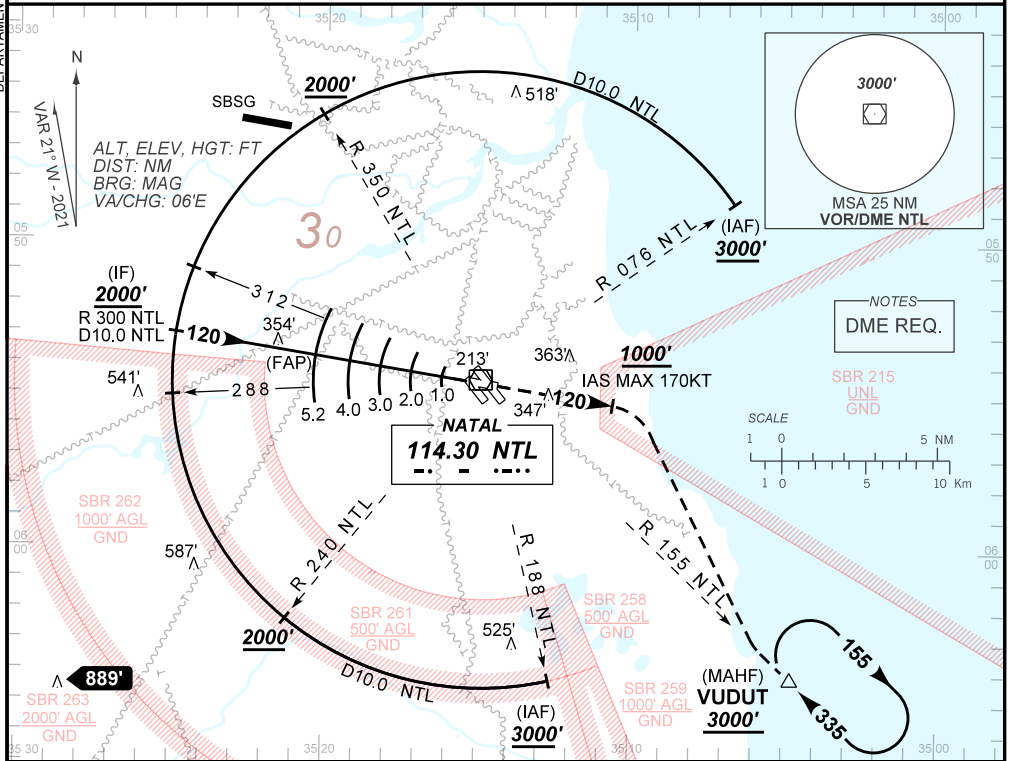
AD ELEV: 171'

D-ATIS 132.65	APP NATAL 119.30 119.65 120.65 129.80	PAR NATAL 128.50 132.20	TWR NATAL 118.70 122.80	GNDC NATAL 121.90
N/A	FINAL CRS 120°	FAP: 1810'	PAR DA / (OCH): 392' / (226')	N/A

APCH Perdida: Subir para **3000'**. Manter proa **120** até **1000'**. Após, curvar à DIREITA para interceptar RDL **155** do VOR NTL até VUDUT para espera.
Missed APCH: Climb to **3000'**. Maintain heading **120** until **1000'**. After, turn RIGHT to intercept **155** RDL NTL VOR until VUDUT for holding.

RMK: NIL.

DEPARTAMENTO DE CONTROLE DO ESPAÇO AÉREO



FAP	4.0	3.0	2.0	1.0	0.7	TDZ12	Ground Speed (KT)	090	110	130	150	170	190
1810	1441	1122	804	485	392	ALT	FPM	500	600	700	800	900	1000
1644	1275	956	638	319	226	(HGT)	FAF-MAPT	NIL					

STRAIGHT-IN	CAT	A	B	C	D	E
LNAV/VNAV	DA / (OCH)	392' / (226')				
	ALS/NO ALS/ RVR ALS (m)	NIL / 1200 / NIL				

CHANGES: FREQ, LAYOUT, MAIN OPR, PROC, VAR.

AIRAC AMDT 2107A1 15 JUL 21

USO EXCLUSIVO ACFT MILITARES / MILITARY ACFT ONLY

**SBNT_IAC_01H 1/1
IAC PAR Z RWY 12**